

## Product datasheet for **TA365328S**

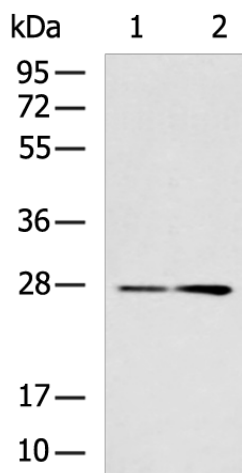
### **TWSG1 Rabbit Polyclonal Antibody**

#### **Product data:**

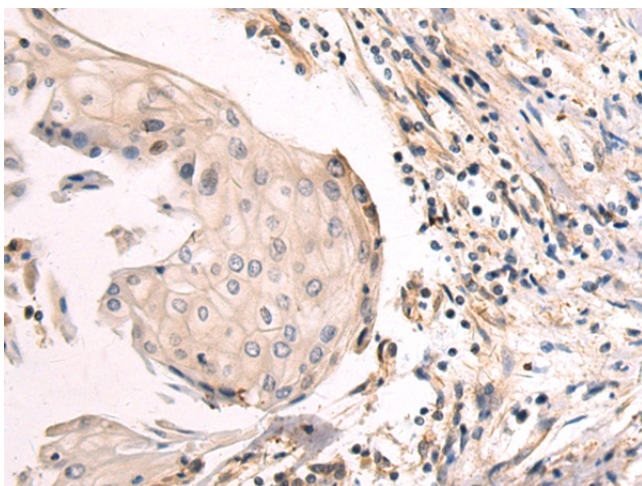
<b>Product Type:</b>	Primary Antibodies
<b>Applications:</b>	IHC, WB
<b>Recommended Dilution:</b>	WB: 200-1000 WB positive control: Mouse liver tissue, Rat liver tissue lysates IHC: 50-200 Positive control: Human esophagus cancer Predicted cell location: Secreted
<b>Reactivity:</b>	Human, Mouse, Rat
<b>Host:</b>	Rabbit
<b>Isotype:</b>	IgG
<b>Clonality:</b>	Polyclonal
<b>Immunogen:</b>	Fusion protein of human TWSG1
<b>Formulation:</b>	pH7.4 PBS, 0.05% NaN <sub>3</sub> , 40% Glycerol
<b>Purification:</b>	Antigen affinity purification
<b>Conjugation:</b>	Unconjugated
<b>Storage:</b>	Store at -20°C.
<b>Stability:</b>	1 year
<b>Predicted Protein Size:</b>	25 kDa
<b>Gene Name:</b>	twisted gastrulation BMP signaling modulator 1
<b>Database Link:</b>	<a href="#">Entrez Gene 57045 Human Q9GZX9</a>
<b>Background:</b>	May be involved in dorsoventral axis formation. Seems to antagonize BMP signaling by forming ternary complexes with CHR1 and BMPs, thereby preventing BMPs from binding to their receptors. In addition to the anti-BMP function, also has pro-BMP activity, partly mediated by cleavage and degradation of CHR1, which releases BMPs from ternary complexes. May be an important modulator of BMP-regulated cartilage development and chondrocyte differentiation. May play a role in thymocyte development.
<b>Synonyms:</b>	TSG



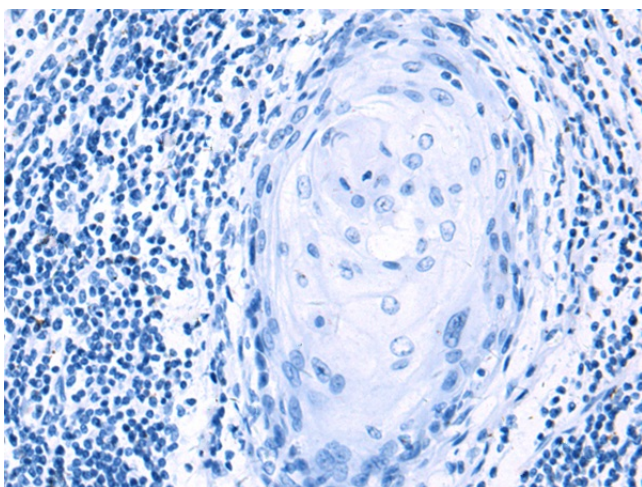
[View online »](#)

**Product images:**

Gel: 8%SDS-PAGE  
Lysate: 40  $\mu$ g  
Lane 1-2: Mouse liver tissue  
Rat liver tissue lysates  
Primary antibody: [TA365328] (TWSG1 Antibody)  
at dilution 1/400  
Secondary antibody: Goat anti rabbit IgG at  
1/5000 dilution  
Exposure time: 1 minute



Immunohistochemistry of paraffin-embedded  
Human esophagus cancer tissue using  
[TA365328] (TWSG1 Antibody) at dilution 1/80  
(Original magnification:  $\times 200$ )



Immunohistochemistry of paraffin-embedded Human esophagus cancer tissue using [TA365328] (TWSG1 Antibody) at dilution 1/80, treated with fusion protein. (Original magnification:  $\times 200$ )