

Product datasheet for **TA365328**

TWSG1 Rabbit Polyclonal Antibody

Product data:

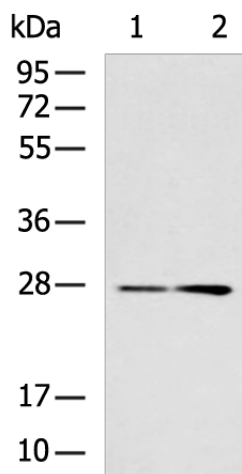
Product Type:	Primary Antibodies
Applications:	IHC, WB
Recommended Dilution:	WB: 200-1000 WB positive control: Mouse liver tissue, Rat liver tissue lysates IHC: 50-200 Positive control: Human esophagus cancer Predicted cell location: Secreted
Reactivity:	Human, Mouse, Rat
Host:	Rabbit
Isotype:	IgG
Clonality:	Polyclonal
Immunogen:	Fusion protein of human TWSG1
Formulation:	pH7.4 PBS, 0.05% NaN ₃ , 40% Glycerol
Concentration:	lot specific
Purification:	Antigen affinity purification
Conjugation:	Unconjugated
Storage:	Store at -20°C.
Stability:	1 year
Predicted Protein Size:	25 kDa
Gene Name:	twisted gastrulation BMP signaling modulator 1
Database Link:	Entrez Gene 57045 Human Q9GZX9
Background:	May be involved in dorsoventral axis formation. Seems to antagonize BMP signaling by forming ternary complexes with CHRDL1 and BMPs, thereby preventing BMPs from binding to their receptors. In addition to the anti-BMP function, also has pro-BMP activity, partly mediated by cleavage and degradation of CHRDL1, which releases BMPs from ternary complexes. May be an important modulator of BMP-regulated cartilage development and chondrocyte differentiation. May play a role in thymocyte development.



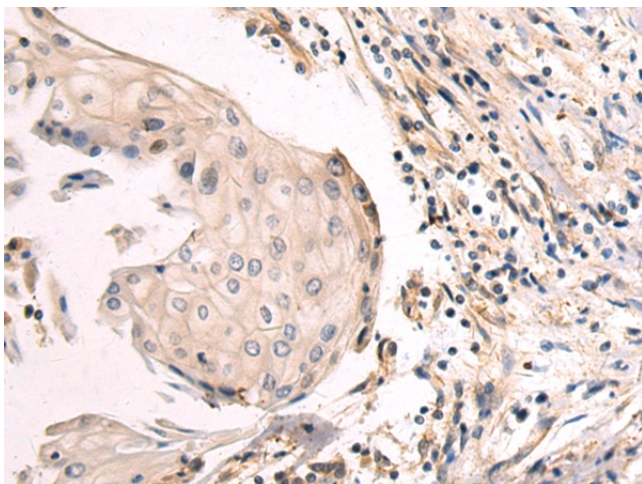
[View online »](#)

Synonyms: TSG

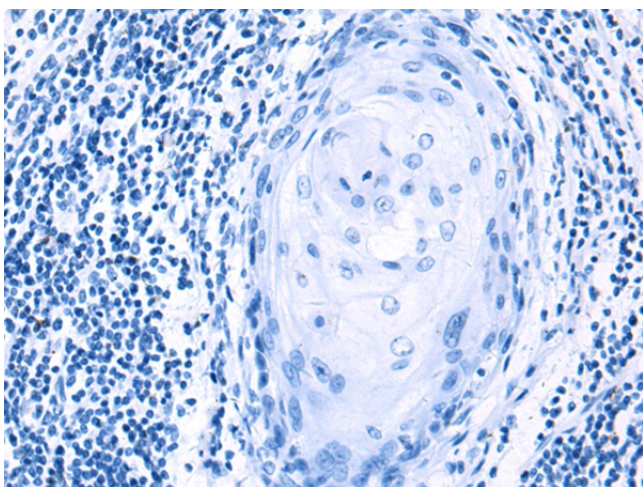
Product images:



Gel: 8%SDS-PAGE
Lysate: 40 μ g
Lane 1-2: Mouse liver tissue
Rat liver tissue lysates
Primary antibody: TA365328 (TWSG1 Antibody) at dilution 1/400
Secondary antibody: Goat anti rabbit IgG at 1/5000 dilution
Exposure time: 1 minute



Immunohistochemistry of paraffin-embedded Human esophagus cancer tissue using TA365328 (TWSG1 Antibody) at dilution 1/80 (Original magnification: $\times 200$)



Immunohistochemistry of paraffin-embedded Human esophagus cancer tissue using TA365328 (TWSG1 Antibody) at dilution 1/80, treated with fusion protein. (Original magnification: $\times 200$)