

Product datasheet for **TA365323**

NUDCD3 Rabbit Polyclonal Antibody

Product data:

Product Type:	Primary Antibodies
Applications:	IHC, WB
Recommended Dilution:	WB: 200-1000 WB positive control: Hela and 231 cell, Human cerebrum tissue lysates IHC: 25-100 Positive control: Human ovarian cancer Predicted cell location: Nucleus or Cytoplasm
Reactivity:	Human, Mouse
Host:	Rabbit
Isotype:	IgG
Clonality:	Polyclonal
Immunogen:	Fusion protein of human NUDCD3
Formulation:	pH7.4 PBS, 0.05% NaN ₃ , 40% Glycerol
Concentration:	lot specific
Purification:	Antigen affinity purification
Conjugation:	Unconjugated
Storage:	Store at -20°C.
Stability:	1 year
Predicted Protein Size:	41 kDa
Gene Name:	NudC domain containing 3
Database Link:	Entrez Gene 23386 Human Q8IVD9

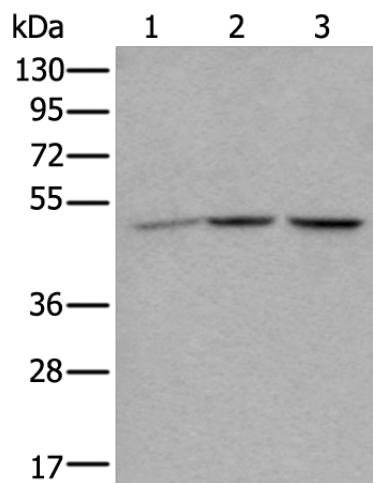
Background: The product of this gene functions to maintain the stability of dynein intermediate chain. Depletion of this gene product results in aggregation and degradation of dynein intermediate chain, mislocalization of the dynein complex from kinetochores, spindle microtubules, and spindle poles, and loss of gamma-tubulin from spindle poles. The protein localizes to the Golgi apparatus during interphase, and levels of the protein increase after the G1/S transition.



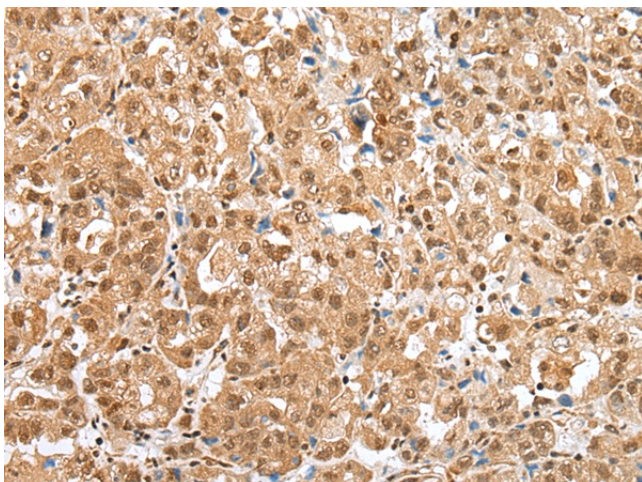
[View online »](#)

Synonyms: KIAA1068; NudCL

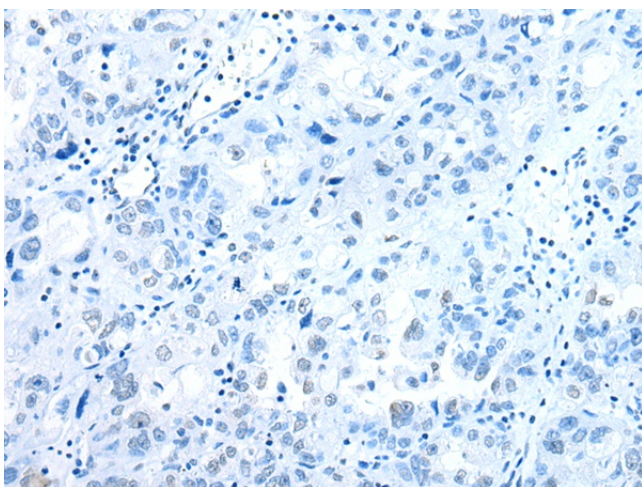
Product images:



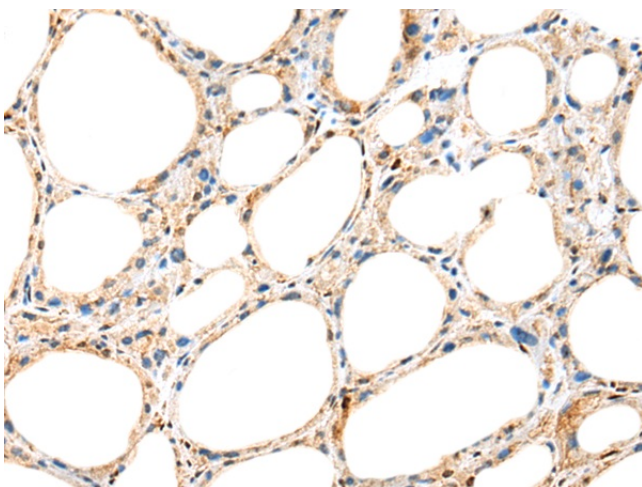
Gel: 8%SDS-PAGE
Lysate: 40 µg
Lane 1-3: HeLa and 231 cell
Human cerebrum tissue lysates
Primary antibody: TA365323 (NUDCD3 Antibody)
at dilution 1/350
Secondary antibody: Goat anti rabbit IgG at
1/8000 dilution
Exposure time: 1 second



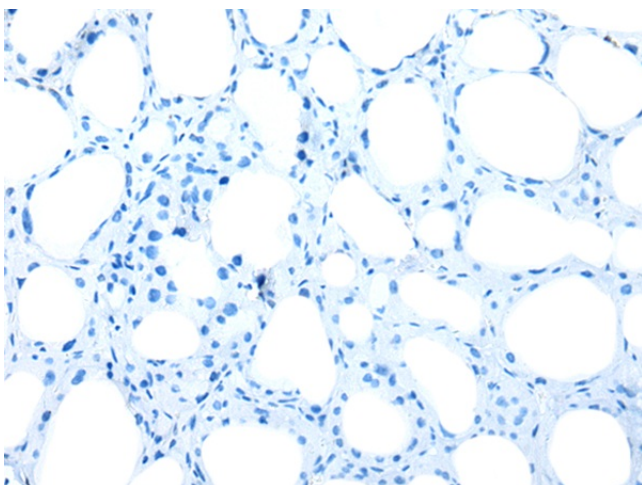
Immunohistochemistry of paraffin-embedded
Human ovarian cancer tissue using TA365323
(NUDCD3 Antibody) at dilution 1/30 (Original
magnification: x200)



Immunohistochemistry of paraffin-embedded Human ovarian cancer tissue using TA365323 (NUDCD3 Antibody) at dilution 1/30, treated with fusion protein. (Original magnification: ×200)



Immunohistochemistry of paraffin-embedded Human thyroid cancer tissue using TA365323 (NUDCD3 Antibody) at dilution 1/30 (Original magnification: ×200)



Immunohistochemistry of paraffin-embedded Human thyroid cancer tissue using TA365323 (NUDCD3 Antibody) at dilution 1/30, treated with fusion protein. (Original magnification: ×200)