

## Product datasheet for **TA365322**

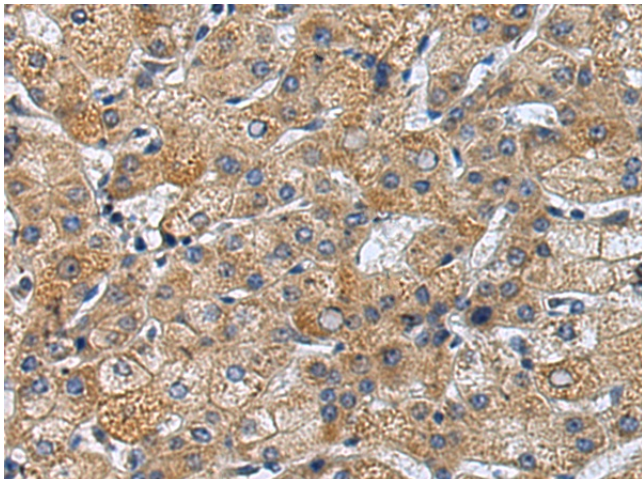
### TRAPPC4 Rabbit Polyclonal Antibody

#### Product data:

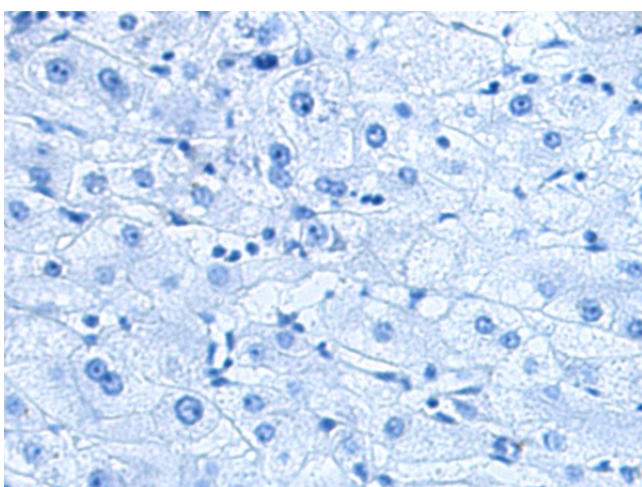
Product Type:	Primary Antibodies
Applications:	IHC
Recommended Dilution:	IHC: 100-300 Positive control: Human liver cancer Predicted cell location: Cytoplasm
Reactivity:	Human, Mouse, Rat
Host:	Rabbit
Isotype:	IgG
Clonality:	Polyclonal
Immunogen:	Fusion protein of human TRAPPC4
Formulation:	pH7.4 PBS, 0.05% NaN <sub>3</sub> , 40% Glycerol
Concentration:	lot specific
Purification:	Antigen affinity purification
Conjugation:	Unconjugated
Storage:	Store at -20°C.
Stability:	1 year
Gene Name:	trafficking protein particle complex 4
Database Link:	<a href="#">Entrez Gene 51399 Human Q9Y296</a>
Background:	May play a role in vesicular transport from endoplasmic reticulum to Golgi.
Synonyms:	CGI-104; HSPC172; PTD009; SBDN; SYNBINDIN; TRS23



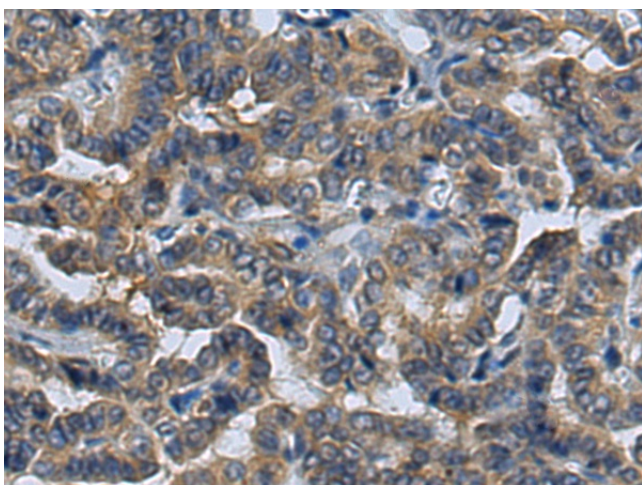
[View online »](#)

**Product images:**

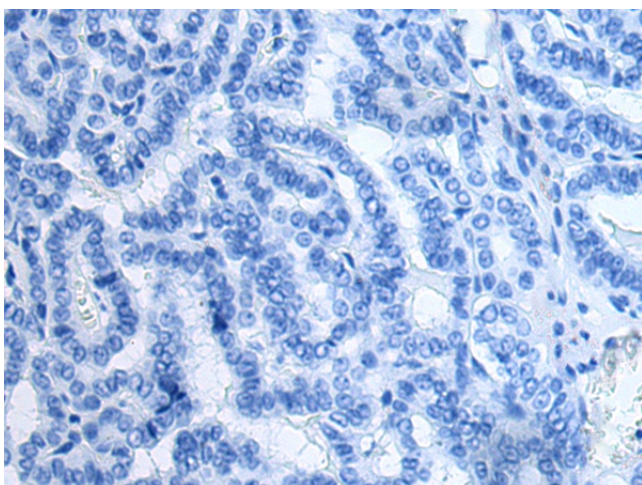
Immunohistochemistry of paraffin-embedded Human liver cancer tissue using TA365322 (TRAPPC4 Antibody) at dilution 1/120 (Original magnification:  $\times 200$ )



Immunohistochemistry of paraffin-embedded Human liver cancer tissue using TA365322 (TRAPPC4 Antibody) at dilution 1/120, treated with fusion protein. (Original magnification:  $\times 200$ )



Immunohistochemistry of paraffin-embedded Human thyroid cancer tissue using TA365322 (TRAPPC4 Antibody) at dilution 1/120 (Original magnification:  $\times 200$ )



Immunohistochemistry of paraffin-embedded Human thyroid cancer tissue using TA365322 (TRAPPC4 Antibody) at dilution 1/120, treated with fusion protein. (Original magnification:  $\times 200$ )