

## Product datasheet for **TA365321S**

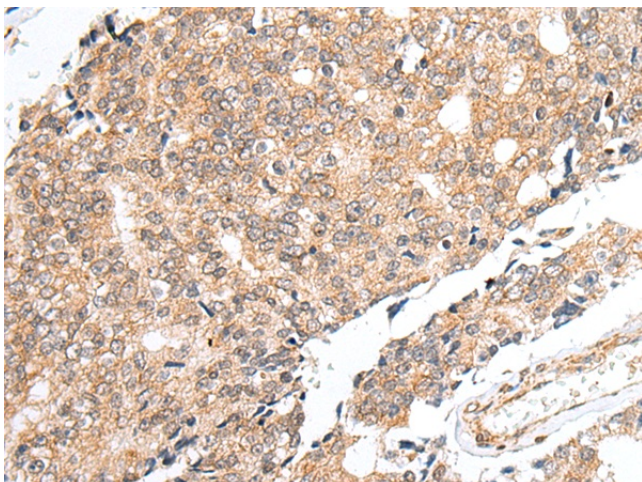
### PX19 (PRELID1) Rabbit Polyclonal Antibody

#### Product data:

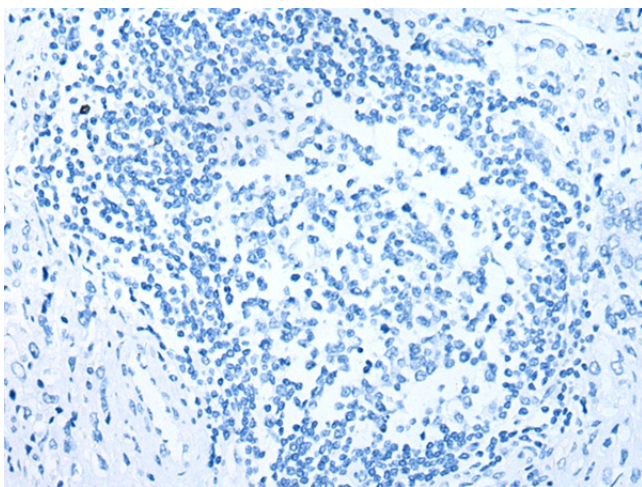
Product Type:	Primary Antibodies
Applications:	IHC
Recommended Dilution:	IHC: 30-150 Positive control: Human prostate cancer Predicted cell location: Cytoplasm
Reactivity:	Human, Mouse
Host:	Rabbit
Isotype:	IgG
Clonality:	Polyclonal
Immunogen:	Fusion protein of human PRELID1
Formulation:	pH7.4 PBS, 0.05% NaN <sub>3</sub> , 40% Glycerol
Purification:	Antigen affinity purification
Conjugation:	Unconjugated
Storage:	Store at -20°C.
Stability:	1 year
Gene Name:	PRELI domain containing 1
Database Link:	<a href="#">Entrez Gene 27166 Human Q9Y255</a>
Background:	This gene encodes a member of the late embryogenesis abundant motif-containing protein family. The encoded protein is localized to mitochondria and may function as a cytoprotectant by regulating cell death and differentiation. Alternative splicing results in multiple transcript variants encoding different isoforms. Several related pseudogenes have been identified.
Synonyms:	CGI-106; MGC87972; PRELI; PX19



[View online »](#)

**Product images:**

Immunohistochemistry of paraffin-embedded Human prostate cancer tissue using [TA365321] (PRELID1 Antibody) at dilution 1/40 (Original magnification:  $\times 200$ )



Immunohistochemistry of paraffin-embedded Human prostate cancer tissue using [TA365321] (PRELID1 Antibody) at dilution 1/40, treated with fusion protein. (Original magnification:  $\times 200$ )