

Product datasheet for **TA365319**

TINAGL1 Rabbit Polyclonal Antibody

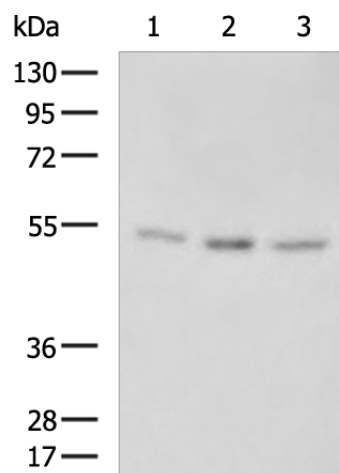
Product data:

Product Type:	Primary Antibodies
Applications:	IHC, WB
Recommended Dilution:	WB: 500-2000 WB positive control: Mouse heart tissue, Mouse liver tissue, Human left kidney cancer tissue lysates IHC: 100-200 Positive control: Human liver cancer Predicted cell location: Secreted
Reactivity:	Human, Mouse, Rat
Host:	Rabbit
Isotype:	IgG
Clonality:	Polyclonal
Immunogen:	Fusion protein of human TINAGL1
Formulation:	pH7.4 PBS, 0.05% NaN ₃ , 40% Glycerol
Concentration:	lot specific
Purification:	Antigen affinity purification
Conjugation:	Unconjugated
Storage:	Store at -20°C.
Stability:	1 year
Predicted Protein Size:	52 kDa
Gene Name:	tubulointerstitial nephritis antigen like 1
Database Link:	Entrez Gene 64129 Human Q9GZM7
Background:	The protein encoded by this gene is similar in sequence to tubulointerstitial nephritis antigen, a secreted glycoprotein that is recognized by antibodies in some types of immune-related tubulointerstitial nephritis. Three transcript variants encoding different isoforms have been found for this gene.
Synonyms:	ARG1; GIS5; LCN7; LIECG3; OLRG-2; OLRG2; P3ECSL; TIN-Ag-RP; TINAGL; TINAGRP

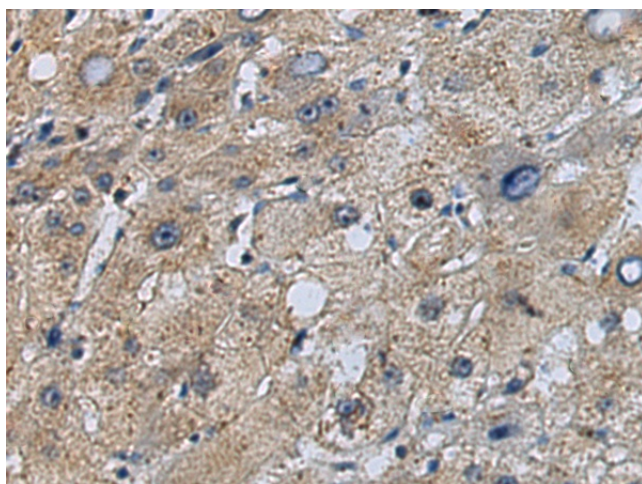


[View online »](#)

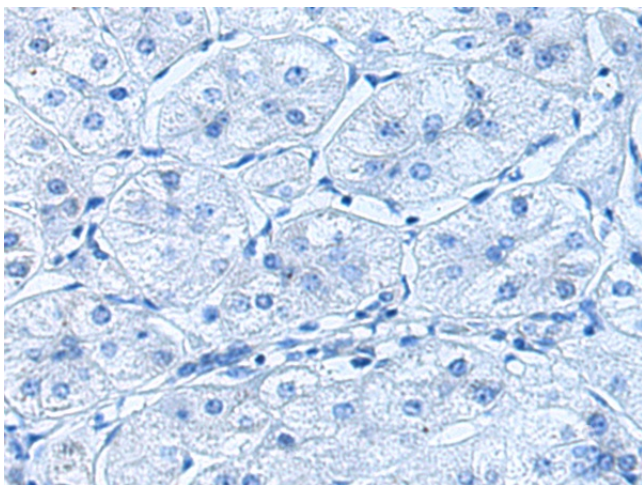
Product images:



Gel: 8%SDS-PAGE
Lysate: 40 μ g
Lane 1-3: Mouse heart tissue
Mouse liver tissue
Human left kidney cancer tissue lysates
Primary antibody: TA365319 (TINAGL1 Antibody)
at dilution 1/800
Secondary antibody: Goat anti rabbit IgG at
1/5000 dilution
Exposure time: 5 minutes



Immunohistochemistry of paraffin-embedded
Human liver cancer tissue using TA365319
(TINAGL1 Antibody) at dilution 1/120 (Original
magnification: \times 200)



Immunohistochemistry of paraffin-embedded Human liver cancer tissue using TA365319 (TINAGL1 Antibody) at dilution 1/120, treated with fusion protein. (Original magnification: $\times 200$)