

Product datasheet for **TA365317S**

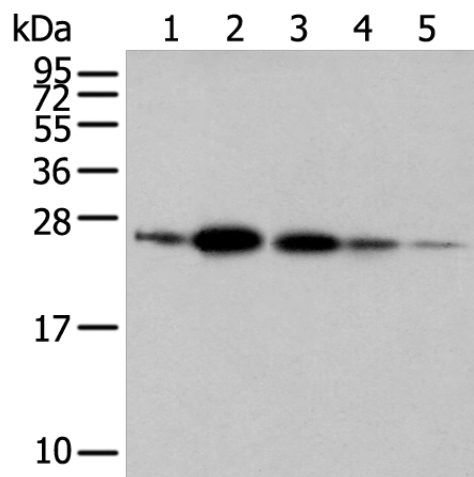
RAB11A Rabbit Polyclonal Antibody

Product data:

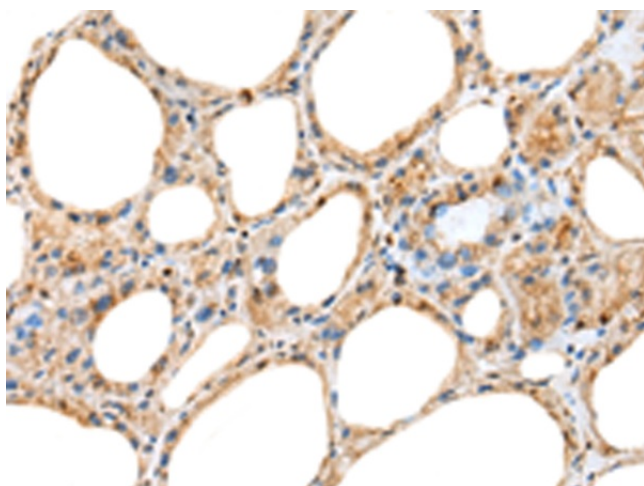
Product Type:	Primary Antibodies
Applications:	IHC, WB
Recommended Dilution:	WB: 500-2000 WB positive control: 293T□A549 and 231 cell□Human fetal brain tissue□Human placenta tissue IHC: 30-150 Positive control: Human thyroid cancer Predicted cell location: Cytoplasm
Reactivity:	Human, Mouse, Rat
Host:	Rabbit
Isotype:	IgG
Clonality:	Polyclonal
Immunogen:	Full length fusion protein
Formulation:	pH7.4 PBS, 0.05% NaN ₃ , 40% Glycerol
Purification:	Antigen affinity purification
Conjugation:	Unconjugated
Storage:	Store at -20°C.
Stability:	1 year
Predicted Protein Size:	24 kDa
Gene Name:	RAB11A, member RAS oncogene family
Database Link:	Entrez Gene 8766 Human P62491
Background:	The protein encoded by this gene belongs to the Rab family of the small GTPase superfamily. It is associated with both constitutive and regulated secretory pathways, and may be involved in protein transport. Two transcript variants encoding different isoforms have been found for this gene.
Synonyms:	MGC1490; Rab-11; RAB11; YL8



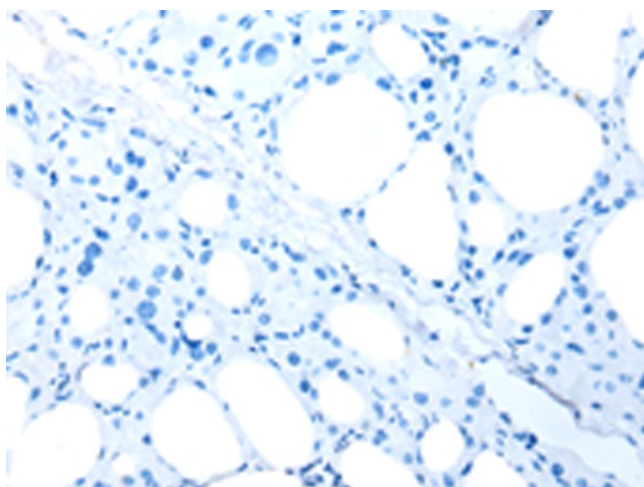
[View online »](#)

Product images:


Gel: 12%SDS-PAGE
 Lysate: 40 µg
 Lane 1-5: 293T
 A549 and 231 cell
 Human fetal brain tissue
 Human placenta tissue
 Primary antibody: [TA365317] (RAB11A Antibody)
 at dilution 1/500
 Secondary antibody: Goat anti rabbit IgG at
 1/8000 dilution
 Exposure time: 5 seconds



Immunohistochemistry of paraffin-embedded
 Human thyroid cancer tissue using [TA365317]
 (RAB11A Antibody) at dilution 1/45 (Original
 magnification: ×200)



Immunohistochemistry of paraffin-embedded
 Human thyroid cancer tissue using [TA365317]
 (RAB11A Antibody) at dilution 1/45, treated with
 fusion protein. (Original magnification: ×200)