

## Product datasheet for **TA365316**

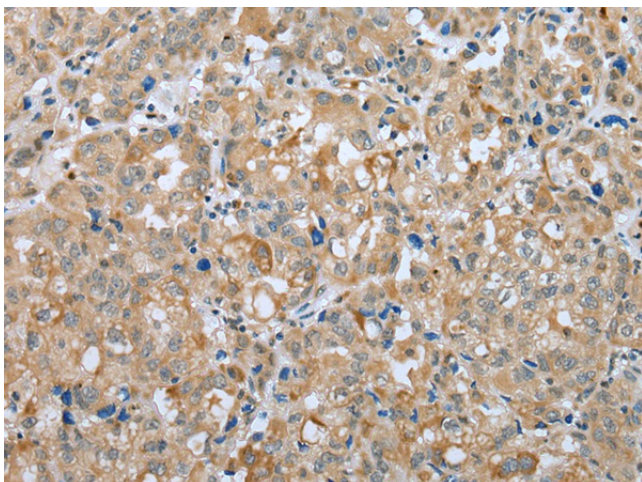
### PLA2G4D Rabbit Polyclonal Antibody

#### Product data:

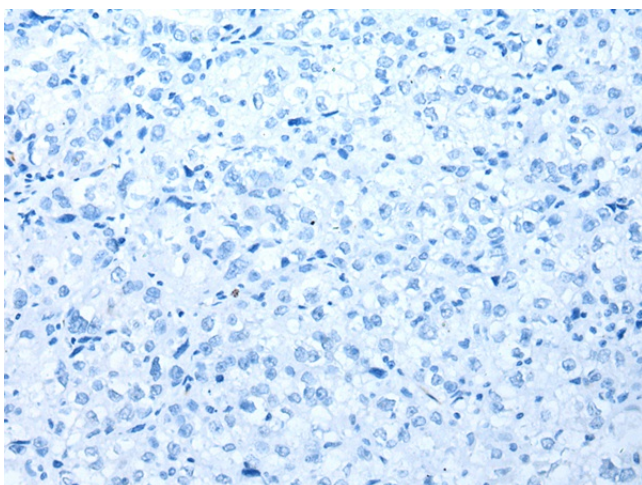
Product Type:	Primary Antibodies
Applications:	IHC
Recommended Dilution:	IHC: 25-100 Positive control: Human ovarian cancer Predicted cell location: Cytoplasm
Reactivity:	Human
Host:	Rabbit
Isotype:	IgG
Clonality:	Polyclonal
Immunogen:	Fusion protein of human PLA2G4D
Formulation:	pH7.4 PBS, 0.05% NaN <sub>3</sub> , 40% Glycerol
Concentration:	lot specific
Purification:	Antigen affinity purification
Conjugation:	Unconjugated
Storage:	Store at -20°C.
Stability:	1 year
Gene Name:	phospholipase A2 group IVD
Database Link:	<a href="#">Entrez Gene 283748 Human Q86XP0</a>
Background:	The phospholipase A2 enzyme family, including PLA2G4D, catalyze the hydrolysis of glycerophospholipids at the sn-2 position and then liberate free fatty acids and lysophospholipids (Chiba et al., 2004 [PubMed 14709560]).
Synonyms:	cPLA2-delta; cPLA2delta



[View online »](#)

**Product images:**

Immunohistochemistry of paraffin-embedded Human ovarian cancer tissue using TA365316 (PLA2G4D Antibody) at dilution 1/25 (Original magnification:  $\times 200$ )



Immunohistochemistry of paraffin-embedded Human ovarian cancer tissue using TA365316 (PLA2G4D Antibody) at dilution 1/25, treated with fusion protein. (Original magnification:  $\times 200$ )