

Product datasheet for **TA365311**

RAB39B Rabbit Polyclonal Antibody

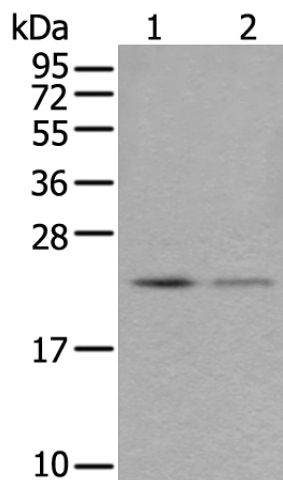
Product data:

Product Type:	Primary Antibodies
Applications:	IHC, WB
Recommended Dilution:	WB: 200-1000 WB positive control: Human cerebrum tissue and A172 cell lysates IHC: 25-100 Positive control: Human prostate cancer Predicted cell location: Cytoplasm
Reactivity:	Human, Mouse
Host:	Rabbit
Isotype:	IgG
Clonality:	Polyclonal
Immunogen:	Full length fusion protein
Formulation:	pH7.4 PBS, 0.05% NaN ₃ , 40% Glycerol
Concentration:	lot specific
Purification:	Antigen affinity purification
Conjugation:	Unconjugated
Storage:	Store at -20°C.
Stability:	1 year
Predicted Protein Size:	25 kDa
Gene Name:	RAB39B, member RAS oncogene family
Database Link:	Entrez Gene 116442 Human Q96DA2
Background:	This gene encodes a member of the Rab family of proteins. Rab proteins are small GTPases that are involved in vesicular trafficking. Mutations in this gene are associated with X-linked mental retardation.
Synonyms:	RAB39B



[View online »](#)

Product images:



Gel: 12%SDS-PAGE

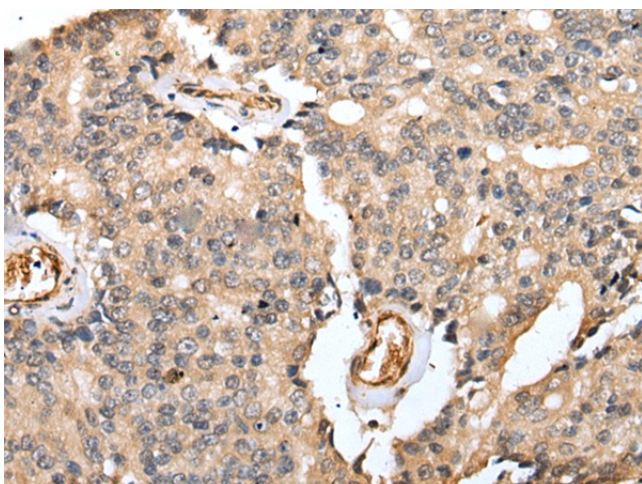
Lysate: 40 μ g

Lane 1-2: Human cerebrum tissue and A172 cell lysates

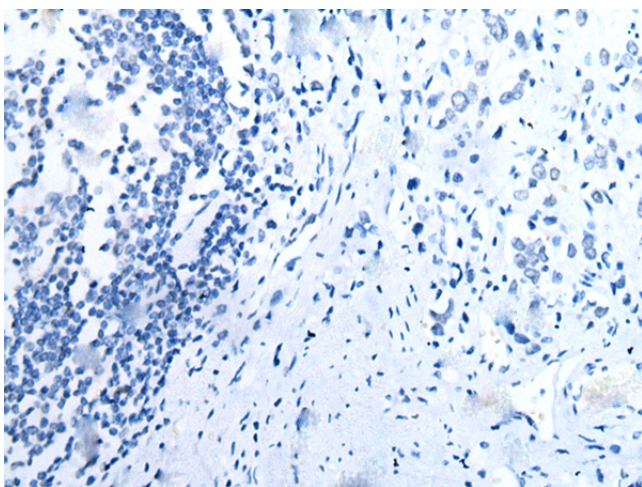
Primary antibody: TA365311 (RAB39B Antibody) at dilution 1/250

Secondary antibody: Goat anti rabbit IgG at 1/8000 dilution

Exposure time: 15 seconds



Immunohistochemistry of paraffin-embedded Human prostate cancer tissue using TA365311 (RAB39B Antibody) at dilution 1/25 (Original magnification: $\times 200$)



Immunohistochemistry of paraffin-embedded Human prostate cancer tissue using TA365311 (RAB39B Antibody) at dilution 1/25, treated with fusion protein. (Original magnification: $\times 200$)