

Product datasheet for **TA365310S**

LYPD4 Rabbit Polyclonal Antibody

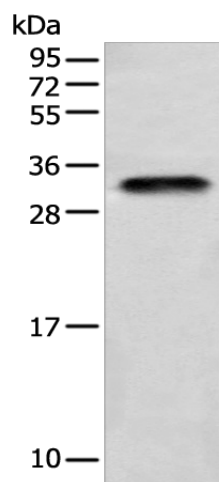
Product data:

Product Type:	Primary Antibodies
Applications:	IHC, WB
Recommended Dilution:	WB: 500-2000 WB positive control: Human testis tissue IHC: 25-100 Positive control: Human lung cancer Predicted cell location: Cell membrane
Reactivity:	Human
Host:	Rabbit
Isotype:	IgG
Clonality:	Polyclonal
Immunogen:	Full length fusion protein
Formulation:	pH7.4 PBS, 0.05% NaN ₃ , 40% Glycerol
Purification:	Antigen affinity purification
Conjugation:	Unconjugated
Storage:	Store at -20°C.
Stability:	1 year
Predicted Protein Size:	27 kDa
Gene Name:	LY6/PLAUR domain containing 4
Database Link:	Entrez Gene 147719 Human Q6UWN0
Background:	The specific function of LYPD4 is not yet known.
Synonyms:	MGC42718; SMR

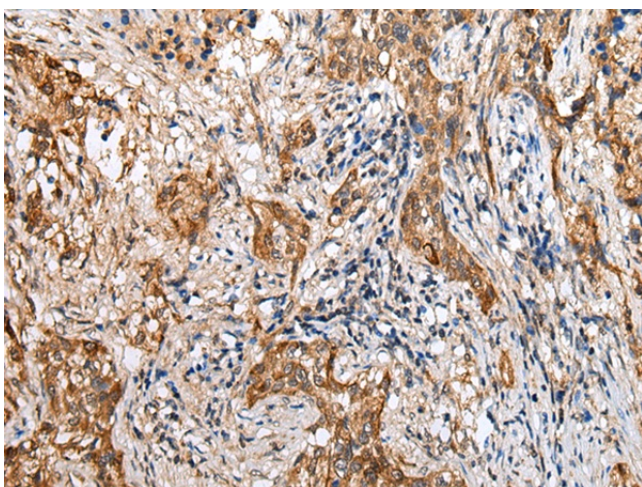


[View online »](#)

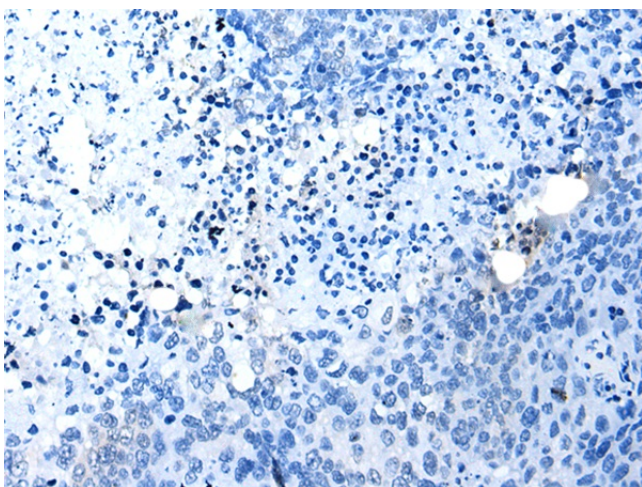
Product images:



Gel: 12%SDS-PAGE
 Lysate: 40 µg
 Lane: Human testis tissue
 Primary antibody: [TA365310] (LYPD4 Antibody)
 at dilution 1/400
 Secondary antibody: Goat anti rabbit IgG at
 1/8000 dilution
 Exposure time: 1 minute



Immunohistochemistry of paraffin-embedded
 Human lung cancer tissue using [TA365310]
 (LYPD4 Antibody) at dilution 1/25 (Original
 magnification: ×200)



Immunohistochemistry of paraffin-embedded Human lung cancer tissue using [TA365310] (LYPD4 Antibody) at dilution 1/25, treated with fusion protein. (Original magnification: ×200)