

Product datasheet for **TA365305**

CSRP3 Rabbit Polyclonal Antibody

Product data:

Product Type:	Primary Antibodies
Applications:	IHC, WB
Recommended Dilution:	WB: 200-1000 WB positive control: Mouse heart tissue,Rat heart tissue and Human heart tissue lysates IHC: 25-100 Positive control: Human ovarian cancer Predicted cell location: Nucleus
Reactivity:	Human, Mouse, Rat
Host:	Rabbit
Isotype:	IgG
Clonality:	Polyclonal
Immunogen:	Full length fusion protein
Formulation:	pH7.4 PBS, 0.05% NaN ₃ , 40% Glycerol
Concentration:	lot specific
Purification:	Antigen affinity purification
Conjugation:	Unconjugated
Storage:	Store at -20°C.
Stability:	1 year
Predicted Protein Size:	21 kDa
Gene Name:	cysteine and glycine rich protein 3
Database Link:	Entrez Gene 8048 Human P50461



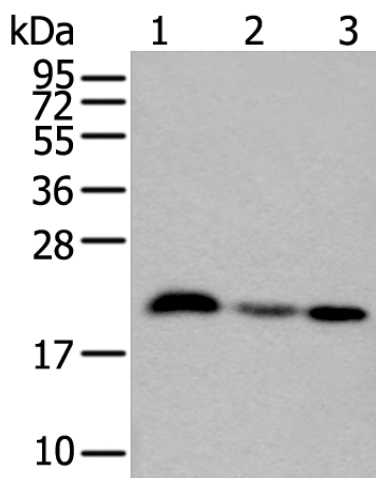
[View online »](#)

Background:

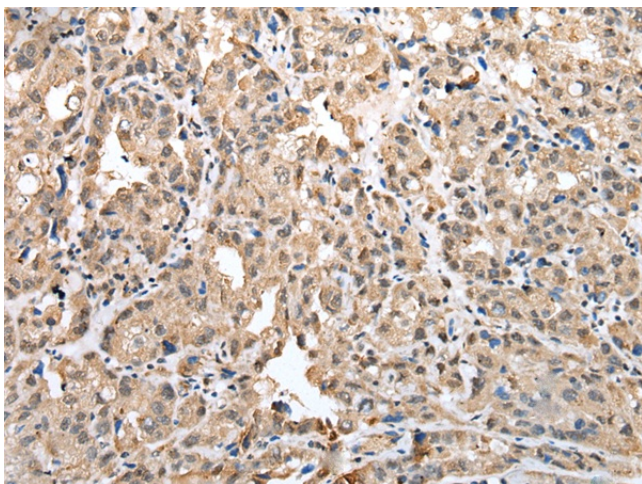
This gene encodes a member of the CSRP family of LIM domain proteins, which may be involved in regulatory processes important for development and cellular differentiation. The LIM/double zinc-finger motif found in this protein is found in a group of proteins with critical functions in gene regulation, cell growth, and somatic differentiation. Mutations in this gene are thought to cause heritable forms of hypertrophic cardiomyopathy (HCM) and dilated cardiomyopathy (DCM) in humans. Alternatively spliced transcript variants with different 5' UTR, but encoding the same protein, have been found for this gene.

Synonyms:

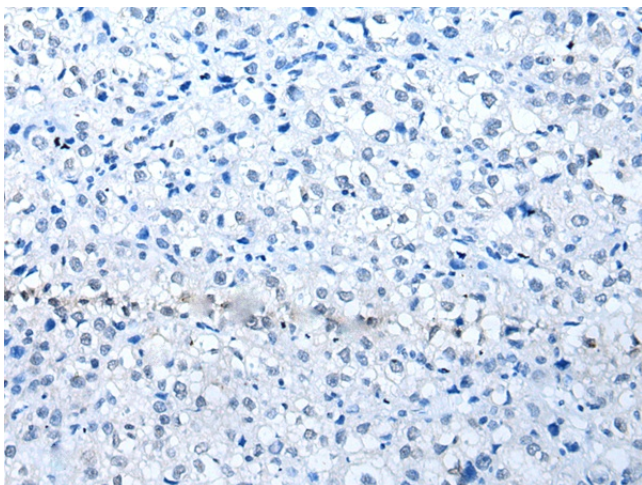
CLP; CMD1M; CMH12; CRP3; LMO4; MGC14488; MGC61993; MLP

Product images:


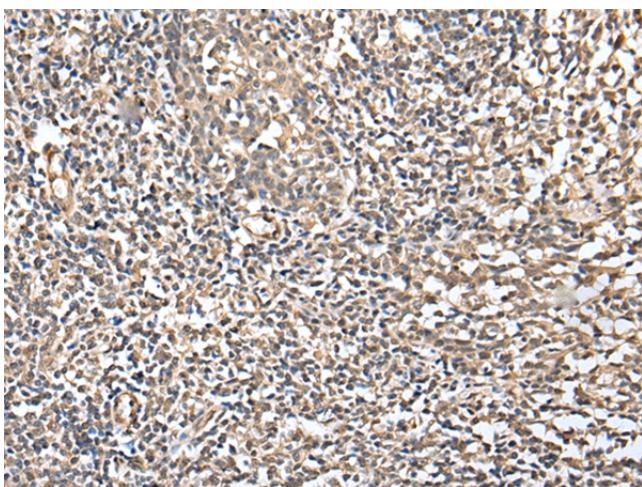
Gel: 12%SDS-PAGE
 Lysate: 40 µg
 Lane 1-3: Mouse heart tissue
 Rat heart tissue and Human heart tissue lysates
 Primary antibody: TA365305 (CSRP3 Antibody) at dilution 1/200
 Secondary antibody: Goat anti rabbit IgG at 1/8000 dilution
 Exposure time: 5 seconds



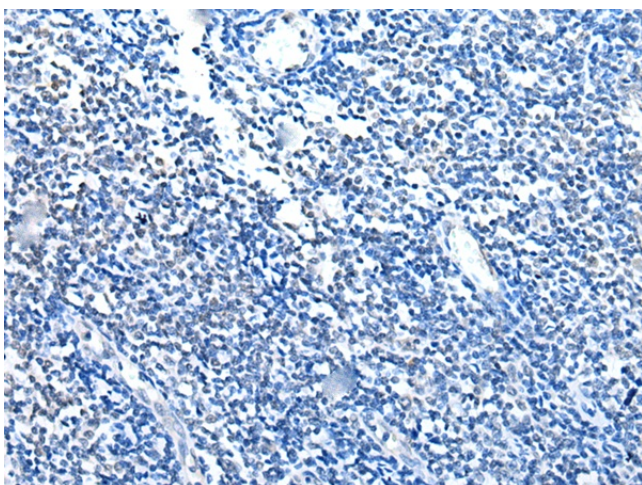
Immunohistochemistry of paraffin-embedded Human ovarian cancer tissue using TA365305 (CSRP3 Antibody) at dilution 1/25 (Original magnification: ×200)



Immunohistochemistry of paraffin-embedded Human ovarian cancer tissue using TA365305 (CSR3 Antibody) at dilution 1/25, treated with fusion protein. (Original magnification: ×200)



Immunohistochemistry of paraffin-embedded Human tonsil tissue using TA365305 (CSR3 Antibody) at dilution 1/25 (Original magnification: ×200)



Immunohistochemistry of paraffin-embedded Human tonsil tissue using TA365305 (CSR3 Antibody) at dilution 1/25, treated with fusion protein. (Original magnification: ×200)