

Product datasheet for **TA365297**

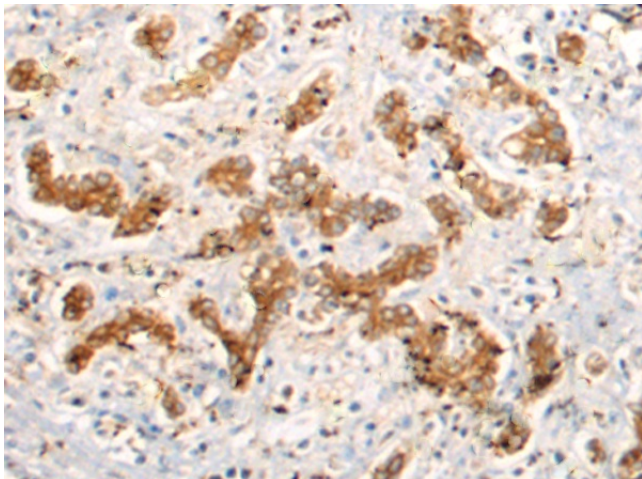
LSAMP Rabbit Polyclonal Antibody

Product data:

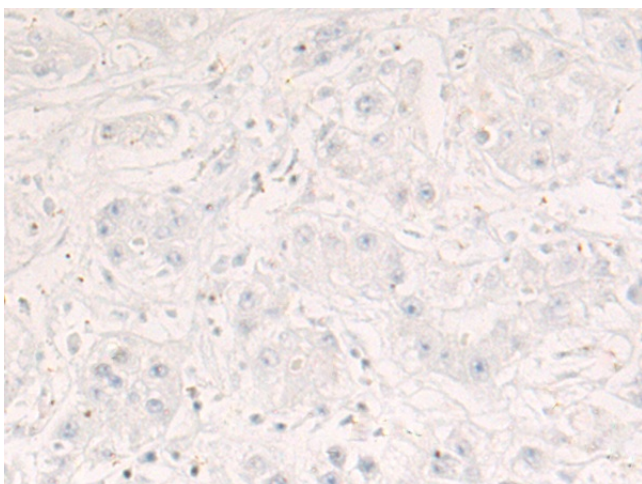
Product Type:	Primary Antibodies
Applications:	IHC
Recommended Dilution:	IHC: 50-200 Positive control: Human liver cancer Predicted cell location: Cell membrane
Reactivity:	Human, Mouse, Rat
Host:	Rabbit
Isotype:	IgG
Clonality:	Polyclonal
Immunogen:	Fusion protein of human LSAMP
Formulation:	pH7.4 PBS, 0.05% NaN ₃ , 40% Glycerol
Concentration:	lot specific
Purification:	Antigen affinity purification
Conjugation:	Unconjugated
Storage:	Store at -20°C.
Stability:	1 year
Gene Name:	limbic system-associated membrane protein
Database Link:	Entrez Gene 4045 Human Q13449
Background:	This gene encodes a member of the immunoglobulin LAMP, OBCAM and neurotrimin (IgLON) family of proteins. The encoded preproprotein is proteolytically processed to generate a neuronal surface glycoprotein. This protein may act as a selective homophilic adhesion molecule during axon guidance and neuronal growth in the developing limbic system. The encoded protein may also function as a tumor suppressor and may play a role in neuropsychiatric disorders. Alternative splicing results in multiple transcript variants, at least one of which encodes a preproprotein that is proteolytically processed.
Synonyms:	FLJ34254; FLJ35396; FLJ37216; FLJ54658; IGLON3; LAMP



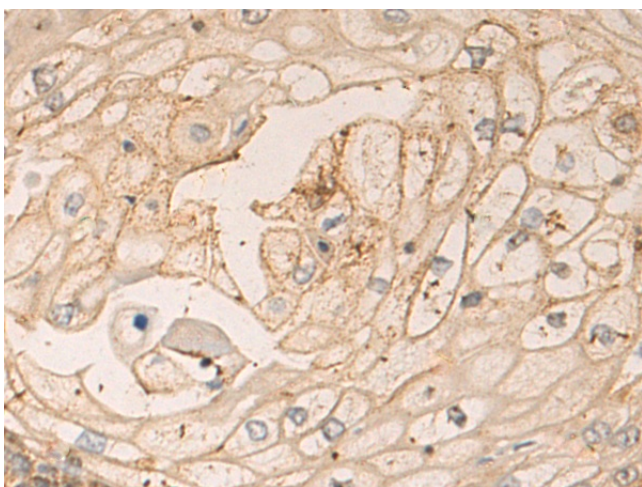
[View online »](#)

Product images:

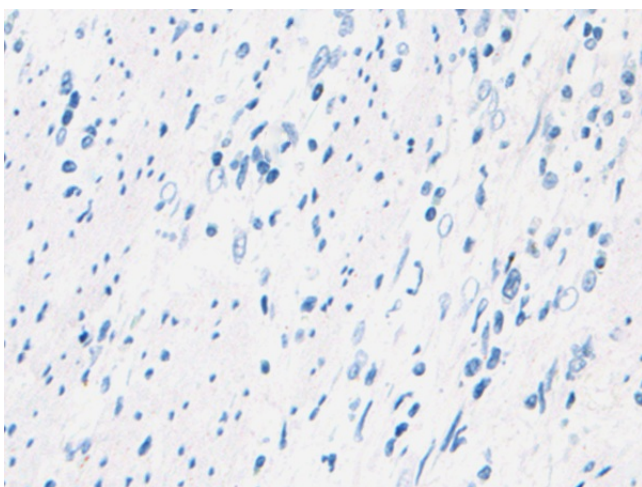
Immunohistochemistry of paraffin-embedded Human liver cancer tissue using TA365297 (LSAMP Antibody) at dilution 1/50 (Original magnification: ×200)



Immunohistochemistry of paraffin-embedded Human liver cancer tissue using TA365297 (LSAMP Antibody) at dilution 1/50, treated with fusion protein. (Original magnification: ×200)



Immunohistochemistry of paraffin-embedded Human esophagus cancer tissue using TA365297 (LSAMP Antibody) at dilution 1/50 (Original magnification: ×200)



Immunohistochemistry of paraffin-embedded Human esophagus cancer tissue using TA365297 (LSAMP Antibody) at dilution 1/50, treated with fusion protein. (Original magnification: ×200)