

## Product datasheet for **TA365296**

### CD1 (CD1D) Rabbit Polyclonal Antibody

#### Product data:

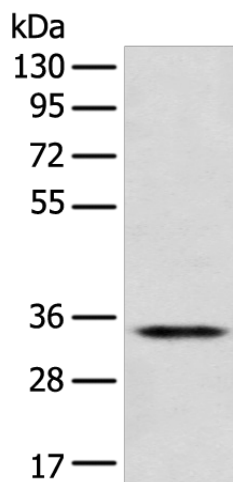
Product Type:	Primary Antibodies
Applications:	IHC, WB
Recommended Dilution:	WB: 500-2000 WB positive control: Jurkat cell IHC: 25-100 Positive control: Human tonsil Predicted cell location: Cell membrane
Reactivity:	Human
Host:	Rabbit
Isotype:	IgG
Clonality:	Polyclonal
Immunogen:	Fusion protein of human CD1D
Formulation:	pH7.4 PBS, 0.05% NaN <sub>3</sub> , 40% Glycerol
Concentration:	lot specific
Purification:	Antigen affinity purification
Conjugation:	Unconjugated
Storage:	Store at -20°C.
Stability:	1 year
Predicted Protein Size:	38 kDa
Gene Name:	CD1d molecule
Database Link:	<a href="#">Entrez Gene 912 Human P15813</a>

**Background:** This gene encodes a divergent member of the CD1 family of transmembrane glycoproteins, which are structurally related to the major histocompatibility complex (MHC) proteins and form heterodimers with beta-2-microglobulin. The CD1 proteins mediate the presentation of primarily lipid and glycolipid antigens of self or microbial origin to T cells. The human genome contains five CD1 family genes organized in a cluster on chromosome 1.

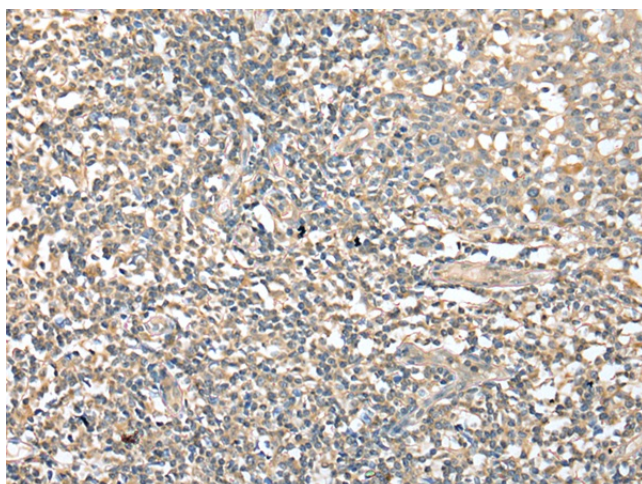
**Synonyms:** CD1A; MGC34622; R3; R3G1



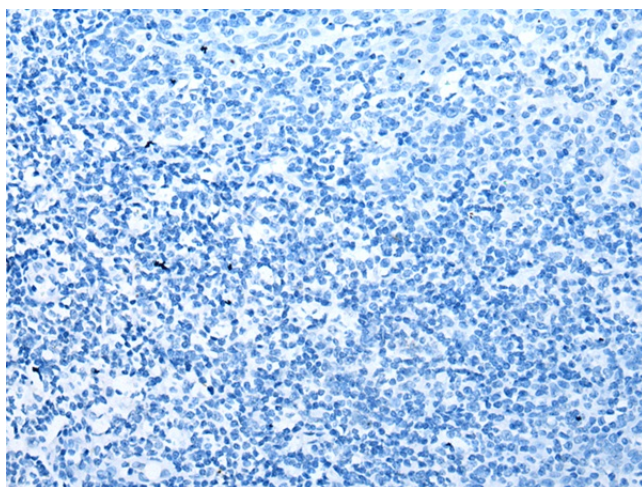
[View online »](#)

**Product images:**

Gel: 8%SDS-PAGE  
Lysate: 40 µg  
Lane: Jurkat cell  
Primary antibody: TA365296 (CD1D Antibody) at dilution 1/300  
Secondary antibody: Goat anti rabbit IgG at 1/8000 dilution  
Exposure time: 30 seconds



Immunohistochemistry of paraffin-embedded Human tonsil tissue using TA365296 (CD1D Antibody) at dilution 1/25 (Original magnification: ×200)



Immunohistochemistry of paraffin-embedded Human tonsil tissue using TA365296 (CD1D Antibody) at dilution 1/25, treated with fusion protein. (Original magnification:  $\times 200$ )