

Product datasheet for **TA365292**

SEP15 Rabbit Polyclonal Antibody

Product data:

Product Type:	Primary Antibodies
Applications:	WB
Recommended Dilution:	WB: 1000-5000 WB positive control: Rat liver tissue lysate
Reactivity:	Human, Mouse, Rat
Host:	Rabbit
Isotype:	IgG
Clonality:	Polyclonal
Immunogen:	Fusion protein of human SELENOF
Formulation:	pH7.4 PBS, 0.05% NaN ₃ , 40% Glycerol
Concentration:	lot specific
Purification:	Antigen affinity purification
Conjugation:	Unconjugated
Storage:	Store at -20°C.
Stability:	1 year
Predicted Protein Size:	18 kDa
Gene Name:	selenoprotein F
Database Link:	Entrez Gene 9403 Human O60613



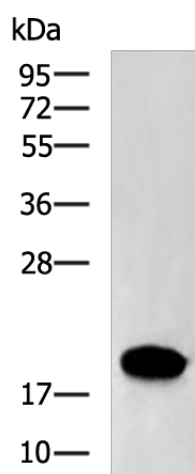
[View online »](#)

Background:

The protein encoded by this gene belongs to the SEP15/selenoprotein M family. The exact function of this protein is not known; however, it has been found to associate with UDP-glucose:glycoprotein glucosyltransferase (UGTR), an endoplasmic reticulum(ER)-resident protein, which is involved in the quality control of protein folding. The association with UGTR retains this protein in the ER, where it may play a role in protein folding. It has also been suggested to have a role in cancer etiology. This protein is a selenoprotein, containing the rare amino acid selenocysteine (Sec). Sec is encoded by the UGA codon, which normally signals translation termination. The 3' UTRs of selenoprotein mRNAs contain a conserved stem-loop structure, designated the Sec insertion sequence (SECIS) element, that is necessary for the recognition of UGA as a Sec codon, rather than as a stop signal. Alternatively spliced transcript variants have been found for this gene.

Synonyms:

SEP15

Product images:

Gel: 12%SDS-PAGE
Lysate: 40 µg
Lane: Rat liver tissue lysate
Primary antibody: TA365292 (SELENOF Antibody)
at dilution 1/1000
Secondary antibody: Goat anti rabbit IgG at
1/5000 dilution
Exposure time: 1 minute