

## Product datasheet for **TA365290S**

### DHR SX Rabbit Polyclonal Antibody

#### Product data:

Product Type:	Primary Antibodies
Applications:	IHC, WB
Recommended Dilution:	WB: 500-2000 WB positive control: HepG2 cell□Hela cell and A549 cell IHC: 25-100 Positive control: Human liver cancer Predicted cell location: Cytoplasm
Reactivity:	Human
Host:	Rabbit
Isotype:	IgG
Clonality:	Polyclonal
Immunogen:	Fusion protein of human DHR SX
Formulation:	pH7.4 PBS, 0.05% NaN <sub>3</sub> , 40% Glycerol
Purification:	Antigen affinity purification
Conjugation:	Unconjugated
Storage:	Store at -20°C.
Stability:	1 year
Predicted Protein Size:	36 kDa
Gene Name:	dehydrogenase/reductase X-linked
Database Link:	<a href="#">Entrez Gene 207063 Human Q8N5I4</a>

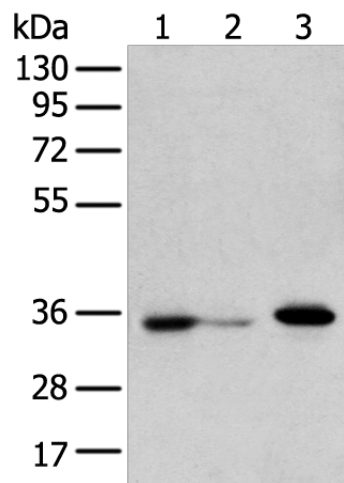
**Background:** DHR SX (dehydrogenase/reductase SDR family member on chromosome X) is a 330 amino acid protein belonging to the short-chain dehydrogenases/reductases (SDR) family. Widely expressed, DHR SX is an oxidoreductase that contains a coenzyme binding site and a substrate binding site, indicating a possible role in cellular metabolism. The gene that encodes DHR SX is located in the pseudoautosomal region 1 (PAR1) of X and Y chromosomes. The X and Y chromosomes are the human sex chromosomes. Chromosome X consists of about 153 million base pairs and nearly 1,000 genes.



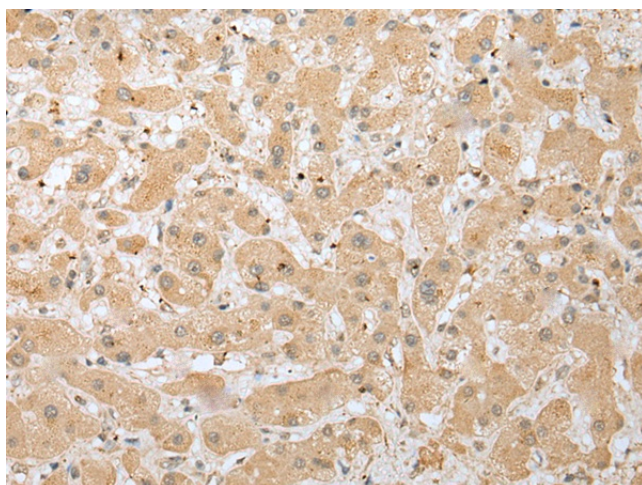
[View online »](#)

Synonyms: CXorf11; DHR55X; DHR55Y; DHR5XY; DHR5Y; SDR46C1

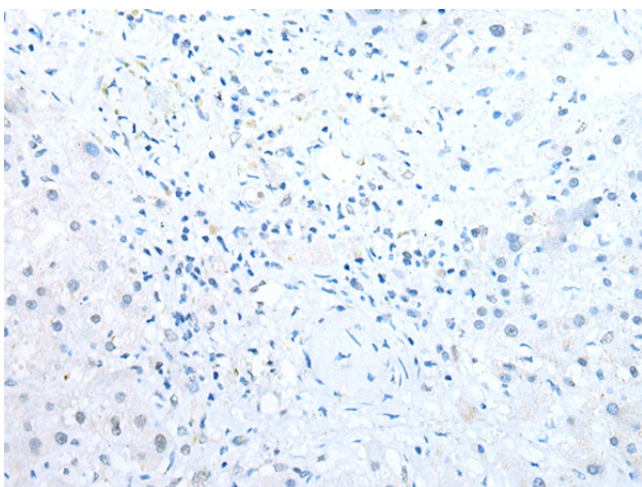
**Product images:**



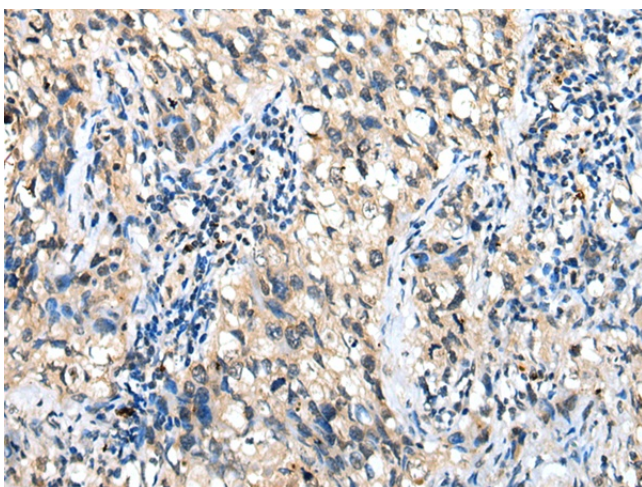
Gel: 8%SDS-PAGE  
 Lysate: 40 µg  
 Lane 1-3: HepG2 cell  
 Hela cell and A549 cell  
 Primary antibody: [TA365290] (DHR SX Antibody)  
 at dilution 1/350  
 Secondary antibody: Goat anti rabbit IgG at  
 1/8000 dilution  
 Exposure time: 10 seconds



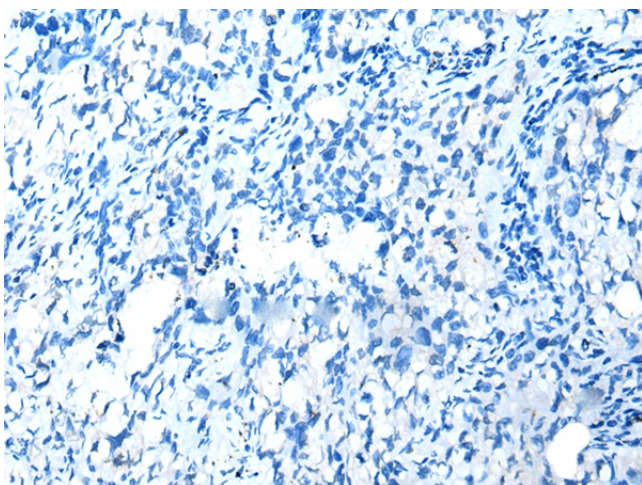
Immunohistochemistry of paraffin-embedded  
 Human liver cancer tissue using [TA365290]  
 (DHR SX Antibody) at dilution 1/30 (Original  
 magnification: x200)



Immunohistochemistry of paraffin-embedded Human liver cancer tissue using [TA365290] (DHRSX Antibody) at dilution 1/30, treated with fusion protein. (Original magnification:  $\times 200$ )



Immunohistochemistry of paraffin-embedded Human lung cancer tissue using [TA365290] (DHRSX Antibody) at dilution 1/30 (Original magnification:  $\times 200$ )



Immunohistochemistry of paraffin-embedded Human lung cancer tissue using [TA365290] (DHRSX Antibody) at dilution 1/30, treated with fusion protein. (Original magnification:  $\times 200$ )