

Product datasheet for **TA365284**

NPL Rabbit Polyclonal Antibody

Product data:

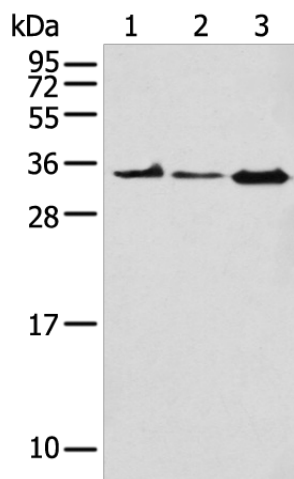
Product Type:	Primary Antibodies
Applications:	IHC, WB
Recommended Dilution:	WB: 200-1000 WB positive control: HEPG2/PC-3 and Raji cell IHC: 25-100 Positive control: Human liver cancer Predicted cell location: Cytoplasm
Reactivity:	Human, Mouse, Rat
Host:	Rabbit
Isotype:	IgG
Clonality:	Polyclonal
Immunogen:	Fusion protein of human NPL
Formulation:	pH7.4 PBS, 0.05% NaN ₃ , 40% Glycerol
Concentration:	lot specific
Purification:	Antigen affinity purification
Conjugation:	Unconjugated
Storage:	Store at -20°C.
Stability:	1 year
Predicted Protein Size:	35 kDa
Gene Name:	N-acetylneuraminase pyruvate lyase (dihydrodipicolinate synthase)
Database Link:	Entrez Gene 80896 Human Q9BXD5
Background:	This gene encodes a member of the N-acetylneuraminase lyase sub-family of (beta/alpha)(8)-barrel enzymes. N-acetylneuraminase lyases regulate cellular concentrations of N-acetylneuraminic acid (sialic acid) by mediating the reversible conversion of sialic acid into N-acetylmannosamine and pyruvate. A pseudogene of this gene is located on the short arm of chromosome 2. Alternatively spliced transcript variants encoding multiple isoforms have been observed for this gene.



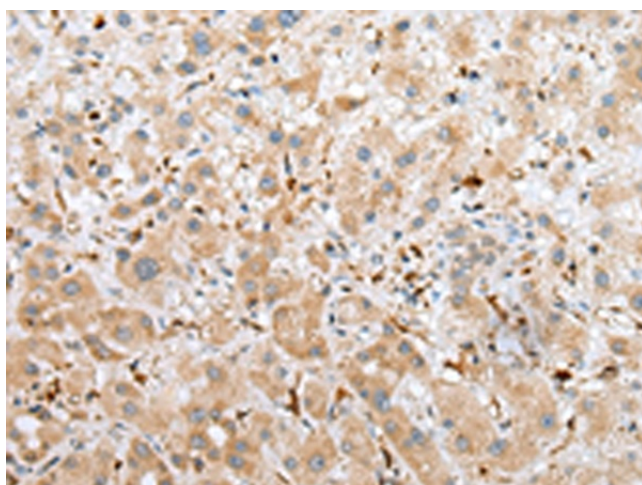
[View online »](#)

Synonyms: C1orf13; c112; DHGPS1; MGC61869; MGC149582; NALase; NPL1; OTTHUMP00000033259

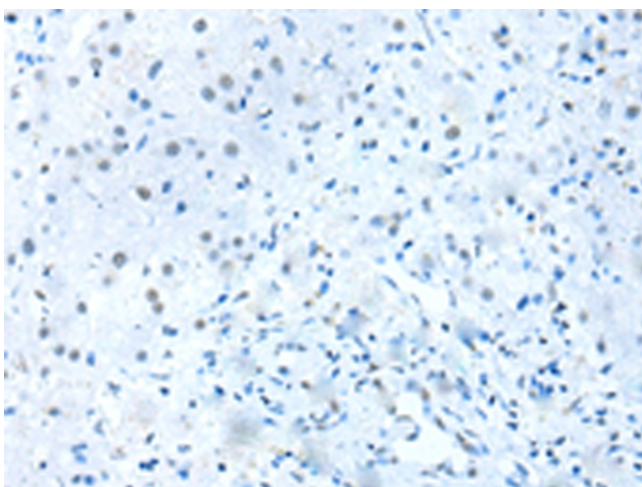
Product images:



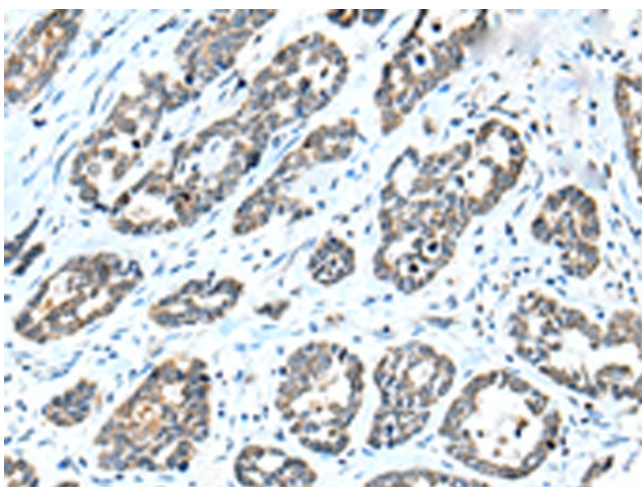
Gel: 12%SDS-PAGE
Lysate: 40 μ g
Lane 1-3: HEPG2
PC-3 and Raji cell
Primary antibody: TA365284 (NPL Antibody) at dilution 1/200
Secondary antibody: Goat anti rabbit IgG at 1/8000 dilution
Exposure time: 40 seconds



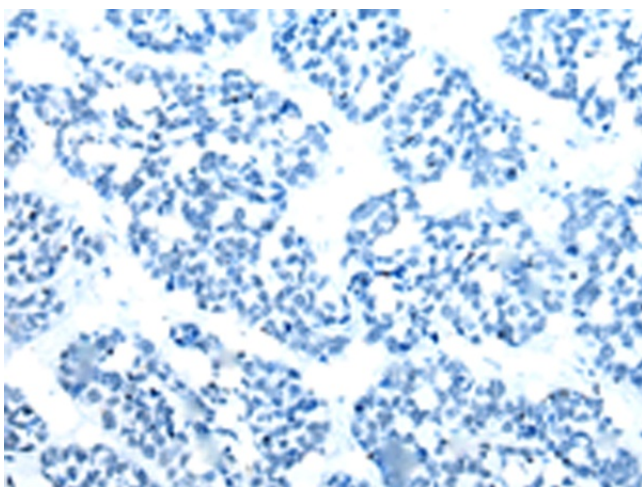
Immunohistochemistry of paraffin-embedded Human liver cancer tissue using TA365284 (NPL Antibody) at dilution 1/25 (Original magnification: $\times 200$)



Immunohistochemistry of paraffin-embedded Human liver cancer tissue using TA365284 (NPL Antibody) at dilution 1/25, treated with fusion protein. (Original magnification: $\times 200$)



Immunohistochemistry of paraffin-embedded Human esophagus cancer tissue using TA365284 (NPL Antibody) at dilution 1/25 (Original magnification: $\times 200$)



Immunohistochemistry of paraffin-embedded Human esophagus cancer tissue using TA365284 (NPL Antibody) at dilution 1/25, treated with fusion protein. (Original magnification: $\times 200$)