

## Product datasheet for **TA365276**

### **RHOV Rabbit Polyclonal Antibody**

#### **Product data:**

Product Type:	Primary Antibodies
Applications:	IHC
Recommended Dilution:	IHC: 25-100 Positive control: Human esophagus cancer Predicted cell location: Cytoplasm and Cell membrane
Reactivity:	Human, Mouse, Rat
Host:	Rabbit
Isotype:	IgG
Clonality:	Polyclonal
Immunogen:	Full length fusion protein
Formulation:	pH7.4 PBS, 0.05% NaN <sub>3</sub> , 40% Glycerol
Concentration:	lot specific
Purification:	Antigen affinity purification
Conjugation:	Unconjugated
Storage:	Store at -20°C.
Stability:	1 year
Gene Name:	ras homolog family member V
Database Link:	<a href="#">Entrez Gene 171177 Human Q96L33</a>



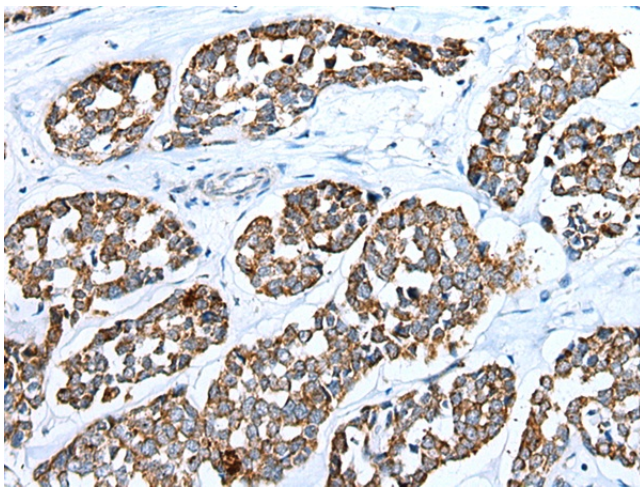
[View online »](#)

**Background:**

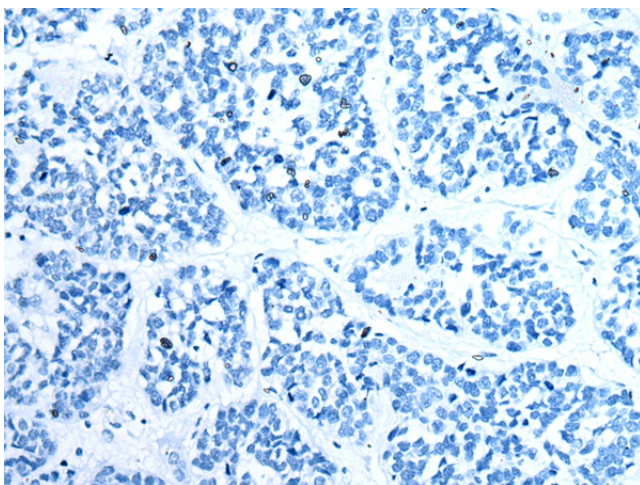
The Rho subfamily of Ras-related GTPases controls multiple aspects of cell function, including cytoskeletal rearrangement, nuclear signaling and cell growth. Rho V (ras homolog gene family, member V), also known as Rho GTPase-like protein ARHV, CHP or WRCH2 (Wnt-1 responsive Cdc42 homolog 2), is a 236 amino acid protein that controls the actin cytoskeleton through activation of the JNK pathway. A member of the Rho family and small GTPase superfamily, Rho V functions as a lipid anchor at the cytoplasmic side of the cell membrane and is expressed in placenta, pancreas and fetal brain. Rho V is implicated in cell transformation and is encoded by a gene located on human chromosome 15, which houses over 700 genes and comprises nearly 3% of the human genome. Angelman syndrome, Prader-Willi syndrome, Tay-Sachs disease and Marfan syndrome are all associated with defects in chromosome 15-localized genes.

**Synonyms:**

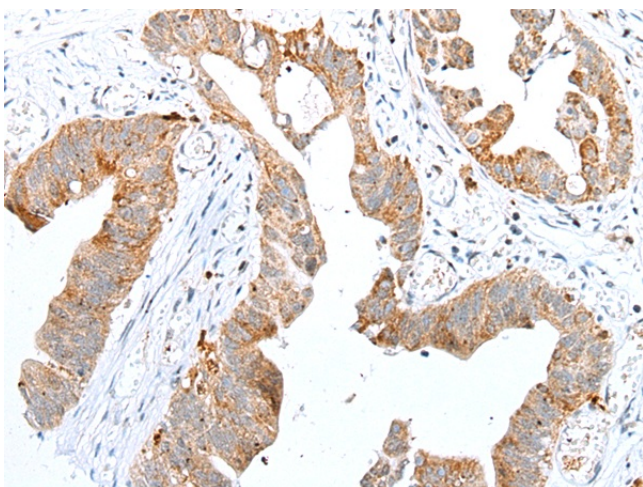
ARHV; CHP; WRCH-2; WRCH2

**Product images:**

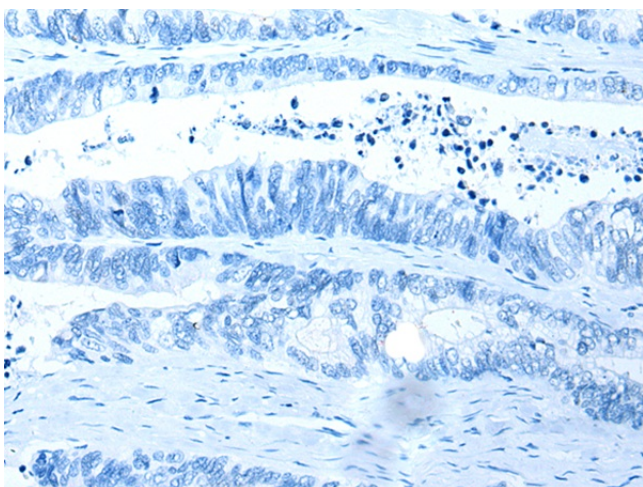
Immunohistochemistry of paraffin-embedded Human esophagus cancer tissue using TA365276 (RHOV Antibody) at dilution 1/25 (Original magnification:  $\times 200$ )



Immunohistochemistry of paraffin-embedded Human esophagus cancer tissue using TA365276 (RHOV Antibody) at dilution 1/25, treated with fusion protein. (Original magnification:  $\times 200$ )



Immunohistochemistry of paraffin-embedded Human colorectal cancer tissue using TA365276 (RHOV Antibody) at dilution 1/25 (Original magnification:  $\times 200$ )



Immunohistochemistry of paraffin-embedded Human colorectal cancer tissue using TA365276 (RHOV Antibody) at dilution 1/25, treated with fusion protein. (Original magnification:  $\times 200$ )