

Product datasheet for TA365272S

NUDT22 Rabbit Polyclonal Antibody

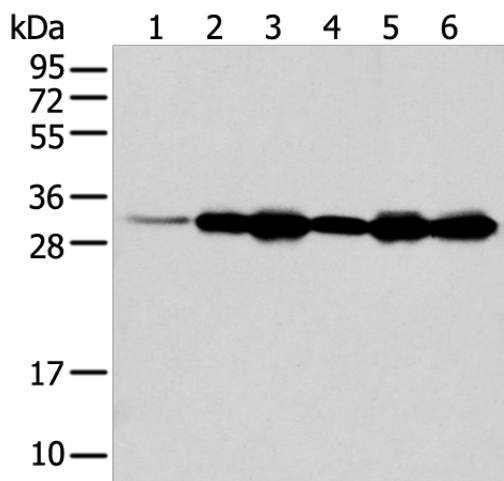
Product data:

Product Type:	Primary Antibodies
Applications:	IHC, WB
Recommended Dilution:	WB: 200-1000 WB positive control: A431 PC-3 and 231 cell Human kidney tissue, 293T and Jurkat cell IHC: 25-100 Positive control: Human liver cancer Predicted cell location: Cytoplasm
Reactivity:	Human, Mouse
Host:	Rabbit
Isotype:	IgG
Clonality:	Polyclonal
Immunogen:	Fusion protein of human NUDT22
Formulation:	pH7.4 PBS, 0.05% NaN ₃ , 40% Glycerol
Purification:	Antigen affinity purification
Conjugation:	Unconjugated
Storage:	Store at -20°C.
Stability:	1 year
Predicted Protein Size:	33 kDa
Gene Name:	nudix hydrolase 22
Database Link:	Entrez Gene 84304 Human Q9BRQ3
Background:	NUDT22 (nudix (nucleoside diphosphate linked moiety X)-type motif 22) is a member of the Nudix hydrolase family of pyrophosphatases. Nudix hydrolases contain a characteristic Nudix domain and are responsible for catalyzing the hydrolysis of nucleoside diphosphate derivatives. NUDT22 is a 303 amino acid protein that lacks the nudix box, therefore lacking hydrolase activity. The gene encoding NUDT17 maps to human chromosome 11, which makes up around 4% of human genomic DNA and is considered a gene and disease association dense chromosome.

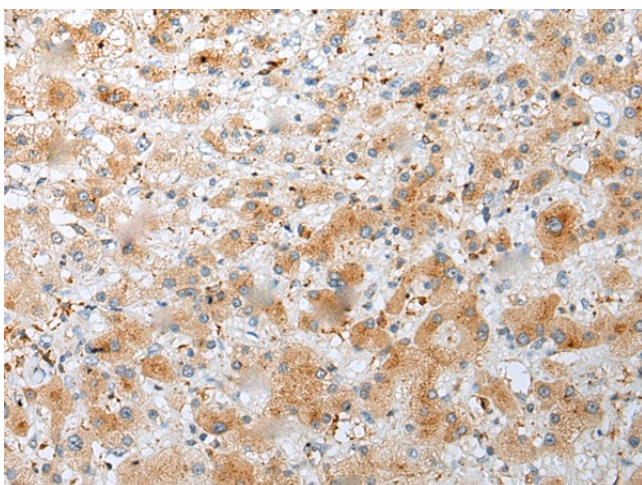

[View online »](#)

Synonyms: MGC13045

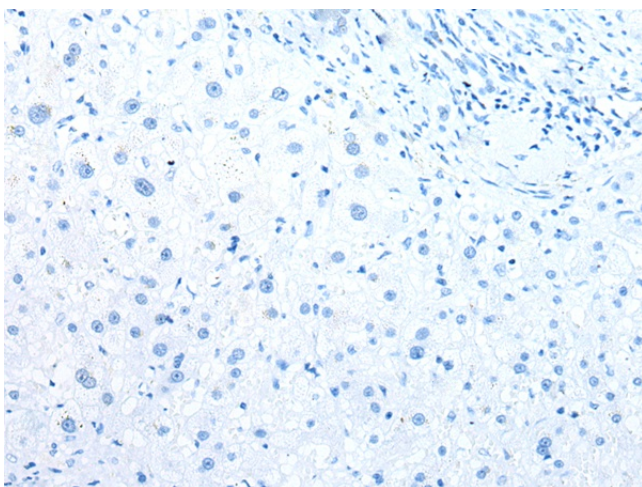
Product images:



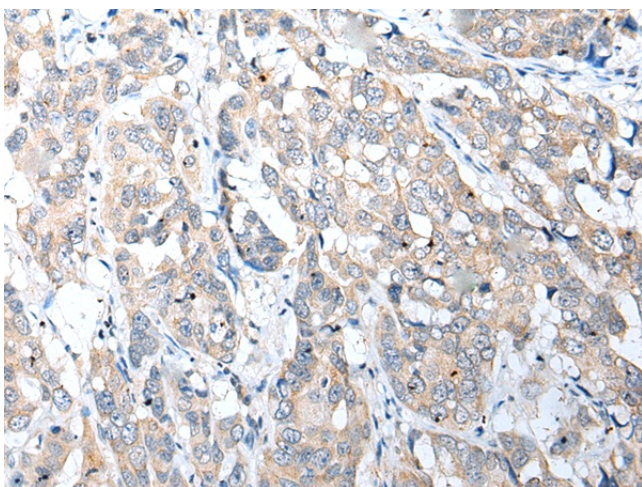
Gel: 12%SDS-PAGE
 Lysate: 40 µg
 Lane 1-6: A431
 PC-3 and 231 cell
 Human kidney tissue
 293T and Jurkat cell
 Primary antibody: [TA365272] (NUDT22 Antibody)
 at dilution 1/200
 Secondary antibody: Goat anti rabbit IgG at
 1/8000 dilution
 Exposure time: 20 seconds



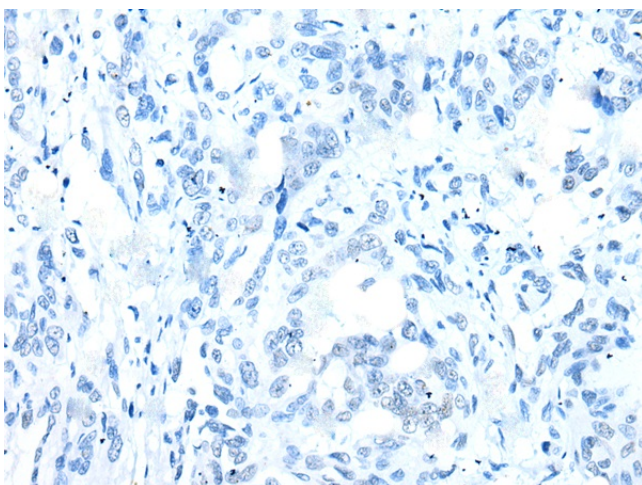
Immunohistochemistry of paraffin-embedded
 Human liver cancer tissue using [TA365272]
 (NUDT22 Antibody) at dilution 1/25 (Original
 magnification: ×200)



Immunohistochemistry of paraffin-embedded Human liver cancer tissue using [TA365272] (NUDT22 Antibody) at dilution 1/25, treated with fusion protein. (Original magnification: ×200)



Immunohistochemistry of paraffin-embedded Human breast cancer tissue using [TA365272] (NUDT22 Antibody) at dilution 1/25 (Original magnification: ×200)



Immunohistochemistry of paraffin-embedded Human breast cancer tissue using [TA365272] (NUDT22 Antibody) at dilution 1/25, treated with fusion protein. (Original magnification: ×200)