

Product datasheet for **TA365272**

NUDT22 Rabbit Polyclonal Antibody

Product data:

Product Type:	Primary Antibodies
Applications:	IHC, WB
Recommended Dilution:	WB: 200-1000 WB positive control: A431 PC-3 and 231 cell Human kidney tissue, 293T and Jurkat cell IHC: 25-100 Positive control: Human liver cancer Predicted cell location: Cytoplasm
Reactivity:	Human, Mouse
Host:	Rabbit
Isotype:	IgG
Clonality:	Polyclonal
Immunogen:	Fusion protein of human NUDT22
Formulation:	pH7.4 PBS, 0.05% NaN ₃ , 40% Glycerol
Concentration:	lot specific
Purification:	Antigen affinity purification
Conjugation:	Unconjugated
Storage:	Store at -20°C.
Stability:	1 year
Predicted Protein Size:	33 kDa
Gene Name:	nudix hydrolase 22
Database Link:	Entrez Gene 84304 Human Q9BRQ3



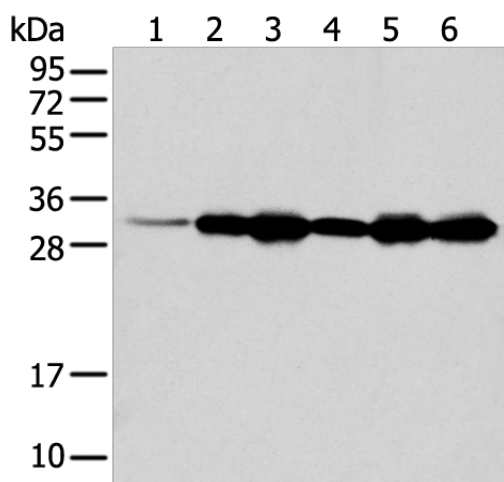
[View online »](#)

Background:

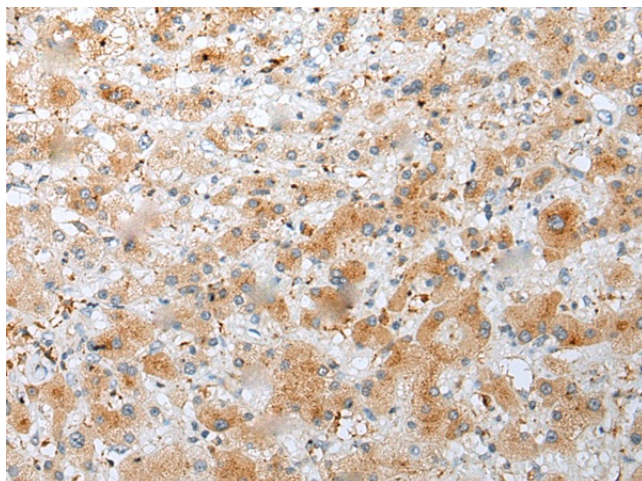
NUDT22 (nudix (nucleoside diphosphate linked moiety X)-type motif 22) is a member of the Nudix hydrolase family of pyrophosphatases. Nudix hydrolases contain a characteristic Nudix domain and are responsible for catalyzing the hydrolysis of nucleoside diphosphate derivatives. NUDT22 is a 303 amino acid protein that lacks the nudix box, therefore lacking hydrolase activity. The gene encoding NUDT17 maps to human chromosome 11, which makes up around 4% of human genomic DNA and is considered a gene and disease association dense chromosome.

Synonyms:

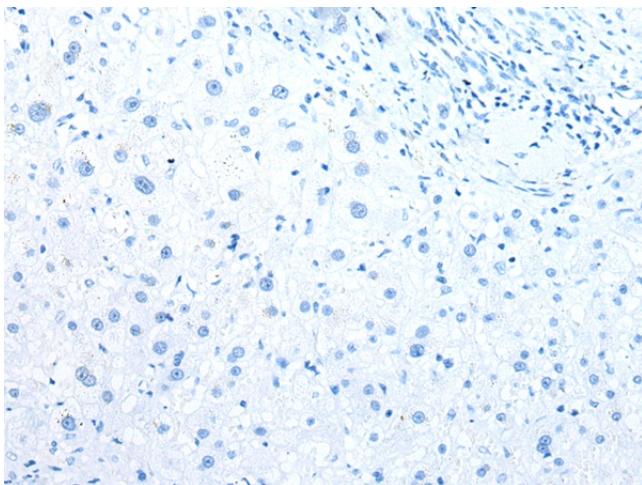
MGC13045

Product images:

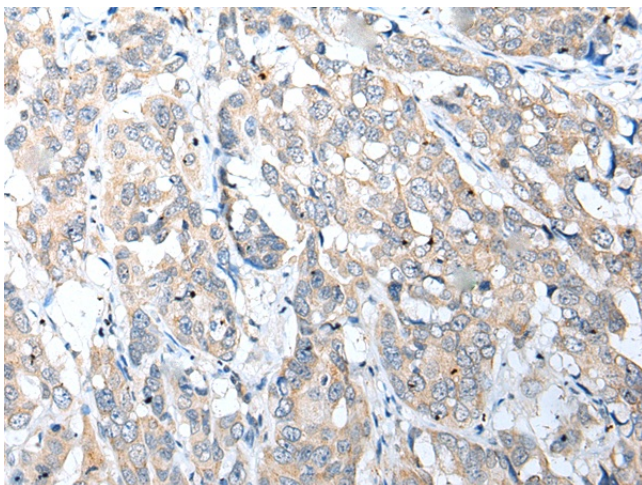
Gel: 12%SDS-PAGE
Lysate: 40 µg
Lane 1-6: A431
PC-3 and 231 cell
Human kidney tissue
293T and Jurkat cell
Primary antibody: TA365272 (NUDT22 Antibody)
at dilution 1/200
Secondary antibody: Goat anti rabbit IgG at
1/8000 dilution
Exposure time: 20 seconds



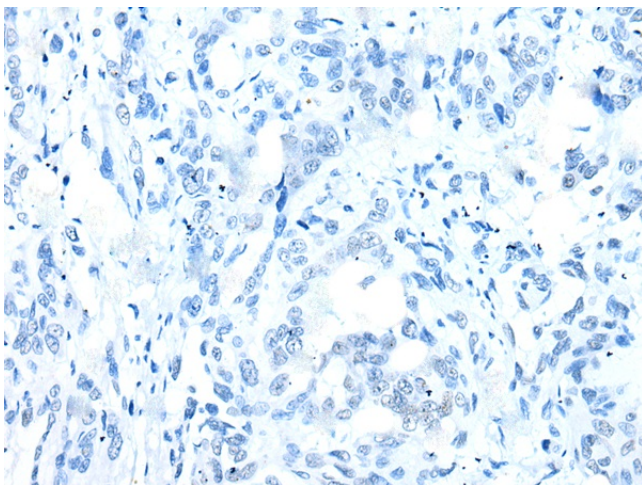
Immunohistochemistry of paraffin-embedded
Human liver cancer tissue using TA365272
(NUDT22 Antibody) at dilution 1/25 (Original
magnification: ×200)



Immunohistochemistry of paraffin-embedded Human liver cancer tissue using TA365272 (NUDT22 Antibody) at dilution 1/25, treated with fusion protein. (Original magnification: $\times 200$)



Immunohistochemistry of paraffin-embedded Human breast cancer tissue using TA365272 (NUDT22 Antibody) at dilution 1/25 (Original magnification: $\times 200$)



Immunohistochemistry of paraffin-embedded Human breast cancer tissue using TA365272 (NUDT22 Antibody) at dilution 1/25, treated with fusion protein. (Original magnification: $\times 200$)