

## Product datasheet for **TA365269S**

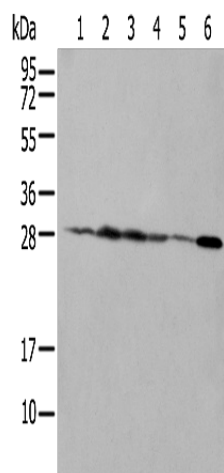
### NUDT21 Rabbit Polyclonal Antibody

#### Product data:

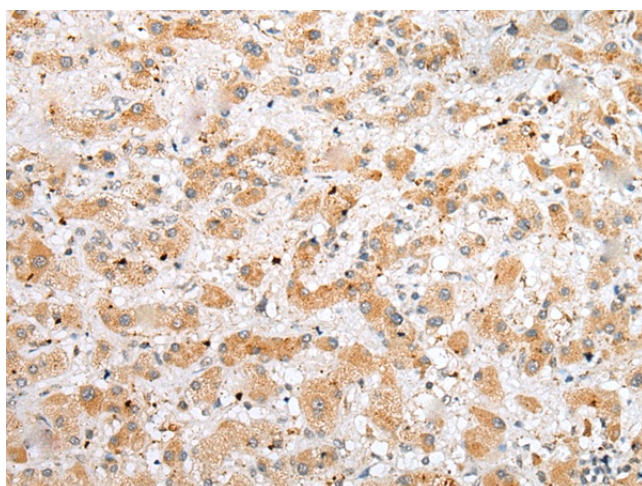
|                         |   |
|-------------------------|---|
| Product Type:           | Primary Antibodies  |
| Applications:           | IHC, WB   |
| Recommended Dilution:   | WB: 200-1000<br>WB positive control: A431 □293T and Hela cell □ Human fetal brain tissue, A172 and HEPG2 cell<br>IHC: 25-100<br>Positive control: Human liver cancer<br>Predicted cell location: Cytoplasm or Nucleus   |
| Reactivity:             | Human, Mouse, Rat   |
| Host:                   | Rabbit  |
| Isotype:                | IgG   |
| Clonality:              | Polyclonal  |
| Immunogen:              | Full length fusion protein  |
| Formulation:            | pH7.4 PBS, 0.05% NaN <sub>3</sub> , 40% Glycerol  |
| Purification:           | Antigen affinity purification   |
| Conjugation:            | Unconjugated  |
| Storage:                | Store at -20°C.   |
| Stability:              | 1 year  |
| Predicted Protein Size: | 26 kDa  |
| Gene Name:              | nudix hydrolase 21  |
| Database Link:          | <a href="#">Entrez Gene 11051 Human O43809</a>  |
| Background:             | The protein encoded by this gene is one subunit of a cleavage factor required for 3' RNA cleavage and polyadenylation processing. The interaction of the protein with the RNA is one of the earliest steps in the assembly of the 3' end processing complex and facilitates the recruitment of other processing factors. This gene encodes the 25kD subunit of the protein complex, which is composed of four polypeptides. |
| Synonyms:               | CFIM25; CPSF5; CPSF25; DKFZp686H1588  |



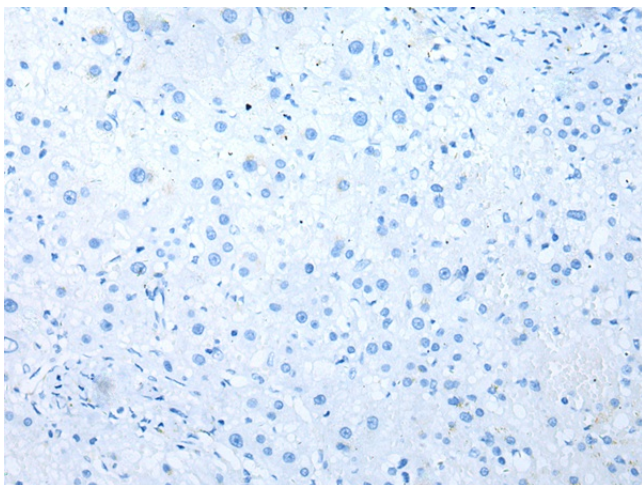
[View online »](#)

**Product images:**

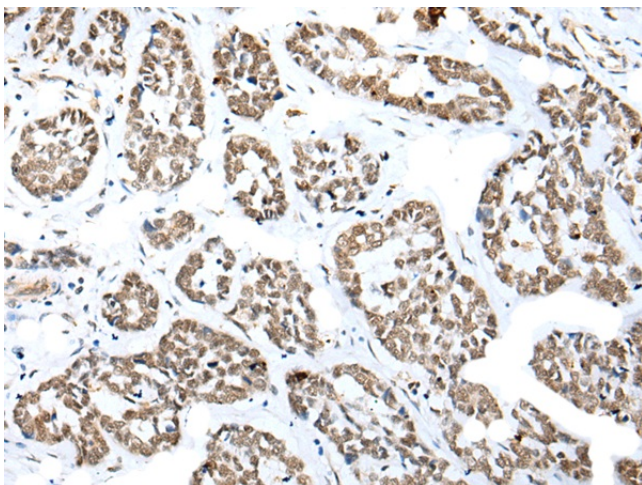
Gel: 12%SDS-PAGE  
Lysate: 40 µg  
Lane 1-6: A431  
293T and HeLa cell  
Human fetal brain tissue  
A172 and HEPG2 cell  
Primary antibody: [TA365269] (NUDT21 Antibody)  
at dilution 1/250  
Secondary antibody: Goat anti rabbit IgG at  
1/8000 dilution  
Exposure time: 5 seconds



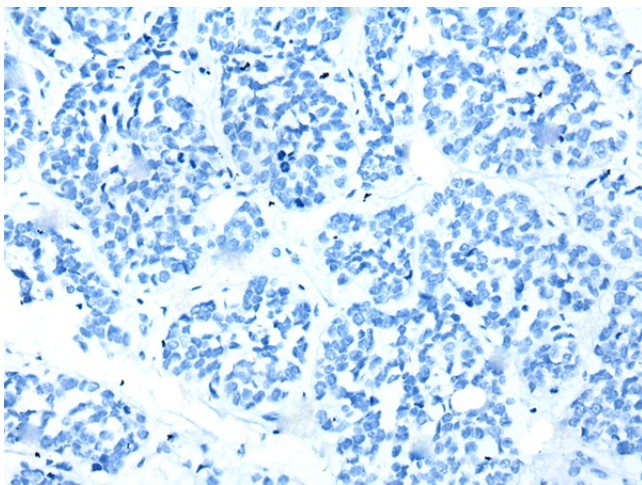
Immunohistochemistry of paraffin-embedded  
Human liver cancer tissue using [TA365269]  
(NUDT21 Antibody) at dilution 1/25 (Original  
magnification: ×200)



Immunohistochemistry of paraffin-embedded Human liver cancer tissue using [TA365269] (NUDT21 Antibody) at dilution 1/25, treated with fusion protein. (Original magnification: ×200)



Immunohistochemistry of paraffin-embedded Human esophagus cancer tissue using [TA365269] (NUDT21 Antibody) at dilution 1/25 (Original magnification: ×200)



Immunohistochemistry of paraffin-embedded Human esophagus cancer tissue using [TA365269] (NUDT21 Antibody) at dilution 1/25, treated with fusion protein. (Original magnification: ×200)