

## Product datasheet for **TA365269**

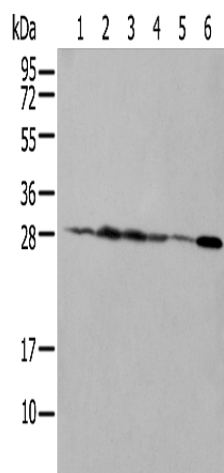
### NUDT21 Rabbit Polyclonal Antibody

#### Product data:

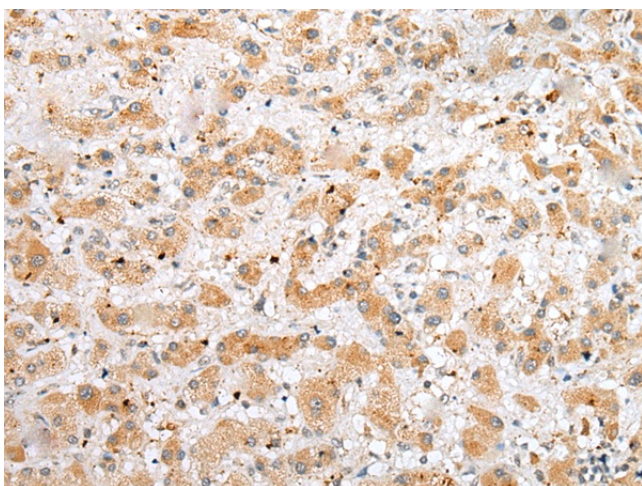
Product Type:	Primary Antibodies
Applications:	IHC, WB
Recommended Dilution:	WB: 200-1000 WB positive control: A431 □ 293T and Hela cell □ Human fetal brain tissue, A172 and HEPG2 cell IHC: 25-100 Positive control: Human liver cancer Predicted cell location: Cytoplasm or Nucleus
Reactivity:	Human, Mouse, Rat
Host:	Rabbit
Isotype:	IgG
Clonality:	Polyclonal
Immunogen:	Full length fusion protein
Formulation:	pH7.4 PBS, 0.05% NaN <sub>3</sub> , 40% Glycerol
Concentration:	lot specific
Purification:	Antigen affinity purification
Conjugation:	Unconjugated
Storage:	Store at -20°C.
Stability:	1 year
Predicted Protein Size:	26 kDa
Gene Name:	nudix hydrolase 21
Database Link:	<a href="#">Entrez Gene 11051 Human O43809</a>
Background:	The protein encoded by this gene is one subunit of a cleavage factor required for 3' RNA cleavage and polyadenylation processing. The interaction of the protein with the RNA is one of the earliest steps in the assembly of the 3' end processing complex and facilitates the recruitment of other processing factors. This gene encodes the 25kD subunit of the protein complex, which is composed of four polypeptides.
Synonyms:	CFIM25; CPSF5; CPSF25; DKFZp686H1588



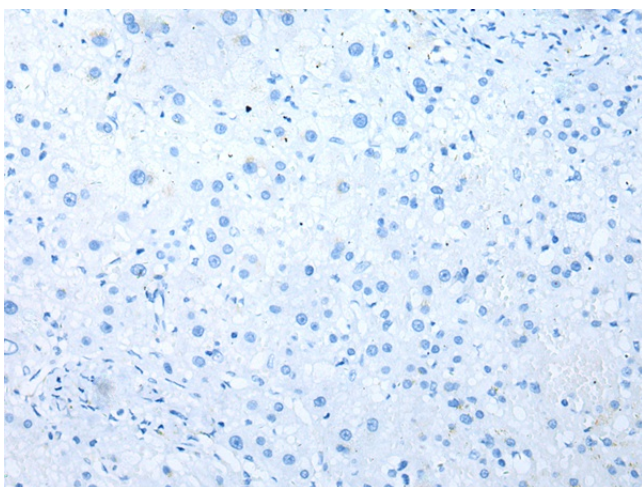
[View online »](#)

**Product images:**

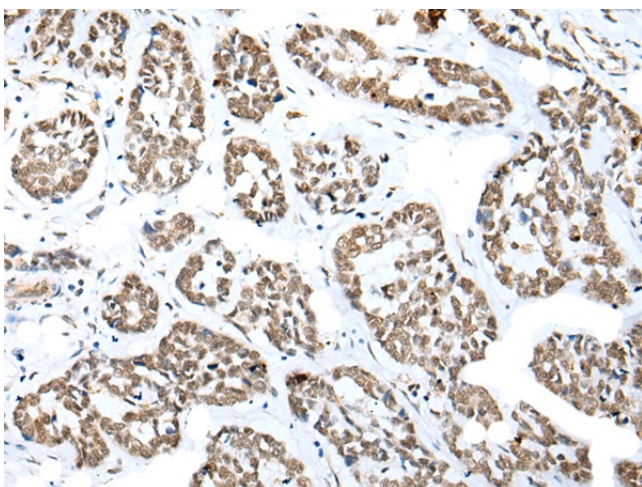
Gel: 12%SDS-PAGE  
Lysate: 40  $\mu$ g  
Lane 1-6: A431  
293T and Hela cell  
Human fetal brain tissue  
A172 and HEPG2 cell  
Primary antibody: TA365269 (NUDT21 Antibody)  
at dilution 1/250  
Secondary antibody: Goat anti rabbit IgG at  
1/8000 dilution  
Exposure time: 5 seconds



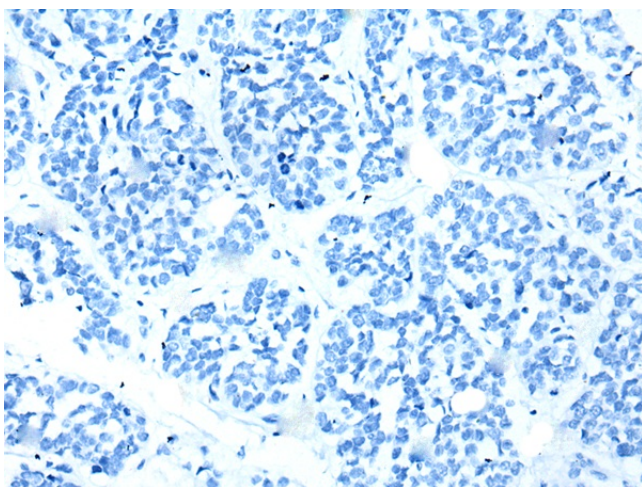
Immunohistochemistry of paraffin-embedded  
Human liver cancer tissue using TA365269  
(NUDT21 Antibody) at dilution 1/25 (Original  
magnification:  $\times$ 200)



Immunohistochemistry of paraffin-embedded Human liver cancer tissue using TA365269 (NUDT21 Antibody) at dilution 1/25, treated with fusion protein. (Original magnification:  $\times 200$ )



Immunohistochemistry of paraffin-embedded Human esophagus cancer tissue using TA365269 (NUDT21 Antibody) at dilution 1/25 (Original magnification:  $\times 200$ )



Immunohistochemistry of paraffin-embedded Human esophagus cancer tissue using TA365269 (NUDT21 Antibody) at dilution 1/25, treated with fusion protein. (Original magnification:  $\times 200$ )