

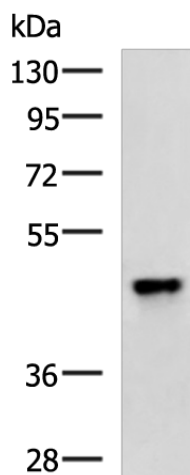
Product datasheet for **TA365268**

TBRG1 Rabbit Polyclonal Antibody

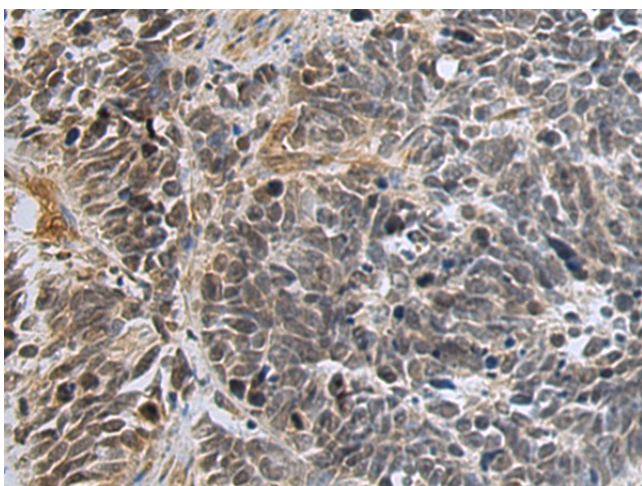
Product data:

Product Type:	Primary Antibodies
Applications:	IHC, WB
Recommended Dilution:	WB: 500-2000 WB positive control: Mouse pancreas tissue lysate IHC: 100-200 Positive control: Human esophagus cancer Predicted cell location: Nucleus
Reactivity:	Human, Mouse
Host:	Rabbit
Isotype:	IgG
Clonality:	Polyclonal
Immunogen:	Fusion protein of human TBRG1
Formulation:	pH7.4 PBS, 0.05% NaN ₃ , 40% Glycerol
Concentration:	lot specific
Purification:	Antigen affinity purification
Conjugation:	Unconjugated
Storage:	Store at -20°C.
Stability:	1 year
Predicted Protein Size:	45 kDa
Gene Name:	transforming growth factor beta regulator 1
Database Link:	Entrez Gene 84897 Human Q3YBR2
Background:	Acts as a growth inhibitor. Can activate p53/TP53, causes G1 arrest and collaborates with CDKN2A to restrict proliferation, but does not require either protein to inhibit DNA synthesis. Redistributes CDKN2A into the nucleoplasm. Involved in maintaining chromosomal stability.
Synonyms:	AA408552; AA409675; mFLJ00213; MGC95119; Niam; Tb-5

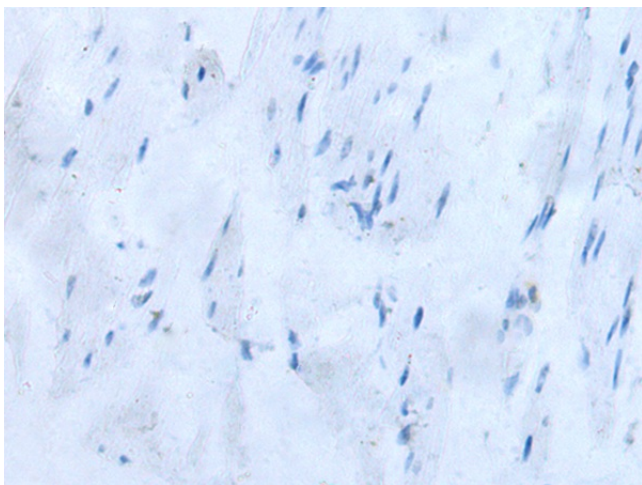
[View online »](#)

Product images:


Gel: 8%SDS-PAGE
 Lysate: 40 µg
 Lane: Mouse pancreas tissue lysate
 Primary antibody: TA365268 (TBRG1 Antibody) at dilution 1/550
 Secondary antibody: Goat anti rabbit IgG at 1/5000 dilution
 Exposure time: 5 minutes



Immunohistochemistry of paraffin-embedded Human esophagus cancer tissue using TA365268 (TBRG1 Antibody) at dilution 1/90 (Original magnification: ×200)



Immunohistochemistry of paraffin-embedded Human esophagus cancer tissue using TA365268 (TBRG1 Antibody) at dilution 1/90, treated with fusion protein. (Original magnification: ×200)