

Product datasheet for **TA365266**

SPCS2 Rabbit Polyclonal Antibody

Product data:

Product Type:	Primary Antibodies
Applications:	IHC, WB
Recommended Dilution:	WB: 500-2000 WB positive control: Rat lung tissue, HT-29 cell, Mouse adrenal gland tissue and K-562 cell IHC: 25-100 Positive control: Human gastric cancer Predicted cell location: Nucleus and Cytoplasm
Reactivity:	Human, Mouse, Rat
Host:	Rabbit
Isotype:	IgG
Clonality:	Polyclonal
Immunogen:	Fusion protein of human SPCS2
Formulation:	pH7.4 PBS, 0.05% NaN ₃ , 40% Glycerol
Concentration:	lot specific
Purification:	Antigen affinity purification
Conjugation:	Unconjugated
Storage:	Store at -20°C.
Stability:	1 year
Predicted Protein Size:	25 kDa
Gene Name:	signal peptidase complex subunit 2
Database Link:	Entrez Gene 9789 Human Q15005



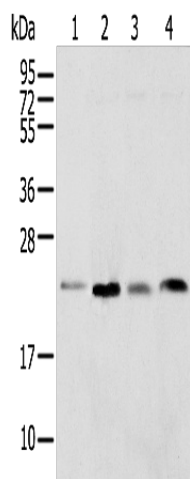
[View online »](#)

Background:

SPCS2 (signal peptidase complex subunit 2), also known as SPC25 or microsomal signal peptidase 25 kDa subunit, is a 226 amino acid multi-pass membrane protein that localizes to both the microsome and the endoplasmic reticulum (ER), and belongs to the SPCS (signal peptidase complex subunit) family. Existing as a component of the microsomal signal peptidase complex which consists of five members, SPCS2 removes signal peptides from nascent proteins as they are translocated into the lumen of the ER. The gene encoding SPCS2 is located on human chromosome 11, which houses over 1,400 genes and comprises nearly 4% of the human genome.

Synonyms:

KIAA0102; MGC117366; SPC25

Product images:

Gel: 12%SDS-PAGE

Lysate: 40 μ g

Lane 1-4: Rat lung tissue

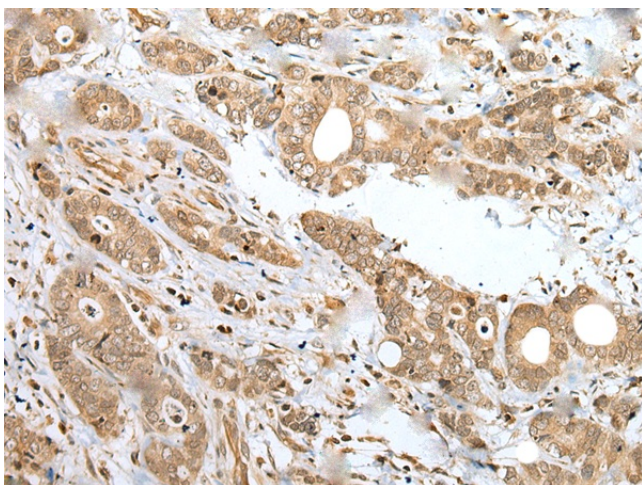
HT-29 cell

Mouse adrenal gland tissue and K-562 cell

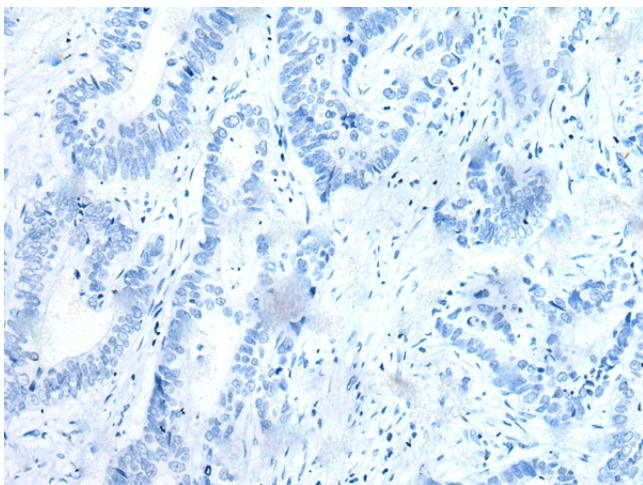
Primary antibody: TA365266 (SPCS2 Antibody) at dilution 1/450

Secondary antibody: Goat anti rabbit IgG at 1/8000 dilution

Exposure time: 1 second



Immunohistochemistry of paraffin-embedded Human gastric cancer tissue using TA365266 (SPCS2 Antibody) at dilution 1/35 (Original magnification: $\times 200$)



Immunohistochemistry of paraffin-embedded Human gastric cancer tissue using TA365266 (SPCS2 Antibody) at dilution 1/35, treated with fusion protein. (Original magnification: $\times 200$)