

## Product datasheet for **TA365260**

### INDOL1 (IDO2) Rabbit Polyclonal Antibody

#### Product data:

Product Type:	Primary Antibodies
Applications:	WB
Recommended Dilution:	WB: 200-1000 WB positive control: Human kidney tissue □ SKOV3 cell
Reactivity:	Human
Host:	Rabbit
Isotype:	IgG
Clonality:	Polyclonal
Immunogen:	Full length fusion protein
Formulation:	pH7.4 PBS, 0.05% NaN <sub>3</sub> , 40% Glycerol
Concentration:	lot specific
Purification:	Antigen affinity purification
Conjugation:	Unconjugated
Storage:	Store at -20°C.
Stability:	1 year
Predicted Protein Size:	45 kDa
Gene Name:	indoleamine 2,3-dioxygenase 2
Database Link:	<a href="#">Entrez Gene 169355 Human Q6ZQW0</a>

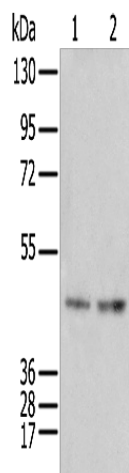
**Background:** INDOL1 is also known as IDO2 (indoleamine 2,3-dioxygenase 2) and is a 407 amino acid protein that is expressed in various tissues, including liver, small intestine, spleen, placenta, thymus, lung, brain, kidney, colon and dendritic cells. INDOL1 is selectively inhibited by D-1MT (1-methyl-d-tryptophan), which also inhibits IDO (indoleamine 2,3-dioxygenase) and is significant because IDO expression causes suppression of T cell responses to tumors in dendritic cells. The inhibition of INDOL1 by D-1MT suggests a common function in immunomodulation. In the human INDOL1 gene, two single nucleotide polymorphisms have been detected which abolish the enzymatic function of INDOL1.

**Synonyms:** INDOL1



[View online »](#)

## Product images:



Gel: 8%SDS-PAGE  
Lysate: 40  $\mu$ g  
Lane 1-2: Human kidney tissue  
SKOV3 cell  
Primary antibody: TA365260 (IDO2 Antibody) at  
dilution 1/250  
Secondary antibody: Goat anti rabbit IgG at  
1/8000 dilution  
Exposure time: 30 seconds