

Product datasheet for **TA365257**

THEM5 Rabbit Polyclonal Antibody

Product data:

Product Type:	Primary Antibodies
Applications:	IHC
Recommended Dilution:	IHC: 25-100 Positive control: Human liver cancer Predicted cell location: Cytoplasm
Reactivity:	Human
Host:	Rabbit
Isotype:	IgG
Clonality:	Polyclonal
Immunogen:	Full length fusion protein
Formulation:	pH7.4 PBS, 0.05% NaN ₃ , 40% Glycerol
Concentration:	lot specific
Purification:	Antigen affinity purification
Conjugation:	Unconjugated
Storage:	Store at -20°C.
Stability:	1 year
Gene Name:	thioesterase superfamily member 5
Database Link:	Entrez Gene 284486 Human Q8N1Q8



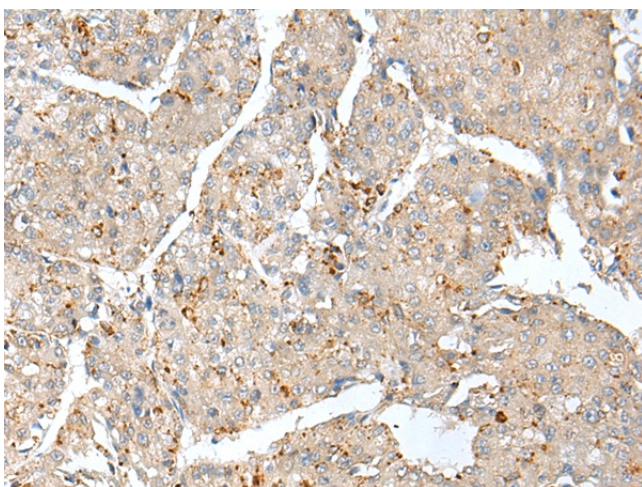
[View online »](#)

Background:

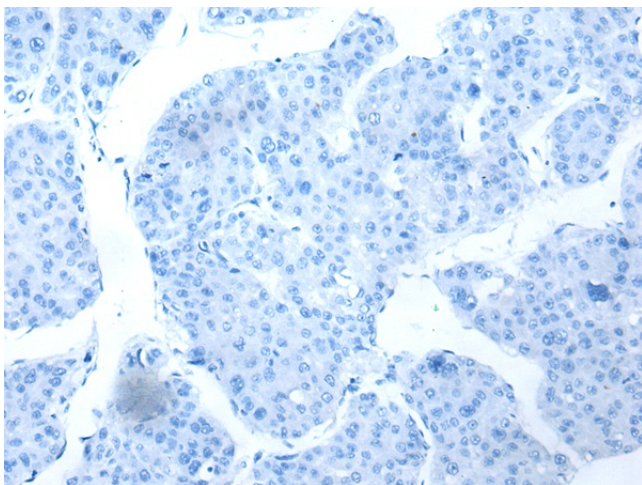
THEM5 (thioesterase superfamily member 5) is a 247 amino acid protein that belongs to the thioesterase superfamily. The gene that encodes THEM5 contains nearly 8,000 bases and maps to human chromosome 1q21.3. Chromosome 1 is the largest human chromosome spanning about 260 million base pairs and making up 8% of the human genome. There are about 3,000 genes on chromosome 1, and considering the great number of genes there are also a large number of diseases associated with chromosome 1. Notably, the rare aging disease Hutchinson-Gilford progeria is associated with the LMNA gene which encodes lamin A. When defective, the LMNA gene product can build up in the nucleus and cause characteristic nuclear blebs. The mechanism of rapidly enhanced aging is unclear and is a topic of continuing exploration. The MUTYH gene is located on chromosome 1 and is partially responsible for familial adenomatous polyposis. Stickler syndrome, Parkinsons, Gaucher disease and Usher syndrome are also associated with chromosome 1. Has acyl-CoA thioesterase activity towards long-chain (C16 and C18) fatty acyl-CoA substrates, with a preference for linoleyl-CoA and other unsaturated long-chain fatty acid-CoA esters. Plays an important role in mitochondrial fatty acid metabolism, and in remodeling of the mitochondrial lipid cardiolipin. Required for normal mitochondrial function.

Synonyms:

FLJ37964; MGC126659; MGC138444

Product images:

Immunohistochemistry of paraffin-embedded Human liver cancer tissue using TA365257 (THEM5 Antibody) at dilution 1/25 (Original magnification: $\times 200$)



Immunohistochemistry of paraffin-embedded Human liver cancer tissue using TA365257 (THEM5 Antibody) at dilution 1/25, treated with fusion protein. (Original magnification: $\times 200$)