

## Product datasheet for **TA365253**

### **DAND5 Rabbit Polyclonal Antibody**

#### **Product data:**

Product Type:	Primary Antibodies
Applications:	IHC
Recommended Dilution:	IHC: 25-100 Positive control: Human esophagus cancer Predicted cell location: Cytoplasm
Reactivity:	Human
Host:	Rabbit
Isotype:	IgG
Clonality:	Polyclonal
Immunogen:	Full length fusion protein
Formulation:	pH7.4 PBS, 0.05% NaN <sub>3</sub> , 40% Glycerol
Concentration:	lot specific
Purification:	Antigen affinity purification
Conjugation:	Unconjugated
Storage:	Store at -20°C.
Stability:	1 year
Gene Name:	DAN domain BMP antagonist family member 5
Database Link:	<a href="#">Entrez Gene 199699 Human Q8N907</a>

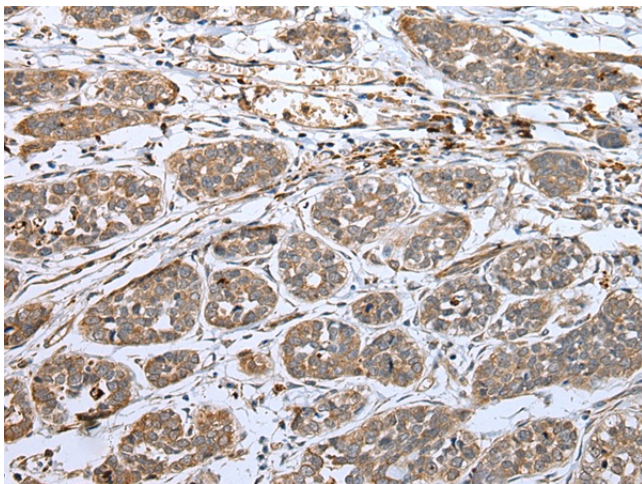
**Background:** This gene encodes a member of the BMP (bone morphogenic protein) antagonist family. Like BMPs, BMP antagonists contain cystine knots and typically form homo- and heterodimers. The CAN (cerberus and dan) subfamily of BMP antagonists, to which this gene belongs, is characterized by a C-terminal cystine knot with an eight-membered ring. The antagonistic effect of the secreted protein encoded by this gene is likely due to its direct binding to BMP proteins. As an antagonist of BMP, this gene may play a role in regulating organogenesis, body patterning, and tissue differentiation. In mouse, this protein has been shown to bind Nodal and to inhibit the Nodal signaling pathway which patterns left/right body asymmetry.



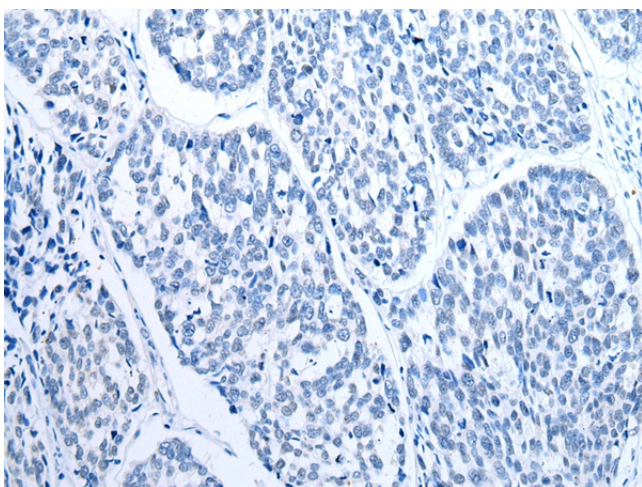
[View online »](#)

Synonyms: CER2; Cerl-2; CERL2; CKTSF1B3; COCO; CRL2; dante; DTE; FLJ38607; GREM3; Gremlin-3; MGC126849; SP1

### Product images:



Immunohistochemistry of paraffin-embedded Human esophagus cancer tissue using TA365253 (DAND5 Antibody) at dilution 1/25 (Original magnification:  $\times 200$ )



Immunohistochemistry of paraffin-embedded Human esophagus cancer tissue using TA365253 (DAND5 Antibody) at dilution 1/25, treated with fusion protein. (Original magnification:  $\times 200$ )