

Product datasheet for **TA365249**

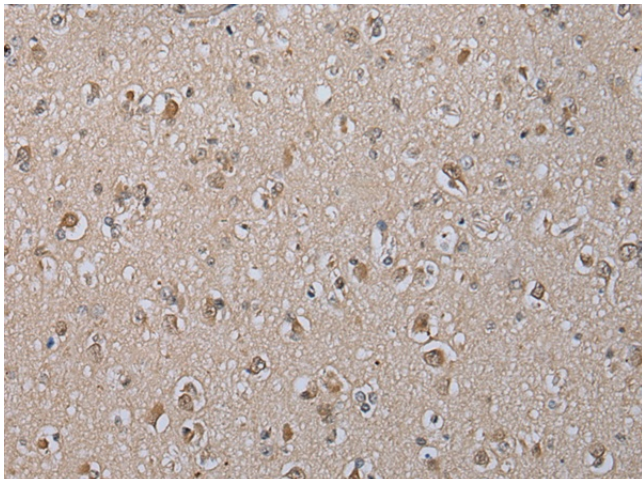
C1orf38 (THEMIS2) Rabbit Polyclonal Antibody

Product data:

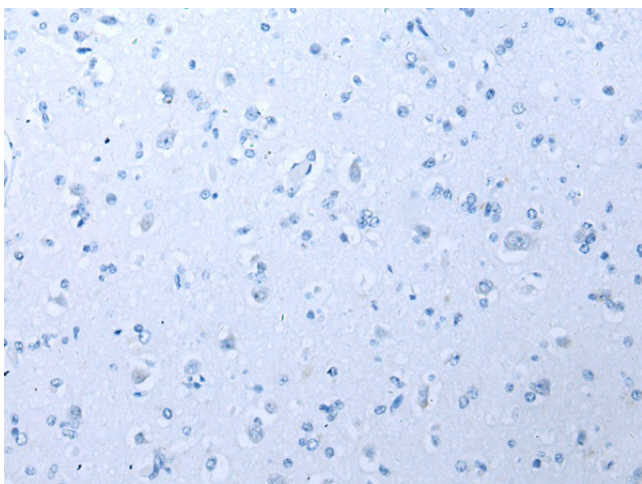
Product Type:	Primary Antibodies
Applications:	IHC
Recommended Dilution:	IHC: 25-100 Positive control: Human brain Predicted cell location: Cytoplasm and Cell membrane
Reactivity:	Human
Host:	Rabbit
Isotype:	IgG
Clonality:	Polyclonal
Immunogen:	Fusion protein of human THEMIS2
Formulation:	pH7.4 PBS, 0.05% NaN ₃ , 40% Glycerol
Concentration:	lot specific
Purification:	Antigen affinity purification
Conjugation:	Unconjugated
Storage:	Store at -20°C.
Stability:	1 year
Gene Name:	thymocyte selection associated family member 2
Database Link:	Entrez Gene 9473 Human Q5TEJ8
Background:	May constitute a control point in macrophage inflammatory response, promoting LPS-induced TNF production.
Synonyms:	C1orf38; ICB-1



[View online »](#)

Product images:

Immunohistochemistry of paraffin-embedded Human brain tissue using TA365249 (THEMIS2 Antibody) at dilution 1/25 (Original magnification: $\times 200$)



Immunohistochemistry of paraffin-embedded Human brain tissue using TA365249 (THEMIS2 Antibody) at dilution 1/25, treated with fusion protein. (Original magnification: $\times 200$)