

Product datasheet for **TA365248S**

ITLN2 Rabbit Polyclonal Antibody

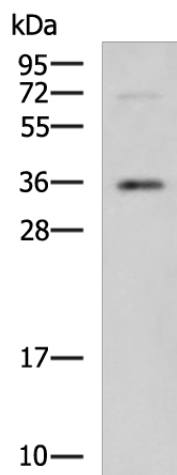
Product data:

| | |
|-------------------------|--|
| Product Type: | Primary Antibodies |
| Applications: | IHC, WB |
| Recommended Dilution: | WB: 200-1000 WB positive control: Human ileum tissue lysate IHC: 25-100 Positive control: Human thyroid cancer Predicted cell location: Secreted |
| Reactivity: | Human |
| Host: | Rabbit |
| Isotype: | IgG |
| Clonality: | Polyclonal |
| Immunogen: | Fusion protein of human ITLN2 |
| Formulation: | pH7.4 PBS, 0.05% NaN ₃ , 40% Glycerol |
| Purification: | Antigen affinity purification |
| Conjugation: | Unconjugated |
| Storage: | Store at -20°C. |
| Stability: | 1 year |
| Predicted Protein Size: | 36 kDa |
| Gene Name: | intelectin 2 |
| Database Link: | Entrez Gene 142683 Human Q8WWU7 |
| Background: | May play a role in the defense system against pathogens. Expressed only in the small intestine. |
| Synonyms: | HL-2; HL2 |



[View online »](#)

Product images:



Gel: 12%SDS-PAGE

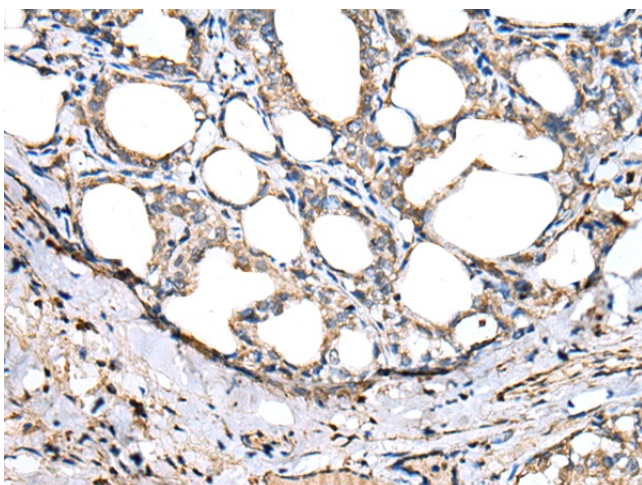
Lysate: 40 µg

Lane: Human ileum tissue lysate

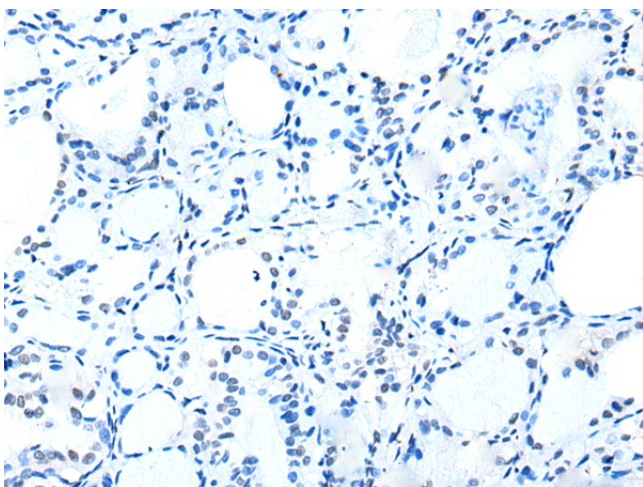
Primary antibody: [TA365248] (ITLN2 Antibody) at dilution 1/300

Secondary antibody: Goat anti rabbit IgG at 1/5000 dilution

Exposure time: 15 seconds



Immunohistochemistry of paraffin-embedded Human thyroid cancer tissue using [TA365248] (ITLN2 Antibody) at dilution 1/20 (Original magnification: ×200)



Immunohistochemistry of paraffin-embedded Human thyroid cancer tissue using [TA365248] (ITLN2 Antibody) at dilution 1/20, treated with fusion protein. (Original magnification: ×200)