

## Product datasheet for **TA365227S**

### ZNF621 Rabbit Polyclonal Antibody

#### Product data:

Product Type:	Primary Antibodies
Applications:	IHC
Recommended Dilution:	IHC: 25-100 Positive control: Human esophagus cancer Predicted cell location: Nucleus
Reactivity:	Human
Host:	Rabbit
Isotype:	IgG
Clonality:	Polyclonal
Immunogen:	Fusion protein of human ZNF621
Formulation:	pH7.4 PBS, 0.05% NaN <sub>3</sub> , 40% Glycerol
Purification:	Antigen affinity purification
Conjugation:	Unconjugated
Storage:	Store at -20°C.
Stability:	1 year
Gene Name:	zinc finger protein 621
Database Link:	<a href="#">Entrez Gene 285268 Human Q6ZSS3</a>



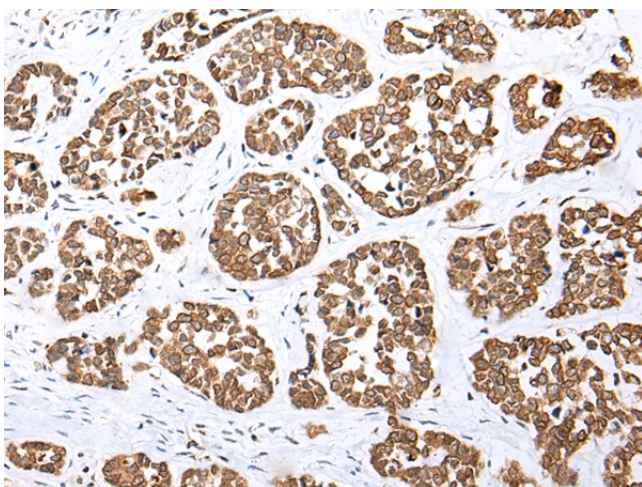
[View online »](#)

**Background:**

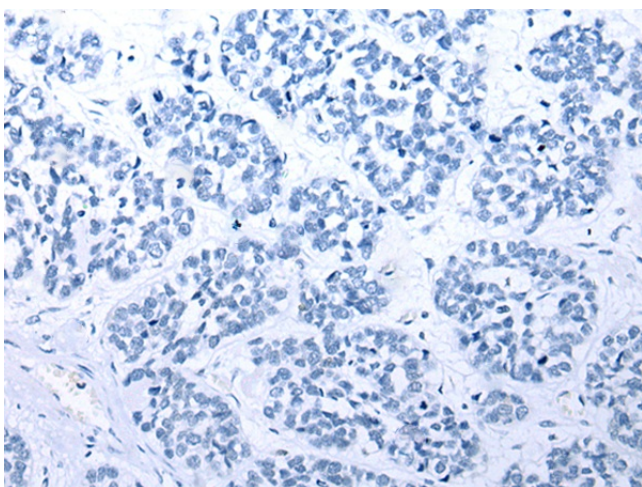
Zinc-finger proteins contain DNA-binding domains and have a wide variety of functions, most of which encompass some form of transcriptional activation or repression. The majority of zinc-finger proteins contain a Krüppel-type DNA binding domain and a KRAB domain, which is thought to interact with KAP1, thereby recruiting histone modifying proteins. As a member of the krueppel C2H2-type zinc-finger protein family, ZNF621 (Zinc finger protein 621) is a 439 amino acid nuclear protein that contains one KRAB domain and seven C2H2-type zinc fingers. The gene encoding ZNF621 maps to human chromosome 3, which is made up of about 214 million bases encoding over 1,100 genes, including a chemokine receptor (CKR) gene cluster and a variety of human cancer-related gene loci. Marfan Syndrome, porphyria, von Hippel-Lindau syndrome, osteogenesis imperfecta and Charcot-Marie-Tooth Disease are a few of the numerous genetic diseases associated with chromosome 3. There are two isoforms of ZNF621 that are produced as a result of alternative splicing events. May be involved in transcriptional regulation.

**Synonyms:**

DKFZp686B11107; FLJ23786; FLJ45246; MGC126668

**Product images:**

Immunohistochemistry of paraffin-embedded Human esophagus cancer tissue using [TA365227] (ZNF621 Antibody) at dilution 1/20 (Original magnification:  $\times 200$ )



Immunohistochemistry of paraffin-embedded Human esophagus cancer tissue using [TA365227] (ZNF621 Antibody) at dilution 1/20, treated with fusion protein. (Original magnification: ×200)