

## Product datasheet for **TA365225**

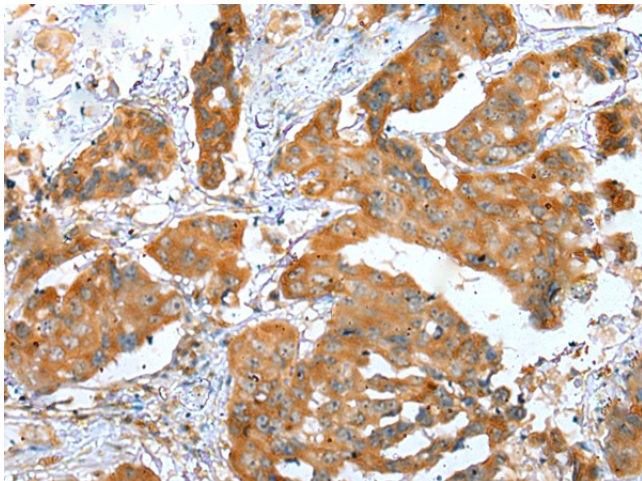
### Endoplasmic reticulum metalloproteinase 1 (ERMP1) Rabbit Polyclonal Antibody

#### Product data:

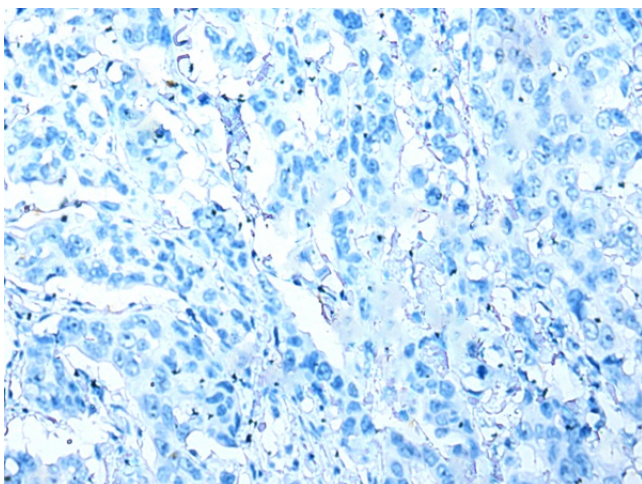
|                       |   |
|-----------------------|---|
| Product Type:         | Primary Antibodies  |
| Applications:         | IHC   |
| Recommended Dilution: | IHC: 25-100<br>Positive control: Human breast cancer<br>Predicted cell location: Cytoplasm                        |
| Reactivity:           | Human, Mouse, Rat   |
| Host:                 | Rabbit  |
| Isotype:              | IgG   |
| Clonality:            | Polyclonal  |
| Immunogen:            | Fusion protein of human ERMP1   |
| Formulation:          | pH7.4 PBS, 0.05% NaN <sub>3</sub> , 40% Glycerol  |
| Concentration:        | lot specific  |
| Purification:         | Antigen affinity purification   |
| Conjugation:          | Unconjugated  |
| Storage:              | Store at -20°C.   |
| Stability:            | 1 year  |
| Gene Name:            | endoplasmic reticulum metalloproteinase 1   |
| Database Link:        | <a href="#">Entrez Gene 79956 Human Q7Z2K6</a>  |
| Background:           | Within the ovary, required for the organization of somatic cells and oocytes into discrete follicular structures. |
| Synonyms:             | bA207C16.3; Felix-ina; FLJ23309; FXNA; KIAA1815   |



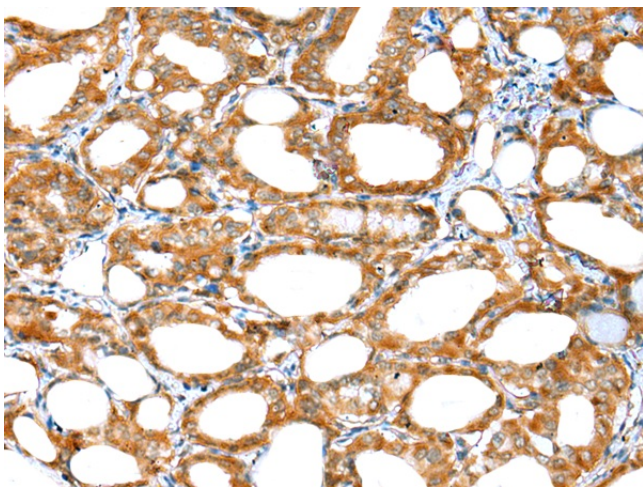
[View online »](#)

**Product images:**

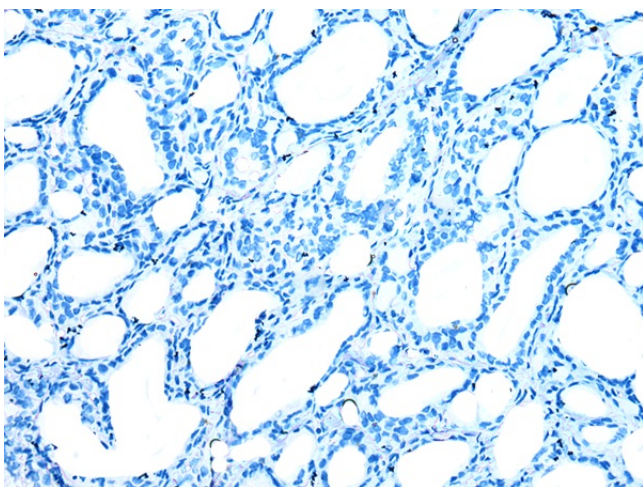
Immunohistochemistry of paraffin-embedded Human breast cancer tissue using TA365225 (ERMP1 Antibody) at dilution 1/30 (Original magnification:  $\times 200$ )



Immunohistochemistry of paraffin-embedded Human breast cancer tissue using TA365225 (ERMP1 Antibody) at dilution 1/30, treated with fusion protein. (Original magnification:  $\times 200$ )



Immunohistochemistry of paraffin-embedded Human thyroid cancer tissue using TA365225 (ERMP1 Antibody) at dilution 1/30 (Original magnification:  $\times 200$ )



Immunohistochemistry of paraffin-embedded Human thyroid cancer tissue using TA365225 (ERMP1 Antibody) at dilution 1/30, treated with fusion protein. (Original magnification:  $\times 200$ )