

Product datasheet for **TA365224**

MRPS18C Rabbit Polyclonal Antibody

Product data:

Product Type:	Primary Antibodies
Applications:	IHC, WB
Recommended Dilution:	WB: 500-2000 WB positive control: 231□Hela□K562 cell and Human bladder carcinoma tissue IHC: 25-100 Positive control: Human breast cancer Predicted cell location: Cytoplasm
Reactivity:	Human, Mouse
Host:	Rabbit
Isotype:	IgG
Clonality:	Polyclonal
Immunogen:	Full length fusion protein
Formulation:	pH7.4 PBS, 0.05% NaN ₃ , 40% Glycerol
Concentration:	lot specific
Purification:	Antigen affinity purification
Conjugation:	Unconjugated
Storage:	Store at -20°C.
Stability:	1 year
Predicted Protein Size:	16 kDa
Gene Name:	mitochondrial ribosomal protein S18C
Database Link:	Entrez Gene 51023 Human Q9Y3D5



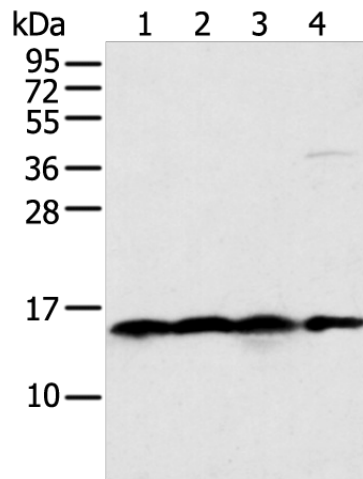
[View online »](#)

Background:

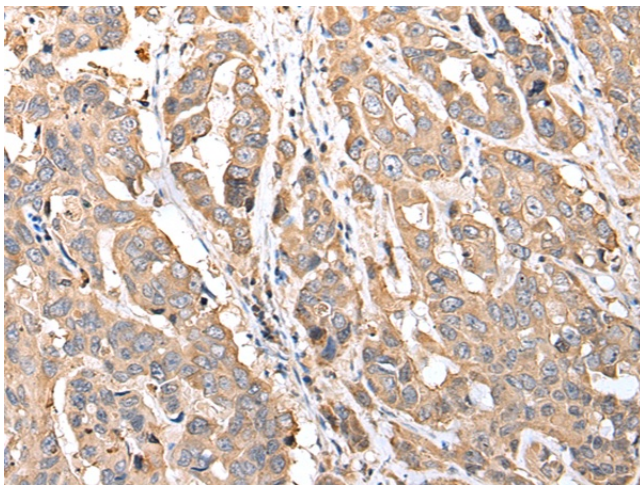
Mammalian mitochondrial ribosomal proteins are encoded by nuclear genes and help in protein synthesis within the mitochondrion. Mitochondrial ribosomes (mitoribosomes) consist of a small 28S subunit and a large 39S subunit. They have an estimated 75% protein to rRNA composition compared to prokaryotic ribosomes, where this ratio is reversed. Another difference between mammalian mitoribosomes and prokaryotic ribosomes is that the latter contain a 5S rRNA. Among different species, the proteins comprising the mitoribosome differ greatly in sequence, and sometimes in biochemical properties, which prevents easy recognition by sequence homology.

Synonyms:

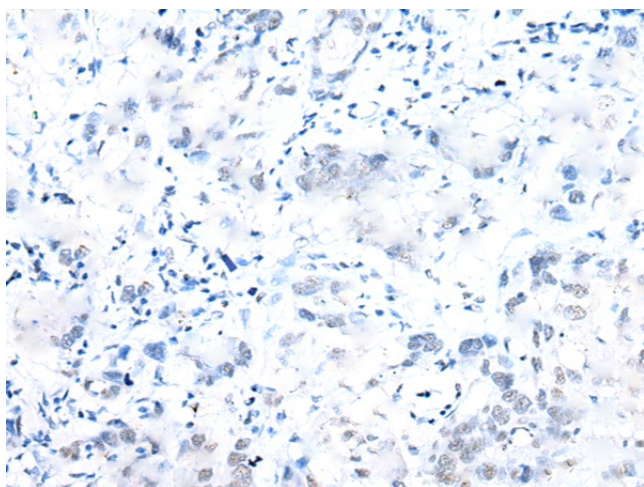
CGI-134; FLJ11146; FLJ22967; MRP-S18-1; MRP-S18-c; MRPS18-1; Mrps18-c; S18mt-c

Product images:


Gel: 12%SDS-PAGE
 Lysate: 40 µg
 Lane 1-4: 231
 HeLa
 K562 cell and Human bladder carcinoma tissue
 Primary antibody: TA365224 (MRPS18C Antibody)
 at dilution 1/400
 Secondary antibody: Goat anti rabbit IgG at
 1/8000 dilution
 Exposure time: 5 seconds



Immunohistochemistry of paraffin-embedded
 Human breast cancer tissue using TA365224
 (MRPS18C Antibody) at dilution 1/20 (Original
 magnification: ×200)



Immunohistochemistry of paraffin-embedded Human breast cancer tissue using TA365224 (MRPS18C Antibody) at dilution 1/20, treated with fusion protein. (Original magnification: ×200)