

## Product datasheet for **TA365222**

### MMGT1 Rabbit Polyclonal Antibody

#### Product data:

Product Type:	Primary Antibodies
Applications:	IHC, WB
Recommended Dilution:	WB: 200-1000 WB positive control: Hela□293T□231 and PC-3 cell IHC: 20-100 Positive control: Human prostate cancer Predicted cell location: Cytoplasm
Reactivity:	Human, Mouse, Rat
Host:	Rabbit
Isotype:	IgG
Clonality:	Polyclonal
Immunogen:	Full length fusion protein
Formulation:	pH7.4 PBS, 0.05% NaN <sub>3</sub> , 40% Glycerol
Concentration:	lot specific
Purification:	Antigen affinity purification
Conjugation:	Unconjugated
Storage:	Store at -20°C.
Stability:	1 year
Predicted Protein Size:	15 kDa
Gene Name:	membrane magnesium transporter 1
Database Link:	<a href="#">Entrez Gene 93380 Human Q8N4V1</a>



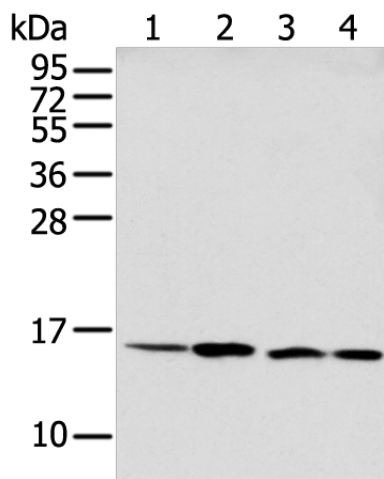
[View online »](#)

**Background:**

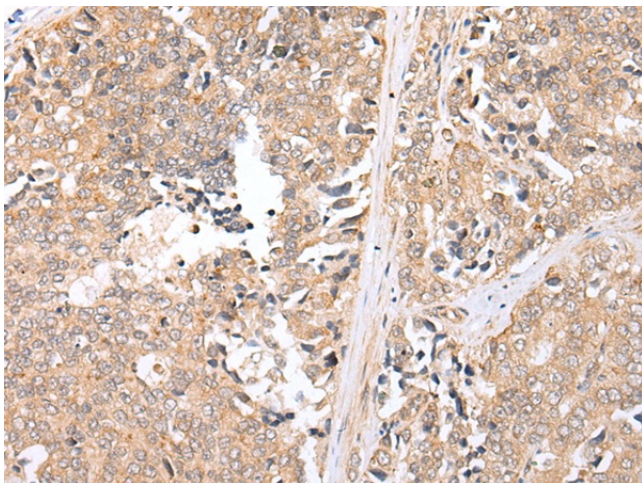
MMGT1 (membrane magnesium transporter 1), also known as TMEM32 (transmembrane protein 32), is a 131 amino acid single-pass type I membrane protein of the endoplasmic reticulum, golgi apparatus and early endosome that belongs to the membrane magnesium transporter family. As such, MMGT1 mediates magnesium transport and exists as two alternatively spliced isoforms. The gene encoding MMGT1 maps to human chromosome Xq26.3. The X and Y chromosomes are the human sex chromosomes. Chromosome X consists of about 153 million base pairs and nearly 1,000 genes. The combination of a X and Y chromosome lead to normal male development while two copies of X lead to normal female development.

**Synonyms:**

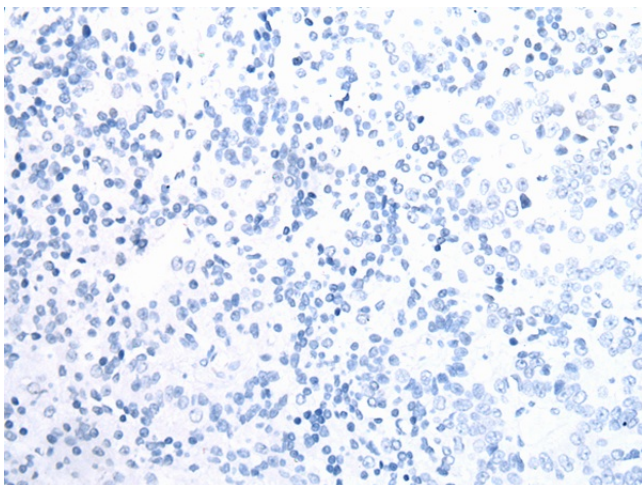
TMEM32

**Product images:**

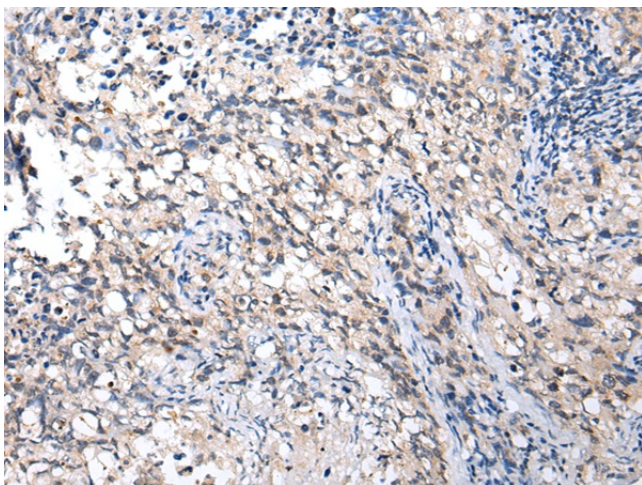
Gel: 12%SDS-PAGE  
Lysate: 40 µg  
Lane 1-4: HeLa  
293T  
231 and PC-3 cell  
Primary antibody: TA365222 (MMGT1 Antibody)  
at dilution 1/250  
Secondary antibody: Goat anti rabbit IgG at  
1/8000 dilution  
Exposure time: 5 seconds



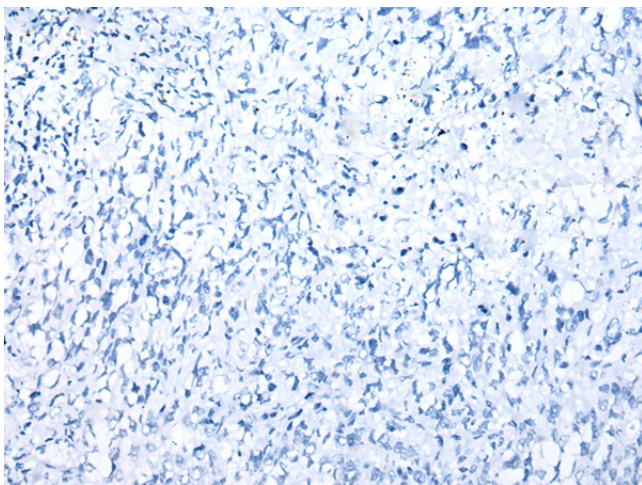
Immunohistochemistry of paraffin-embedded  
Human prostate cancer tissue using TA365222  
(MMGT1 Antibody) at dilution 1/20 (Original  
magnification: ×200)



Immunohistochemistry of paraffin-embedded Human prostate cancer tissue using TA365222 (MMGT1 Antibody) at dilution 1/20, treated with fusion protein. (Original magnification: ×200)



Immunohistochemistry of paraffin-embedded Human lung cancer tissue using TA365222 (MMGT1 Antibody) at dilution 1/20 (Original magnification: ×200)



Immunohistochemistry of paraffin-embedded Human lung cancer tissue using TA365222 (MMGT1 Antibody) at dilution 1/20, treated with fusion protein. (Original magnification: ×200)