

## Product datasheet for TA365220

### RIMKLB Rabbit Polyclonal Antibody

#### Product data:

<b>Product Type:</b>	Primary Antibodies
<b>Applications:</b>	IHC
<b>Recommended Dilution:</b>	IHC: 25-100 Positive control: Human lung cancer Predicted cell location: Cytoplasm
<b>Reactivity:</b>	Human, Mouse
<b>Host:</b>	Rabbit
<b>Isotype:</b>	IgG
<b>Clonality:</b>	Polyclonal
<b>Immunogen:</b>	Full length fusion protein
<b>Formulation:</b>	pH7.4 PBS, 0.05% NaN <sub>3</sub> , 40% Glycerol
<b>Concentration:</b>	lot specific
<b>Purification:</b>	Antigen affinity purification
<b>Conjugation:</b>	Unconjugated
<b>Storage:</b>	Store at -20°C.
<b>Stability:</b>	1 year
<b>Gene Name:</b>	ribosomal modification protein rimK-like family member B
<b>Database Link:</b>	<a href="#">Entrez Gene 57494 Human</a> <a href="#">Q9ULI2</a>

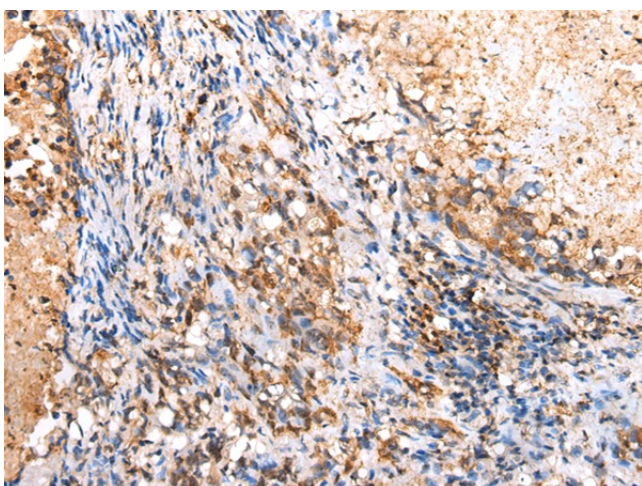


**Background:**

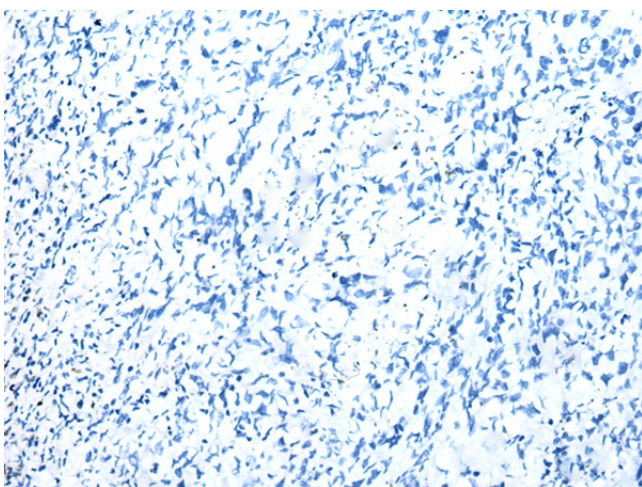
RIMKLB (ribosomal modification protein rimK-like family member B), also known as NAAGS (N-acetyl-aspartyl-glutamate synthetase B), beta-citryl-glutamate synthase B or FAM80B, is a 386 amino acid cytoplasmic protein that belongs to the rimK family. Acting as the catalyst in the synthesis of beta-citryl-glutamate and N-acetyl-aspartyl-glutamate, RIMKLB contains one ATP-grasp domain and exists as two alternatively spliced isoforms. The gene encoding RIMKLB maps to human chromosome 12, which encodes over 1,100 genes and comprises approximately 4.5% of the human genome. Chromosome 12 is associated with a variety of diseases and afflictions, including hypochondrogenesis, achondrogenesis, Kniest dysplasia, Noonan syndrome and trisomy 12p, which causes facial developmental defects and seizure disorders.

**Synonyms:**

FAM80B; KIAA1238

**Product images:**


Immunohistochemistry of paraffin-embedded Human lung cancer tissue using TA365220 (RIMKLB Antibody) at dilution 1/30 (Original magnification: ×200)



Immunohistochemistry of paraffin-embedded Human lung cancer tissue using TA365220 (RIMKLB Antibody) at dilution 1/30, treated with fusion protein. (Original magnification: ×200)