

Product datasheet for **TA365214**

CCBL1 (KYAT1) Rabbit Polyclonal Antibody

Product data:

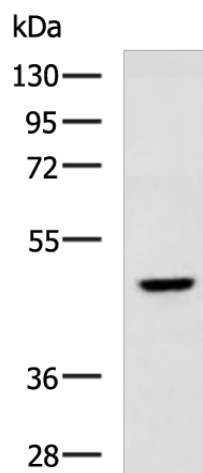
Product Type:	Primary Antibodies
Applications:	WB
Recommended Dilution:	WB: 500-2000 WB positive control: Rat kidney tissue lysate
Reactivity:	Human, Rat
Host:	Rabbit
Isotype:	IgG
Clonality:	Polyclonal
Immunogen:	Fusion protein of human KYAT1
Formulation:	pH7.4 PBS, 0.05% NaN ₃ , 40% Glycerol
Concentration:	lot specific
Purification:	Antigen affinity purification
Conjugation:	Unconjugated
Storage:	Store at -20°C.
Stability:	1 year
Predicted Protein Size:	48 kDa
Gene Name:	kynurenine aminotransferase 1
Database Link:	Entrez Gene 883 Human Q16773

Background: This gene encodes a cytosolic enzyme that is responsible for the metabolism of cysteine conjugates of certain halogenated alkenes and alkanes. This metabolism can form reactive metabolites leading to nephrotoxicity and neurotoxicity. Increased levels of this enzyme have been linked to schizophrenia. Multiple transcript variants that encode different isoforms have been identified for this gene.



[View online »](#)

Product images:



Gel: 8%SDS-PAGE
Lysate: 40 μ g
Lane: Rat kidney tissue lysate
Primary antibody: TA365214 (KYAT1 Antibody) at dilution 1/750
Secondary antibody: Goat anti rabbit IgG at 1/5000 dilution
Exposure time: 3 minutes