

Product datasheet for **TA365203**

DCXR Rabbit Polyclonal Antibody

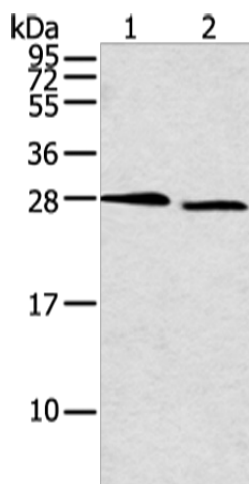
Product data:

Product Type:	Primary Antibodies
Applications:	WB
Recommended Dilution:	WB: 200-1000 WB positive control: 231 and 293T cell
Reactivity:	Human, Mouse, Rat
Host:	Rabbit
Isotype:	IgG
Clonality:	Polyclonal
Immunogen:	Full length fusion protein
Formulation:	pH7.4 PBS, 0.05% NaN ₃ , 40% Glycerol
Concentration:	lot specific
Purification:	Antigen affinity purification
Conjugation:	Unconjugated
Storage:	Store at -20°C.
Stability:	1 year
Predicted Protein Size:	26 kDa
Gene Name:	dicarbonyl/L-xylulose reductase
Database Link:	Entrez Gene 51181 Human Q7Z4W1
Background:	The protein encoded by this gene acts as a homotetramer to catalyze diacetyl reductase and L-xylulose reductase reactions. The encoded protein may play a role in the uronate cycle of glucose metabolism and in the cellular osmoregulation in the proximal renal tubules. Defects in this gene are a cause of pentosuria. Two transcript variants encoding different isoforms have been found for this gene.
Synonyms:	DCR; HCR2; HCRII; KIDCR; P34H; SDR20C1; XR



[View online »](#)

Product images:



Gel: 12%SDS-PAGE

Lysate: 40 μ g

Lane 1-2: 231 and 293T cell

Primary antibody: TA365203 (DCXR Antibody) at dilution 1/300

Secondary antibody: Goat anti rabbit IgG at 1/8000 dilution

Exposure time: 15 seconds