

## Product datasheet for **TA365201S**

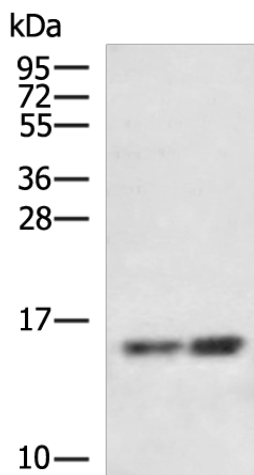
### UQCRH Rabbit Polyclonal Antibody

#### Product data:

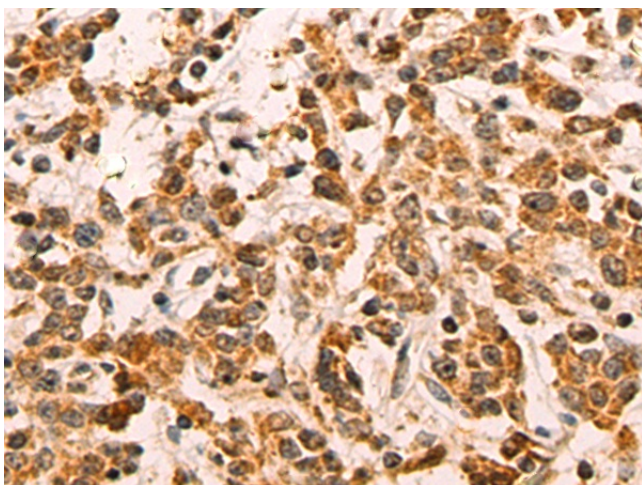
Product Type:	Primary Antibodies
Applications:	IHC, WB
Recommended Dilution:	WB: 200-1000 WB positive control: Rat heart tissue and Mouse heart tissue lysates IHC: 50-200 Positive control: Human colorectal cancer Predicted cell location: Cytoplasm
Reactivity:	Human, Mouse, Rat
Host:	Rabbit
Isotype:	IgG
Clonality:	Polyclonal
Immunogen:	Fusion protein of human UQCRH
Formulation:	pH7.4 PBS, 0.05% NaN <sub>3</sub> , 40% Glycerol
Purification:	Antigen affinity purification
Conjugation:	Unconjugated
Storage:	Store at -20°C.
Stability:	1 year
Predicted Protein Size:	11 kDa
Gene Name:	ubiquinol-cytochrome c reductase hinge protein
Database Link:	<a href="#">Entrez Gene 7388 Human P07919</a>
Background:	This is a component of the ubiquinol-cytochrome c reductase complex (complex III or cytochrome b-c1 complex), which is part of the mitochondrial respiratory chain. This protein may mediate formation of the complex between cytochromes c and c1.
Synonyms:	MGC111572; QCR6



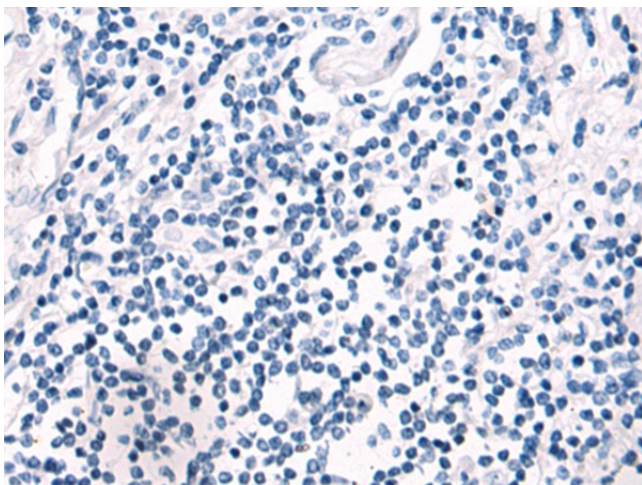
[View online »](#)

**Product images:**

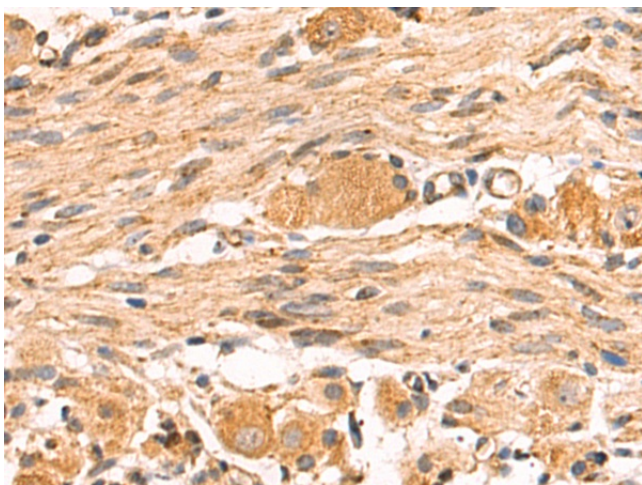
Gel: 12%SDS-PAGE  
Lysate: 40 µg  
Lane 1-2: Rat heart tissue and Mouse heart tissue lysates  
Primary antibody: [TA365201] (UQCRH Antibody) at dilution 1/300  
Secondary antibody: Goat anti rabbit IgG at 1/5000 dilution  
Exposure time: 2 minutes



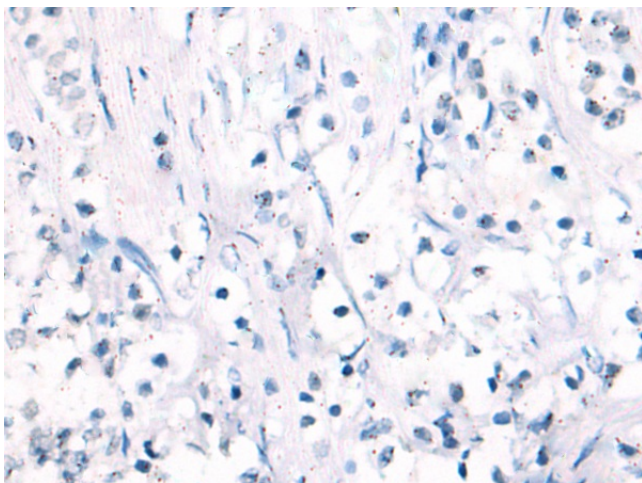
Immunohistochemistry of paraffin-embedded Human colorectal cancer tissue using [TA365201] (UQCRH Antibody) at dilution 1/80 (Original magnification: ×200)



Immunohistochemistry of paraffin-embedded Human colorectal cancer tissue using [TA365201] (UQCRH Antibody) at dilution 1/80, treated with fusion protein. (Original magnification: ×200)



Immunohistochemistry of paraffin-embedded Human prostate cancer tissue using [TA365201] (UQCRH Antibody) at dilution 1/80 (Original magnification: ×200)



Immunohistochemistry of paraffin-embedded Human prostate cancer tissue using [TA365201] (UQCRH Antibody) at dilution 1/80, treated with fusion protein. (Original magnification: ×200)