

## Product datasheet for **TA365199**

### Dynein (DYNLL2) Rabbit Polyclonal Antibody

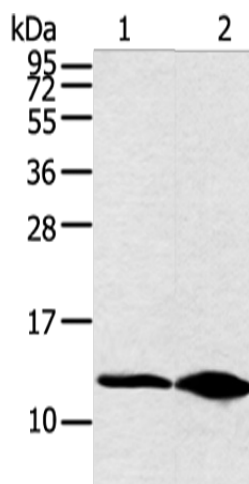
#### Product data:

Product Type:	Primary Antibodies
Applications:	WB
Recommended Dilution:	WB: 500-2000 WB positive control: Hela cell and human fetal brain tissue
Reactivity:	Human, Mouse, Rat
Host:	Rabbit
Isotype:	IgG
Clonality:	Polyclonal
Immunogen:	Full length fusion protein
Formulation:	pH7.4 PBS, 0.05% NaN <sub>3</sub> , 40% Glycerol
Concentration:	lot specific
Purification:	Antigen affinity purification
Conjugation:	Unconjugated
Storage:	Store at -20°C.
Stability:	1 year
Predicted Protein Size:	10 kDa
Gene Name:	dynein light chain LC8-type 2
Database Link:	<a href="#">Entrez Gene 140735 Human Q96FJ2</a>
Background:	Dynein light chain 2, cytoplasmic is a protein that in humans is encoded by the DYNLL2 gene. Acts as one of several non-catalytic accessory components of the cytoplasmic dynein 1 complex that are thought to be involved in linking dynein to cargos and to adapter proteins that regulate dynein function. Cytoplasmic dynein 1 acts as a motor for the intracellular retrograde motility of vesicles and organelles along microtubules.
Synonyms:	DLC2; DNCL1B; MGC17810; RSPH22



[View online »](#)

## Product images:



Gel: 12%SDS-PAGE

Lysate: 40  $\mu$ g

Lane 1-2: HeLa cell and human fetal brain tissue

Primary antibody: TA365199 (DYNLL2 Antibody)  
at dilution 1/250

Secondary antibody: Goat anti rabbit IgG at  
1/8000 dilution

Exposure time: 30 seconds