

## Product datasheet for **TA365197**

### PCID2 Rabbit Polyclonal Antibody

#### Product data:

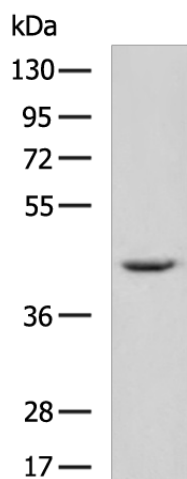
Product Type:	Primary Antibodies
Applications:	IHC, WB
Recommended Dilution:	WB: 500-2000 WB positive control: Mouse heart tissue lysate IHC: 100-200 Positive control: Human liver cancer Predicted cell location: Cytoplasm
Reactivity:	Human, Mouse
Host:	Rabbit
Isotype:	IgG
Clonality:	Polyclonal
Immunogen:	Fusion protein of human PCID2
Formulation:	pH7.4 PBS, 0.05% NaN <sub>3</sub> , 40% Glycerol
Concentration:	lot specific
Purification:	Antigen affinity purification
Conjugation:	Unconjugated
Storage:	Store at -20°C.
Stability:	1 year
Predicted Protein Size:	46 kDa
Gene Name:	PCI domain containing 2
Database Link:	<a href="#">Entrez Gene 55795 Human Q5JVF3</a>

**Background:** This gene encodes a component of the TREX-2 complex (transcription and export complex 2), which regulates mRNA export from the nucleus. This protein regulates expression of Mad2 mitotic arrest deficient-like 1, a cell division checkpoint protein. This protein also interacts with and stabilizes Brca2 (breast cancer 2) protein. Alternative splicing results in multiple transcript variants.

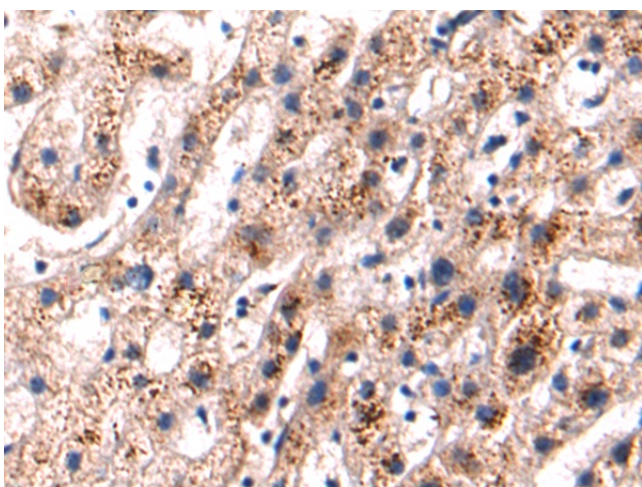
[View online »](#)

**Synonyms:** DKFZp686C20226; F10; FLJ11305; FLJ99362; MGC16774; OTTHUMP00000018756; OTTHUMP00000018760

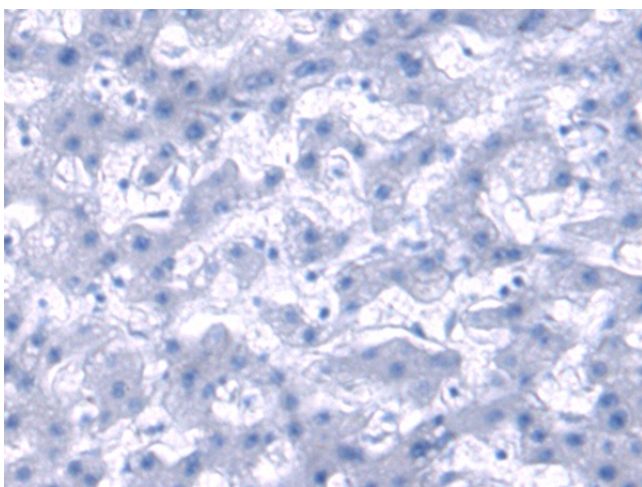
## Product images:



Gel: 8%SDS-PAGE  
Lysate: 40 µg  
Lane: Mouse heart tissue lysate  
Primary antibody: TA365197 (PCID2 Antibody) at dilution 1/550  
Secondary antibody: Goat anti rabbit IgG at 1/5000 dilution  
Exposure time: 20 seconds



Immunohistochemistry of paraffin-embedded Human liver cancer tissue using TA365197 (PCID2 Antibody) at dilution 1/90 (Original magnification: ×200)



Immunohistochemistry of paraffin-embedded Human liver cancer tissue using TA365197 (PCID2 Antibody) at dilution 1/90, treated with fusion protein. (Original magnification: ×200)