

Product datasheet for **TA365190S**

NDUFB3 Rabbit Polyclonal Antibody

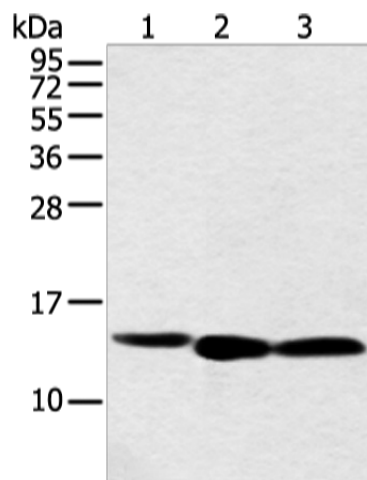
Product data:

Product Type:	Primary Antibodies
Applications:	IHC, WB
Recommended Dilution:	WB: 500-2000 WB positive control: Hela, PC3 and 293T cell IHC: 25-100 Positive control: Human liver cancer Predicted cell location: Cytoplasm
Reactivity:	Human
Host:	Rabbit
Isotype:	IgG
Clonality:	Polyclonal
Immunogen:	Full length fusion protein
Formulation:	pH7.4 PBS, 0.05% NaN ₃ , 40% Glycerol
Purification:	Antigen affinity purification
Conjugation:	Unconjugated
Storage:	Store at -20°C.
Stability:	1 year
Predicted Protein Size:	11 kDa
Gene Name:	NADH:ubiquinone oxidoreductase subunit B3
Database Link:	Entrez Gene 4709 Human O43676
Background:	This gene encodes an accessory subunit of the mitochondrial membrane respiratory chain NADH dehydrogenase (Complex I) which is the first enzyme in the electron transport chain of mitochondria. This protein localizes to the inner membrane of the mitochondrion as a single-pass membrane protein. Mutations in this gene contribute to mitochondrial complex 1 deficiency.
Synonyms:	B12; CI-B12; OTTHUMP00000206488; OTTHUMP00000206489

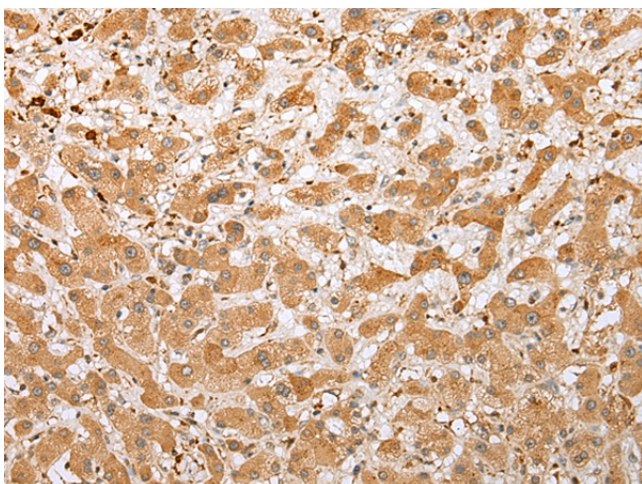


[View online »](#)

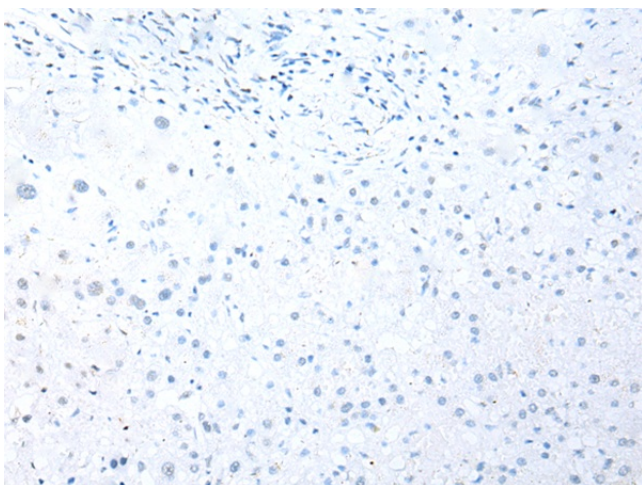
Product images:



Gel: 12%SDS-PAGE
Lysate: 40 μ g
Lane 1-3: HeLa
PC3 and 293T cell
Primary antibody: [TA365190] (NDUFB3 Antibody)
at dilution 1/500
Secondary antibody: Goat anti rabbit IgG at
1/8000 dilution
Exposure time: 30 seconds



Immunohistochemistry of paraffin-embedded
Human liver cancer tissue using [TA365190]
(NDUFB3 Antibody) at dilution 1/20 (Original
magnification: \times 200)



Immunohistochemistry of paraffin-embedded
Human liver cancer tissue using [TA365190]
(NDUFB3 Antibody) at dilution 1/20, treated with
fusion protein. (Original magnification: \times 200)