

## Product datasheet for **TA365189S**

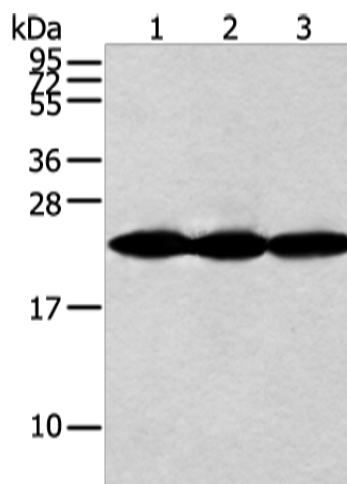
### NDUFB10 Rabbit Polyclonal Antibody

#### Product data:

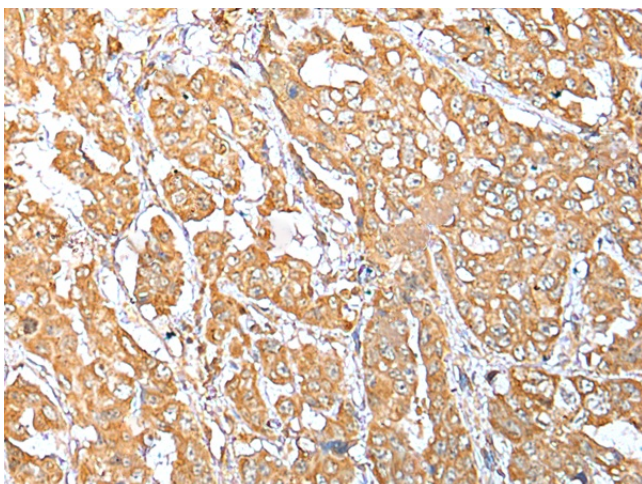
|                         |   |
|-------------------------|---|
| Product Type:           | Primary Antibodies  |
| Applications:           | IHC, WB   |
| Recommended Dilution:   | WB: 1000-5000<br>WB positive control: Jurkat and A549 cell, human fetal muscle tissue<br>IHC: 25-100<br>Positive control: Human breast cancer<br>Predicted cell location: Cytoplasm   |
| Reactivity:             | Human   |
| Host:                   | Rabbit  |
| Isotype:                | IgG   |
| Clonality:              | Polyclonal  |
| Immunogen:              | Full length fusion protein  |
| Formulation:            | pH7.4 PBS, 0.05% NaN <sub>3</sub> , 40% Glycerol  |
| Purification:           | Antigen affinity purification   |
| Conjugation:            | Unconjugated  |
| Storage:                | Store at -20°C.   |
| Stability:              | 1 year  |
| Predicted Protein Size: | 21 kDa  |
| Gene Name:              | NADH:ubiquinone oxidoreductase subunit B10  |
| Database Link:          | <a href="#">Entrez Gene 4716 Human</a><br><a href="#">O96000</a>  |
| Background:             | NADH dehydrogenase [ubiquinone] 1 beta subcomplex subunit 10 is an enzyme that in humans is encoded by theNDUFB10 gene. NADH dehydrogenase (ubiquinone) 1 beta subcomplex subunit 10 is an accessory subunit of the NADH dehydrogenase (ubiquinone) complex, located in the mitochondrial inner membrane. It is also known as Complex I and is the largest of the five complexes of the electron transport chain. |
| Synonyms:               | CI-PDSW; PDSW   |



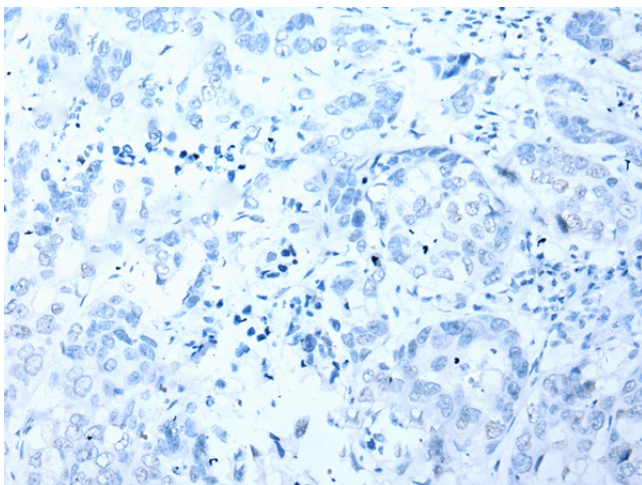
[View online »](#)

**Product images:**

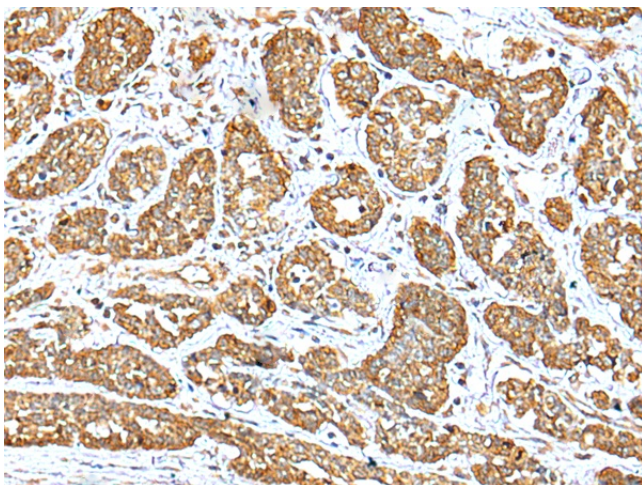
Gel: 12%SDS-PAGE  
Lysate: 40 µg  
Lane 1-3: Jurkat and A549 cell  
human fetal muscle tissue  
Primary antibody: [TA365189] (NDUFB10  
Antibody) at dilution 1/500  
Secondary antibody: Goat anti rabbit IgG at  
1/8000 dilution  
Exposure time: 10 seconds



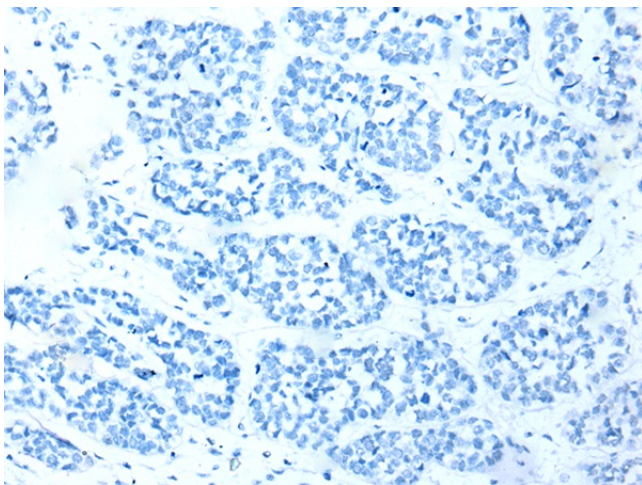
Immunohistochemistry of paraffin-embedded  
Human breast cancer tissue using [TA365189]  
(NDUFB10 Antibody) at dilution 1/35 (Original  
magnification: ×200)



Immunohistochemistry of paraffin-embedded Human breast cancer tissue using [TA365189] (NDUFB10 Antibody) at dilution 1/35, treated with fusion protein. (Original magnification:  $\times 200$ )



Immunohistochemistry of paraffin-embedded Human esophagus cancer tissue using [TA365189] (NDUFB10 Antibody) at dilution 1/35 (Original magnification:  $\times 200$ )



Immunohistochemistry of paraffin-embedded Human esophagus cancer tissue using [TA365189] (NDUFB10 Antibody) at dilution 1/35, treated with fusion protein. (Original magnification:  $\times 200$ )