

## Product datasheet for **TA365189**

### NDUFB10 Rabbit Polyclonal Antibody

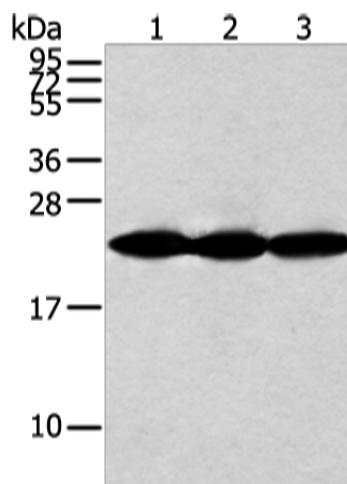
#### Product data:

Product Type:	Primary Antibodies
Applications:	IHC, WB
Recommended Dilution:	WB: 1000-5000 WB positive control: Jurkat and A549 cell, human fetal muscle tissue IHC: 25-100 Positive control: Human breast cancer Predicted cell location: Cytoplasm
Reactivity:	Human
Host:	Rabbit
Isotype:	IgG
Clonality:	Polyclonal
Immunogen:	Full length fusion protein
Formulation:	pH7.4 PBS, 0.05% NaN <sub>3</sub> , 40% Glycerol
Concentration:	lot specific
Purification:	Antigen affinity purification
Conjugation:	Unconjugated
Storage:	Store at -20°C.
Stability:	1 year
Predicted Protein Size:	21 kDa
Gene Name:	NADH:ubiquinone oxidoreductase subunit B10
Database Link:	<a href="#">Entrez Gene 4716 Human</a> <a href="#">O96000</a>
Background:	NADH dehydrogenase [ubiquinone] 1 beta subcomplex subunit 10 is an enzyme that in humans is encoded by theNDUFB10 gene. NADH dehydrogenase (ubiquinone) 1 beta subcomplex subunit 10 is an accessory subunit of the NADH dehydrogenase (ubiquinone) complex, located in the mitochondrial inner membrane. It is also known as Complex I and is the largest of the five complexes of the electron transport chain.
Synonyms:	CI-PDSW; PDSW

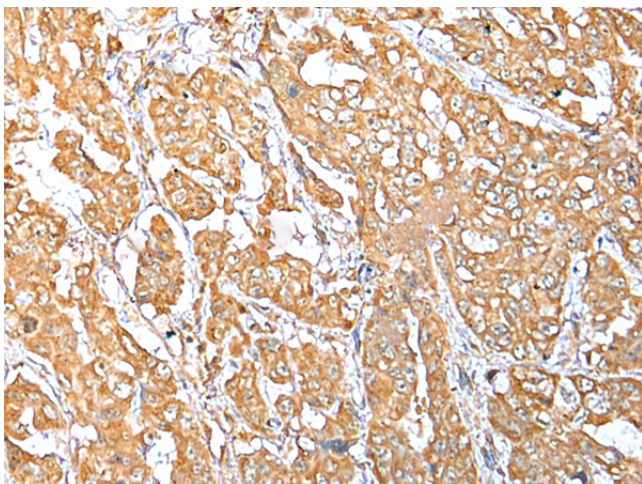


[View online »](#)

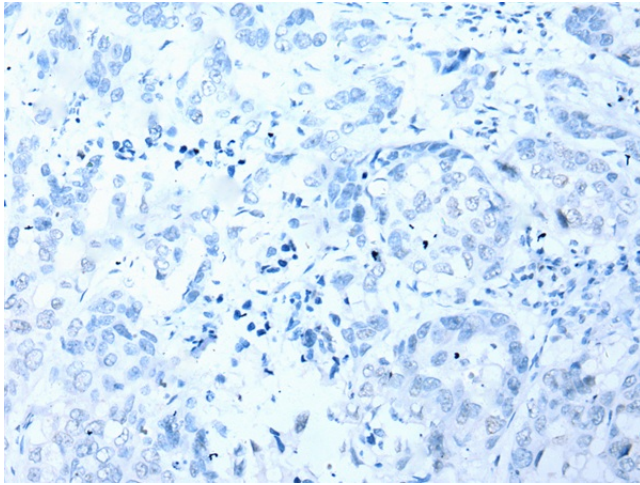
## Product images:



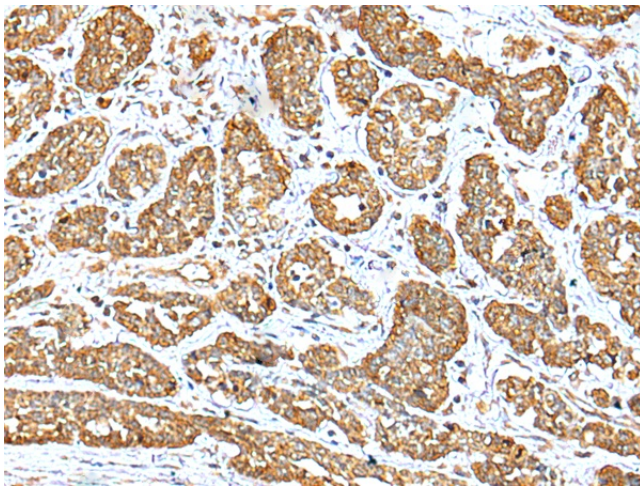
Gel: 12%SDS-PAGE  
Lysate: 40 µg  
Lane 1-3: Jurkat and A549 cell  
human fetal muscle tissue  
Primary antibody: TA365189 (NDUFB10 Antibody)  
at dilution 1/500  
Secondary antibody: Goat anti rabbit IgG at  
1/8000 dilution  
Exposure time: 10 seconds



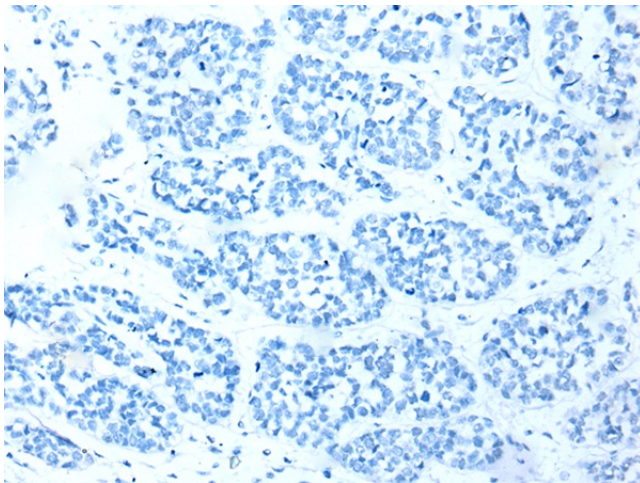
Immunohistochemistry of paraffin-embedded  
Human breast cancer tissue using TA365189  
(NDUFB10 Antibody) at dilution 1/35 (Original  
magnification: ×200)



Immunohistochemistry of paraffin-embedded Human breast cancer tissue using TA365189 (NDUFB10 Antibody) at dilution 1/35, treated with fusion protein. (Original magnification:  $\times 200$ )



Immunohistochemistry of paraffin-embedded Human esophagus cancer tissue using TA365189 (NDUFB10 Antibody) at dilution 1/35 (Original magnification:  $\times 200$ )



Immunohistochemistry of paraffin-embedded Human esophagus cancer tissue using TA365189 (NDUFB10 Antibody) at dilution 1/35, treated with fusion protein. (Original magnification:  $\times 200$ )