

## Product datasheet for **TA365188**

### NDUFB11 Rabbit Polyclonal Antibody

#### Product data:

Product Type:	Primary Antibodies
Applications:	IHC, WB
Recommended Dilution:	WB: 1000-5000 WB positive control: Mouse brain tissue□Mouse liver tissue□231 cell□K562 cell□A431 cell lysates IHC: 50-300 Positive control: Human lung cancer Predicted cell location: Cytoplasm
Reactivity:	Human, Mouse
Host:	Rabbit
Isotype:	IgG
Clonality:	Polyclonal
Immunogen:	Full length fusion protein
Formulation:	pH7.4 PBS, 0.05% NaN <sub>3</sub> , 40% Glycerol
Concentration:	lot specific
Purification:	Antigen affinity purification
Conjugation:	Unconjugated
Storage:	Store at -20°C.
Stability:	1 year
Predicted Protein Size:	17 kDa
Gene Name:	NADH:ubiquinone oxidoreductase subunit B11
Database Link:	<a href="#">Entrez Gene 54539 Human Q9NX14</a>



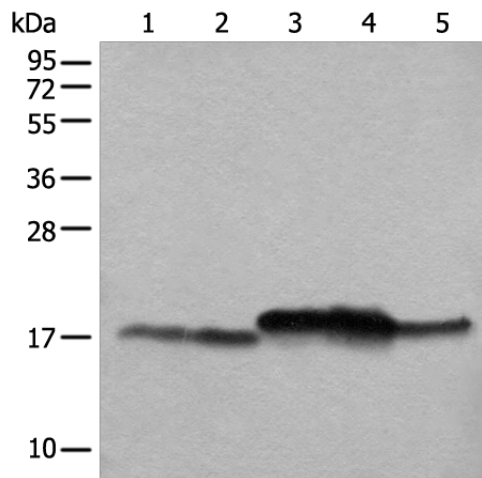
[View online »](#)

**Background:**

Complex 1 (also known as NADH dehydrogenase) of the electron transport chain (respiratory chain) is an enzymatic complex that catalyzes the transfer of electrons from NADH to ubiquinone. Free energy from the reaction is conserved in the transfer of protons into the intermembrane space to create an electrochemical proton gradient, a driving force for ATP synthesis. Complex 1 is a complicated, multi-protein, L-shaped complex composed of at least 45 different subunits and located in the mitochondrial inner membrane. NDUFB11 (NADH dehydrogenase (ubiquinone) 1 beta subcomplex subunit 11), also known as ESSS, Np15, Np17.3 (neuronal protein 17.3) or p17.3, is a hydrophobic transmembrane protein belonging to the Complex I NDUFB11 subunit family. Ubiquitously expressed, NDUFB11 localizes to the inner membrane of the mitochondrion and functions as an accessory subunit of Complex I. The cAMP-dependent phosphorylation of NDUFB11 is important for the regulation of Complex I activity.

**Synonyms:**

CI-ESSS; ESSS; FLJ20494; MGC111182; Np15; NP17.3; P17.3

**Product images:**

Gel: 12%SDS-PAGE

Lysate: 40 µg

Lane 1-5: Mouse brain tissue

Mouse liver tissue

231 cell

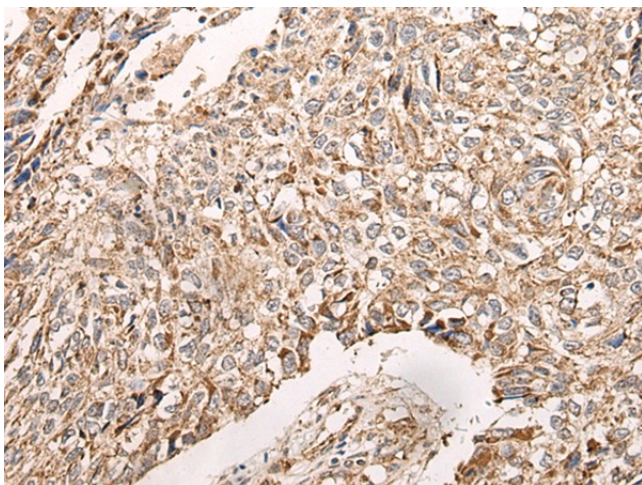
K562 cell

A431 cell lysates

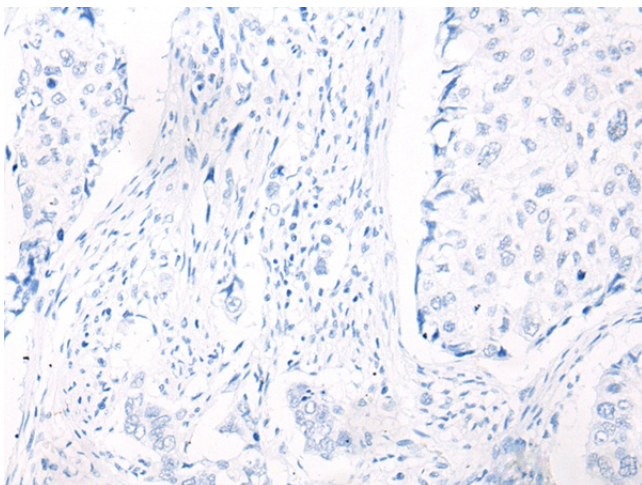
Primary antibody: TA365188 (NDUFB11 Antibody)  
at dilution 1/1000

Secondary antibody: Goat anti rabbit IgG at  
1/8000 dilution

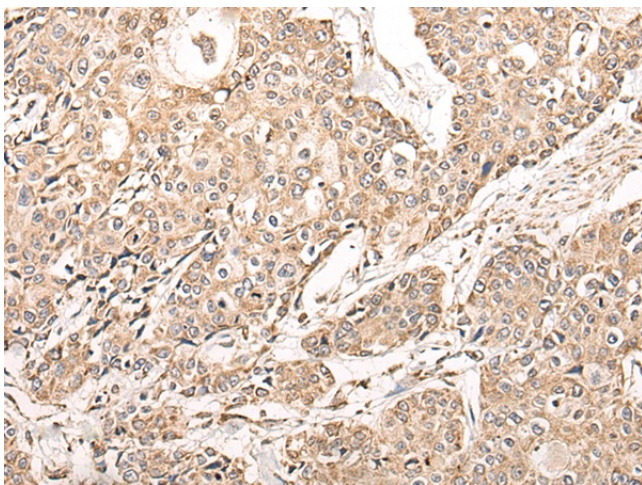
Exposure time: 10 seconds



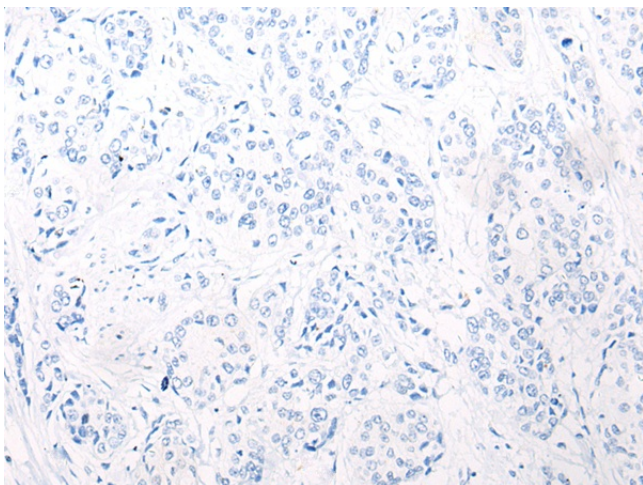
Immunohistochemistry of paraffin-embedded Human lung cancer tissue using TA365188 (NDUFB11 Antibody) at dilution 1/95 (Original magnification:  $\times 200$ )



Immunohistochemistry of paraffin-embedded Human lung cancer tissue using TA365188 (NDUFB11 Antibody) at dilution 1/95, treated with fusion protein. (Original magnification:  $\times 200$ )



Immunohistochemistry of paraffin-embedded Human prostate cancer tissue using TA365188 (NDUFB11 Antibody) at dilution 1/95 (Original magnification:  $\times 200$ )



Immunohistochemistry of paraffin-embedded Human prostate cancer tissue using TA365188 (NDUFB11 Antibody) at dilution 1/95, treated with fusion protein. (Original magnification:  $\times 200$ )