

Product datasheet for **TA365186S**

ZCCHC9 Rabbit Polyclonal Antibody

Product data:

Product Type:	Primary Antibodies
Applications:	IHC
Recommended Dilution:	IHC: 25-100 Positive control: Human brain Predicted cell location: Cytoplasm
Reactivity:	Human, Mouse
Host:	Rabbit
Isotype:	IgG
Clonality:	Polyclonal
Immunogen:	Fusion protein of human ZCCHC9
Formulation:	pH7.4 PBS, 0.05% NaN ₃ , 40% Glycerol
Purification:	Antigen affinity purification
Conjugation:	Unconjugated
Storage:	Store at -20°C.
Stability:	1 year
Gene Name:	zinc finger CCHC-type containing 9
Database Link:	Entrez Gene 84240 Human Q8N567



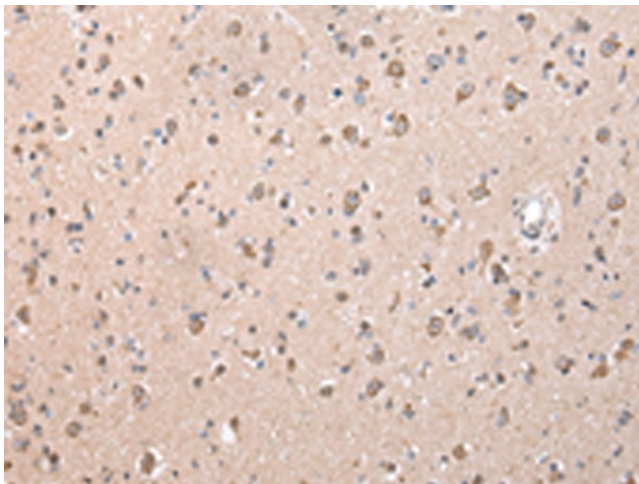
[View online »](#)

Background:

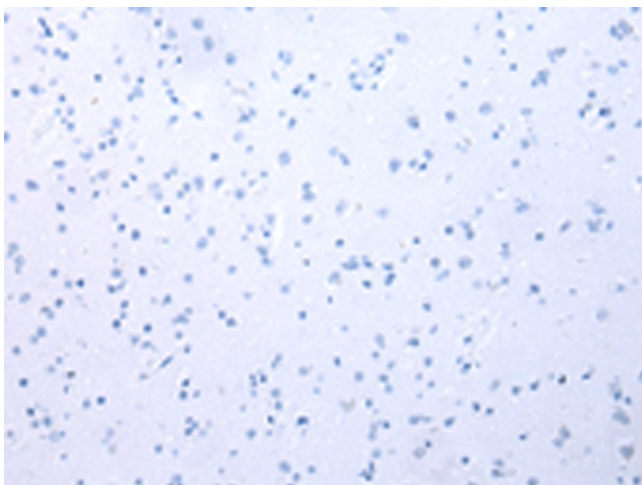
Zinc-finger proteins contain DNA-binding domains and have a wide variety of functions, most of which encompass some form of transcriptional activation or repression. ZCCHC9 (zinc finger, CCHC domain containing 9) is a 271 amino acid protein that contains four CCHC-type zinc finger, suggesting a role in transcriptional regulation. The gene encoding ZCCHC9 maps to human chromosome 5, which contains 181 million base pairs and comprises nearly 6% of the human genome. Chromosome 5 is associated with Cockayne syndrome through the ERCC8 gene and familial adenomatous polyposis through the adenomatous polyposis coli (APC) tumor suppressor gene. Treacher Collins syndrome is also chromosome 5-associated and is caused by insertions or deletions within the TCOF1 gene. Deletion of the p arm of chromosome 5 leads to Cri du chat syndrome, while deletion of the q arm or of chromosome 5 altogether is common in therapy-related acute myelogenous leukemias and myelodysplastic syndrome.

Synonyms:

DKFZp761J139; OTTHUMP00000147543

Product images:


Immunohistochemistry of paraffin-embedded Human brain tissue using [TA365186] (ZCCHC9 Antibody) at dilution 1/25 (Original magnification: ×200)



Immunohistochemistry of paraffin-embedded Human brain tissue using [TA365186] (ZCCHC9 Antibody) at dilution 1/25, treated with fusion protein. (Original magnification: ×200)