

Product datasheet for **TA365182**

ZNHIT1 Rabbit Polyclonal Antibody

Product data:

Product Type:	Primary Antibodies
Applications:	IHC
Recommended Dilution:	IHC: 25-100 Positive control: Human thyroid cancer Predicted cell location: Cytoplasm and Nucleus
Reactivity:	Human, Mouse
Host:	Rabbit
Isotype:	IgG
Clonality:	Polyclonal
Immunogen:	Full length fusion protein
Formulation:	pH7.4 PBS, 0.05% NaN ₃ , 40% Glycerol
Concentration:	lot specific
Purification:	Antigen affinity purification
Conjugation:	Unconjugated
Storage:	Store at -20°C.
Stability:	1 year
Gene Name:	zinc finger HIT-type containing 1
Database Link:	Entrez Gene 10467 Human O43257



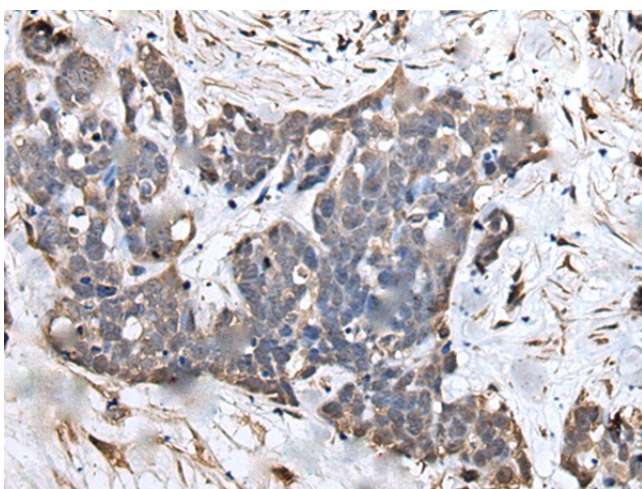
[View online »](#)

Background:

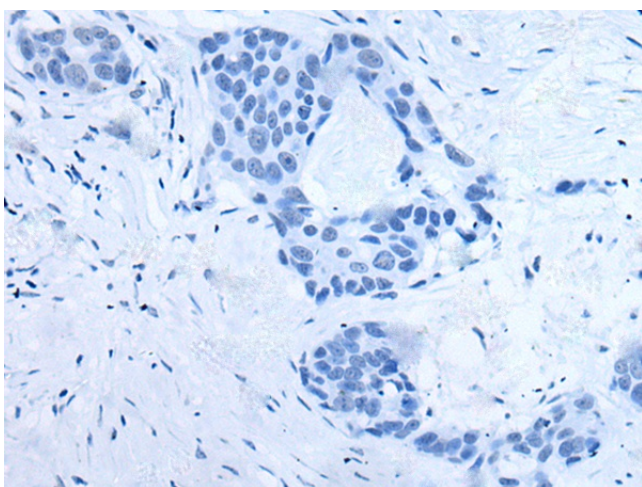
ZNHIT1 (zinc finger, HIT-type containing 1), also known as CG1I (cyclin-G1-binding protein 1), p18 hamlet or ZNFN4A1 (zinc finger protein subfamily 4A member 1), is a 154 amino acid protein that plays a role in the induction of p53-mediated apoptosis. A member of the ZNHIT1 family, ZNHIT1 contains one HIT-type zinc finger and interacts with p38. ZNHIT1 undergoes post-translational phosphorylation and is encoded by a gene that maps to human chromosome 7, which houses over 1,000 genes and comprises nearly 5% of the human genome. Chromosome 7 has been linked to Osteogenesis imperfecta, Pendred syndrome, Lissencephaly, Citrullinemia and Shwachman-Diamond syndrome. The deletion of a portion of the q arm of chromosome 7 is associated with Williams-Beuren syndrome, a condition characterized by mild mental retardation, an unusual comfirt and friendliness with strangers and an elfin appearance.

Synonyms:

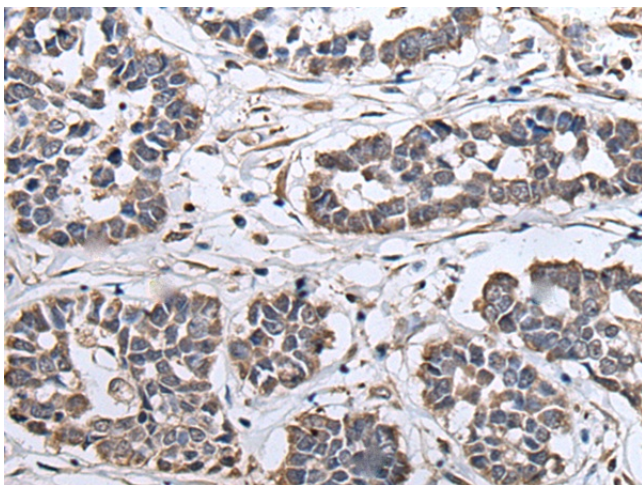
CG1I; CGBP1; H_DJ0747G18.14; p18Hamlet; ZNFN4A1

Product images:

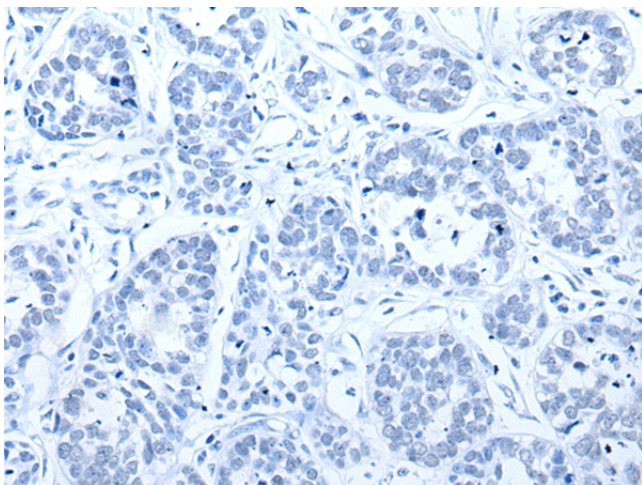
Immunohistochemistry of paraffin-embedded Human thyroid cancer tissue using TA365182 (ZNHIT1 Antibody) at dilution 1/30 (Original magnification: x200)



Immunohistochemistry of paraffin-embedded Human thyroid cancer tissue using TA365182 (ZNHIT1 Antibody) at dilution 1/30, treated with fusion protein. (Original magnification: x200)



Immunohistochemistry of paraffin-embedded Human esophagus cancer tissue using TA365182 (ZNHIT1 Antibody) at dilution 1/30 (Original magnification: $\times 200$)



Immunohistochemistry of paraffin-embedded Human esophagus cancer tissue using TA365182 (ZNHIT1 Antibody) at dilution 1/30, treated with fusion protein. (Original magnification: $\times 200$)