

## Product datasheet for **TA365176**

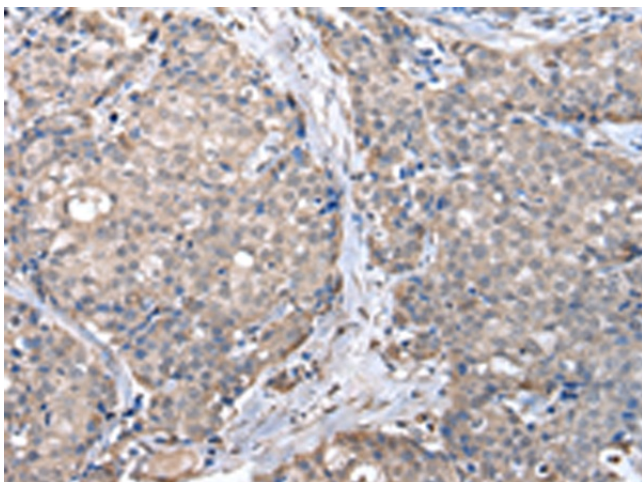
### ZFP2 Rabbit Polyclonal Antibody

#### Product data:

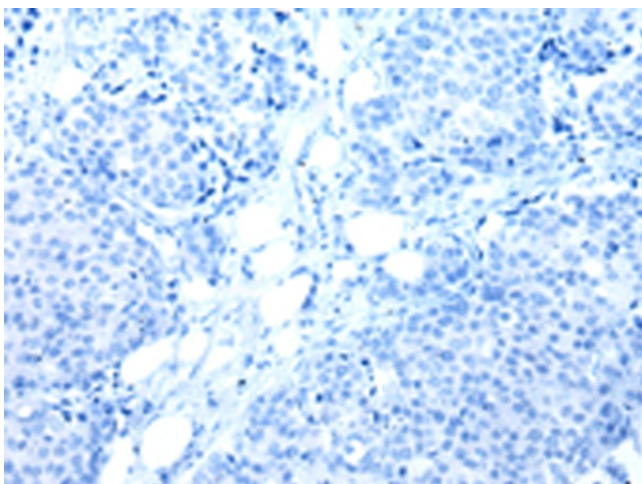
Product Type:	Primary Antibodies
Applications:	IHC
Recommended Dilution:	IHC: 25-100 Positive control: Human breast cancer Predicted cell location: Cytoplasm and Nucleus
Reactivity:	Human, Mouse
Host:	Rabbit
Isotype:	IgG
Clonality:	Polyclonal
Immunogen:	Fusion protein of human ZFP2
Formulation:	pH7.4 PBS, 0.05% NaN <sub>3</sub> , 40% Glycerol
Concentration:	lot specific
Purification:	Antigen affinity purification
Conjugation:	Unconjugated
Storage:	Store at -20°C.
Stability:	1 year
Gene Name:	ZFP2 zinc finger protein
Database Link:	<a href="#">Entrez Gene 80108 Human Q6ZN57</a>
Background:	Probable transcription factor involved in neuronal differentiation and/or phenotypic maintenance.
Synonyms:	FLJ21628; Zfp-2; ZNF751



[View online »](#)

**Product images:**

Immunohistochemistry of paraffin-embedded Human breast cancer tissue using TA365176 (ZFP2 Antibody) at dilution 1/20 (Original magnification:  $\times 200$ )



Immunohistochemistry of paraffin-embedded Human breast cancer tissue using TA365176 (ZFP2 Antibody) at dilution 1/20, treated with fusion protein. (Original magnification:  $\times 200$ )