

Product datasheet for **TA365171S**

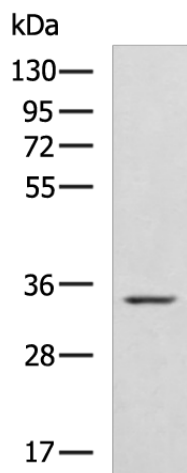
ZFAND1 Rabbit Polyclonal Antibody

Product data:

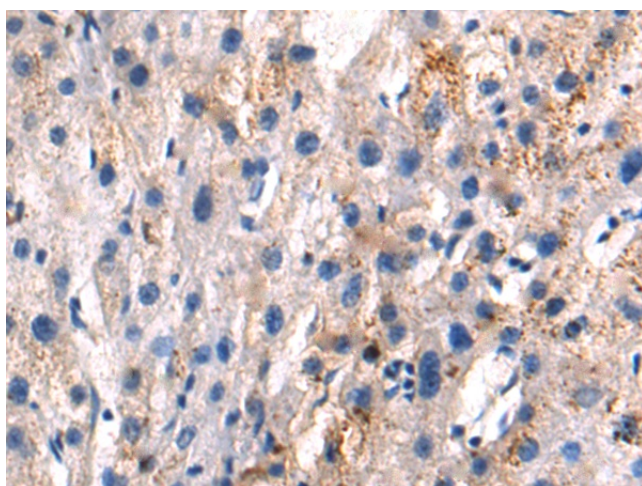
| | |
|-------------------------|--|
| Product Type: | Primary Antibodies |
| Applications: | IHC, WB |
| Recommended Dilution: | WB: 500-2000 WB positive control: Mouse brain tissue lysate IHC: 50-200 Positive control: Human liver cancer Predicted cell location: Cytoplasm |
| Reactivity: | Human, Mouse |
| Host: | Rabbit |
| Isotype: | IgG |
| Clonality: | Polyclonal |
| Immunogen: | Fusion protein of human ZFAND1 |
| Formulation: | pH7.4 PBS, 0.05% NaN ₃ , 40% Glycerol |
| Purification: | Antigen affinity purification |
| Conjugation: | Unconjugated |
| Storage: | Store at -20°C. |
| Stability: | 1 year |
| Predicted Protein Size: | 31 kDa |
| Gene Name: | zinc finger AN1-type containing 1 |
| Database Link: | Entrez Gene 79752 Human Q8TCF1 |
| Background: | Plays a role in the regulation of cytoplasmic stress granules (SGs) turnover. SGs are dynamic and transient cytoplasmic ribonucleoprotein assemblies important for cellular protein homeostasis when protein production is suspended after acute exogenous stress. Associates with SGs and is involved in the efficient and specific arsenite-induced clearance process of SGs through the recruitment of the ubiquitin-selective ATPase VCP and the 26S proteasome. |
| Synonyms: | FLJ14007 |



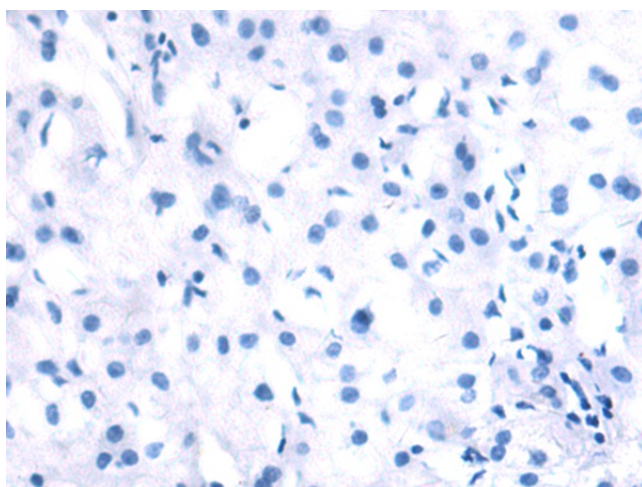
[View online »](#)

Product images:


Gel: 8%SDS-PAGE
 Lysate: 40 μ g
 Lane: Mouse brain tissue lysate
 Primary antibody: [TA365171] (ZFAND1 Antibody)
 at dilution 1/1200
 Secondary antibody: Goat anti rabbit IgG at
 1/5000 dilution
 Exposure time: 30 seconds



Immunohistochemistry of paraffin-embedded
 Human liver cancer tissue using [TA365171]
 (ZFAND1 Antibody) at dilution 1/80 (Original
 magnification: \times 200)



Immunohistochemistry of paraffin-embedded
 Human liver cancer tissue using [TA365171]
 (ZFAND1 Antibody) at dilution 1/80, treated with
 fusion protein. (Original magnification: \times 200)