

## Product datasheet for **TA365169S**

### ZCWCC1 (MORC2) Rabbit Polyclonal Antibody

#### Product data:

Product Type:	Primary Antibodies
Applications:	IHC, WB
Recommended Dilution:	WB: 500-2000 WB positive control: A172, HeLa, 293T and 231 cell lysates IHC: 25-100 Positive control: Human thyroid cancer Predicted cell location: Nucleus
Reactivity:	Human
Host:	Rabbit
Isotype:	IgG
Clonality:	Polyclonal
Immunogen:	Fusion protein of human MORC2
Formulation:	pH7.4 PBS, 0.05% NaN <sub>3</sub> , 40% Glycerol
Purification:	Antigen affinity purification
Conjugation:	Unconjugated
Storage:	Store at -20°C.
Stability:	1 year
Predicted Protein Size:	118 kDa
Gene Name:	MORC family CW-type zinc finger 2
Database Link:	<a href="#">Entrez Gene 22880 Human Q9Y6X9</a>



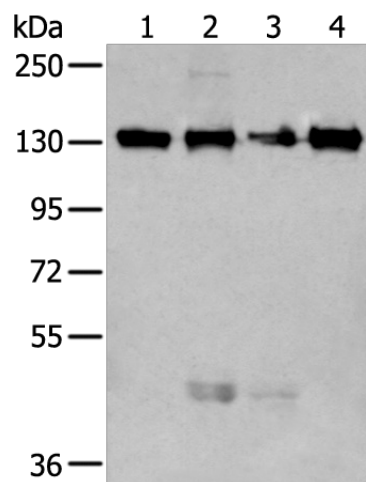
[View online »](#)

**Background:**

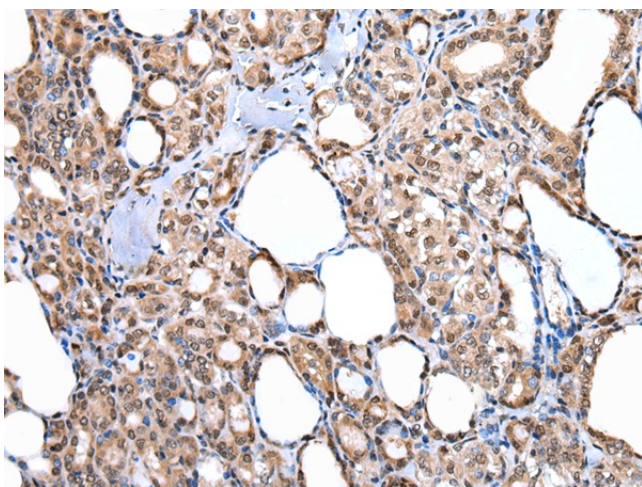
The CW domain is a structural module found in many vertebrate, parasitic and plant proteins. It consists of a mononuclear four-cysteine zinc-finger domain that plays a role in DNA binding, chromatin methylation and early embryonic development. ZCWCC1 (zinc finger CW-type coiled-coil domain protein 1), also known as MORC2 (MORC family CW-type zinc finger protein 2) or ZCW3, is a 1,032 amino acid protein that contains one CW-type zinc finger domain. ZCWCC1 is located on chromosome 22 and is ubiquitously expressed with highest expression in pancreas, smooth muscle and testis. Expression of ZCWCC1 is upregulated in hypoxia, a pathological condition characterized by an inadequate supply of oxygen in the blood.

**Synonyms:**

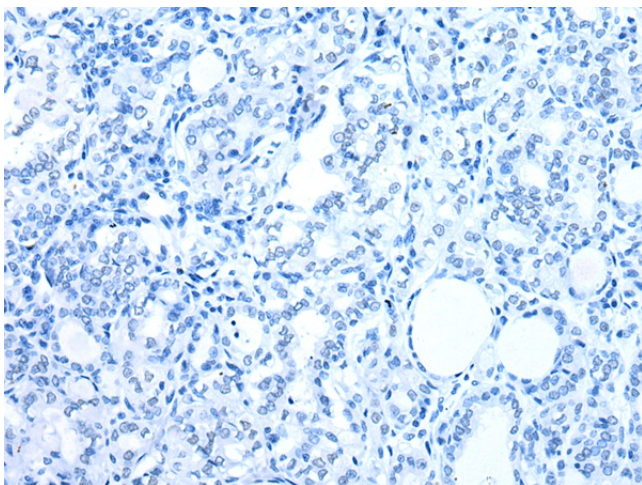
AC004542.C22.1; KIAA0852; ZCW3; ZCWCC1

**Product images:**

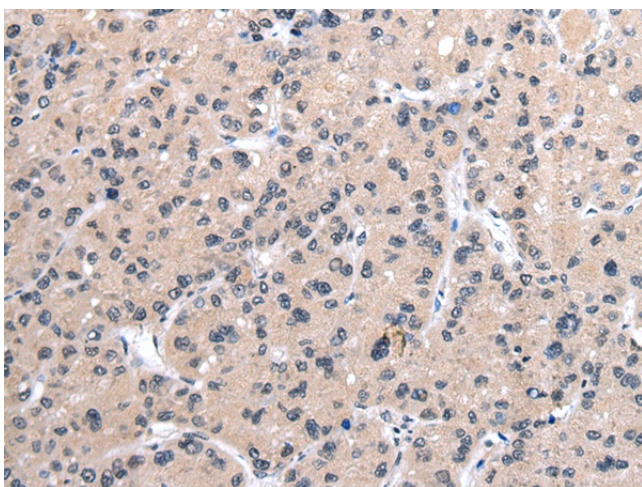
Gel: 6%SDS-PAGE  
Lysate: 40 µg  
Lane 1-4: A172  
Hela  
293T and 231 cell lysates  
Primary antibody: [TA365169] (MORC2 Antibody)  
at dilution 1/250  
Secondary antibody: Goat anti rabbit IgG at  
1/8000 dilution  
Exposure time: 20 seconds



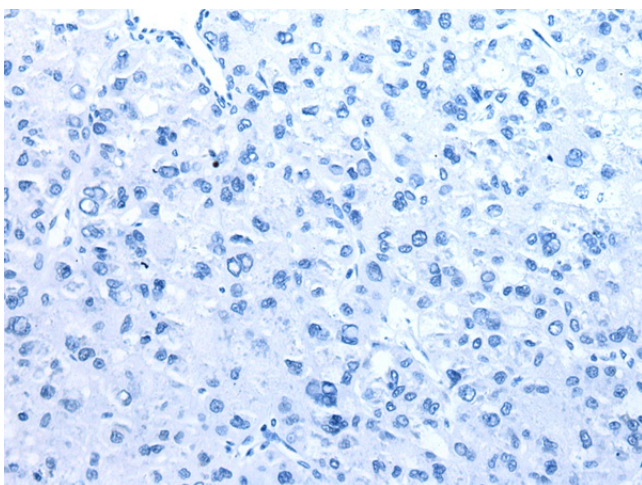
Immunohistochemistry of paraffin-embedded  
Human thyroid cancer tissue using [TA365169]  
(MORC2 Antibody) at dilution 1/20 (Original  
magnification: ×200)



Immunohistochemistry of paraffin-embedded Human thyroid cancer tissue using [TA365169] (MORC2 Antibody) at dilution 1/20, treated with fusion protein. (Original magnification: ×200)



Immunohistochemistry of paraffin-embedded Human liver cancer tissue using [TA365169] (MORC2 Antibody) at dilution 1/20 (Original magnification: ×200)



Immunohistochemistry of paraffin-embedded Human liver cancer tissue using [TA365169] (MORC2 Antibody) at dilution 1/20, treated with fusion protein. (Original magnification: ×200)