

Product datasheet for **TA365168**

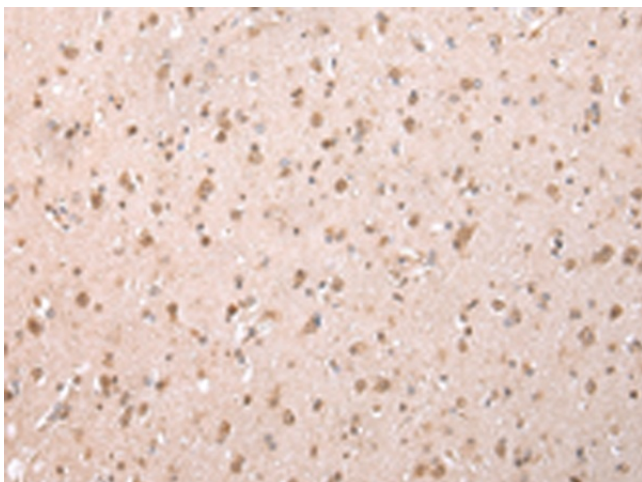
YY1AP1 Rabbit Polyclonal Antibody

Product data:

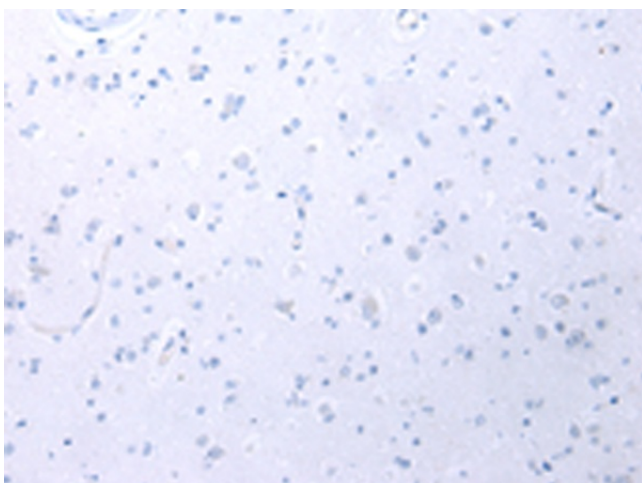
| | |
|-----------------------|---|
| Product Type: | Primary Antibodies |
| Applications: | IHC |
| Recommended Dilution: | IHC: 25-100 Positive control: Human brain Predicted cell location: Cytoplasm and Nucleus |
| Reactivity: | Human |
| Host: | Rabbit |
| Isotype: | IgG |
| Clonality: | Polyclonal |
| Immunogen: | Fusion protein of human YY1AP1 |
| Formulation: | pH7.4 PBS, 0.05% NaN ₃ , 40% Glycerol |
| Concentration: | lot specific |
| Purification: | Antigen affinity purification |
| Conjugation: | Unconjugated |
| Storage: | Store at -20°C. |
| Stability: | 1 year |
| Gene Name: | YY1 associated protein 1 |
| Database Link: | Entrez Gene 55249 Human Q9H869 |
| Background: | The encoded gene product presumably interacts with YY1 protein; however, its exact function is not known. Alternative splicing results in multiple transcript variants encoding different isoforms. |
| Synonyms: | FLJ10875; FLJ13914; HCCA1; HCCA2; OTTHUMP00000033476; OTTHUMP00000200831; YAP; YY1AP |



[View online »](#)

Product images:

Immunohistochemistry of paraffin-embedded Human brain tissue using TA365168 (YY1AP1 Antibody) at dilution 1/20 (Original magnification: ×200)



Immunohistochemistry of paraffin-embedded Human brain tissue using TA365168 (YY1AP1 Antibody) at dilution 1/20, treated with fusion protein. (Original magnification: ×200)