

Product datasheet for **TA365165**

XKR6 Rabbit Polyclonal Antibody

Product data:

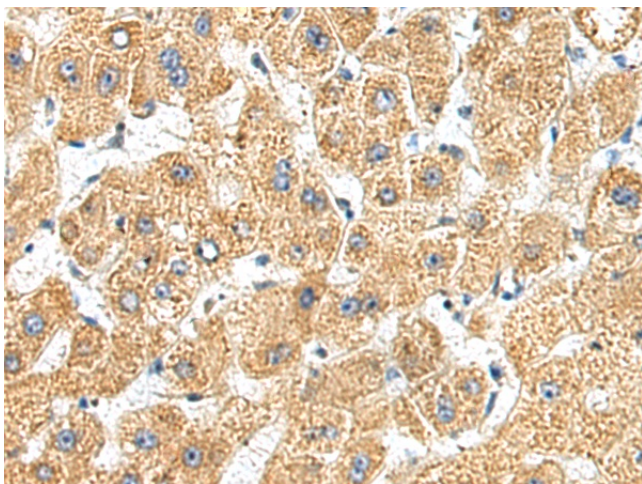
Product Type:	Primary Antibodies
Applications:	IHC
Recommended Dilution:	IHC: 150-300 Positive control: Human liver cancer Predicted cell location: Cytoplasm
Reactivity:	Human, Mouse, Rat
Host:	Rabbit
Isotype:	IgG
Clonality:	Polyclonal
Immunogen:	Fusion protein of human XKR6
Formulation:	pH7.4 PBS, 0.05% NaN ₃ , 40% Glycerol
Concentration:	lot specific
Purification:	Antigen affinity purification
Conjugation:	Unconjugated
Storage:	Store at -20°C.
Stability:	1 year
Gene Name:	XK related 6
Database Link:	Entrez Gene 286046 Human Q5GH73

Background: XK is a 444 amino acid protein that spans the membrane 10 times and carries the ubiquitous antigen, Kx, which determines blood type. The XK (X-linked Kx blood group)-related gene family are homologs of XK. XKR6 (XK-related protein 6) is a 641 amino acid multi-pass membrane protein that likely is a component of the XK/Kell complex of the Kell blood group system. The gene encoding XKR6 maps to human chromosome 8, which is made up of nearly 146 million bases and encodes about 800 genes. There are two isoforms of XKR6 that are produced as a result of alternative splicing events.

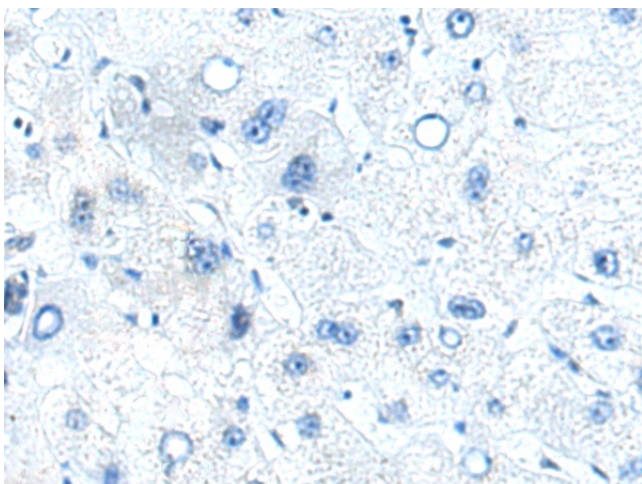
Synonyms: C8orf5; C8orf7; C8orf21; FLJ31557; XRG6



[View online »](#)

Product images:

Immunohistochemistry of paraffin-embedded Human liver cancer tissue using TA365165 (XKR6 Antibody) at dilution 1/160 (Original magnification: ×200)



Immunohistochemistry of paraffin-embedded Human liver cancer tissue using TA365165 (XKR6 Antibody) at dilution 1/160, treated with fusion protein. (Original magnification: ×200)