

Product datasheet for **TA365160S**

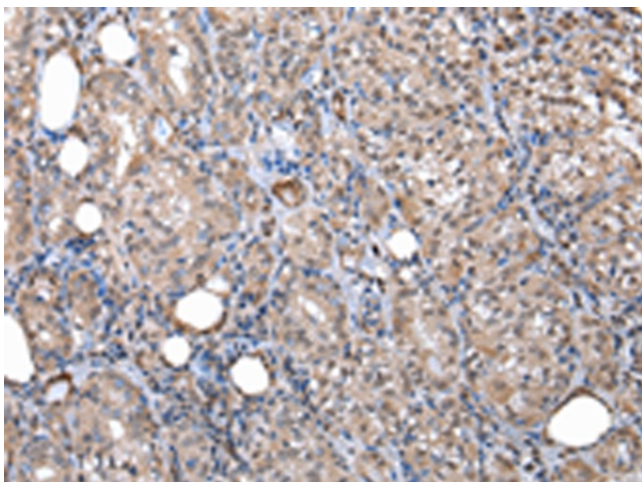
WSB1 Rabbit Polyclonal Antibody

Product data:

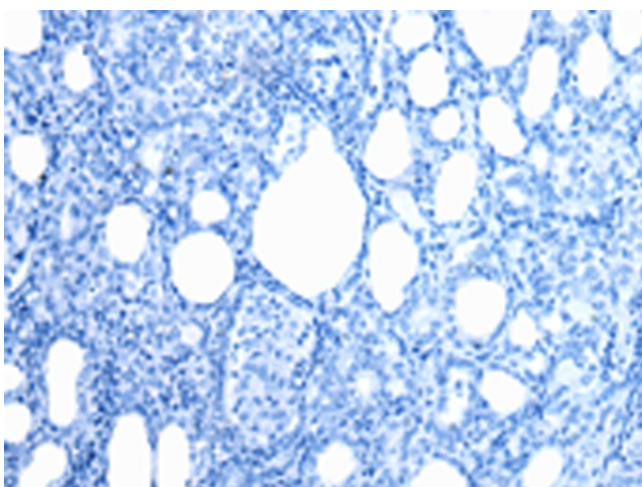
Product Type:	Primary Antibodies
Applications:	IHC
Recommended Dilution:	IHC: 25-100 Positive control: Human thyroid cancer Predicted cell location: Cytoplasm and Nucleus
Reactivity:	Human, Mouse
Host:	Rabbit
Isotype:	IgG
Clonality:	Polyclonal
Immunogen:	Fusion protein of human WSB1
Formulation:	pH7.4 PBS, 0.05% NaN ₃ , 40% Glycerol
Purification:	Antigen affinity purification
Conjugation:	Unconjugated
Storage:	Store at -20°C.
Stability:	1 year
Gene Name:	WD repeat and SOCS box containing 1
Database Link:	Entrez Gene 26118 Human Q9Y6I7
Background:	This gene encodes a member of the WD-protein subfamily. This protein shares a high sequence identity to mouse and chick proteins. It contains several WD-repeats spanning most of the protein and an SOCS box in the C-terminus. Alternatively spliced transcript variants encoding distinct isoforms have been found for this gene.
Synonyms:	DKFZp564A122; DKFZp564B0482; SWIP1; WSB-1



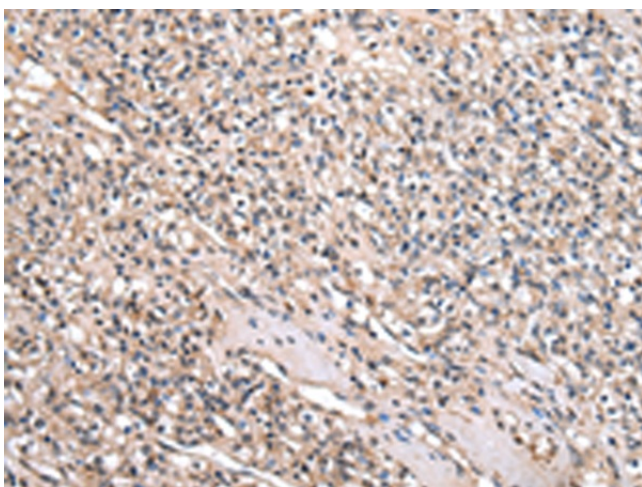
[View online »](#)

Product images:

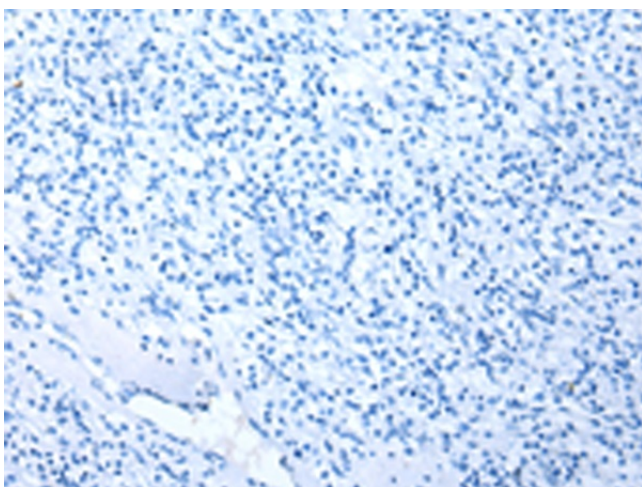
Immunohistochemistry of paraffin-embedded Human thyroid cancer tissue using [TA365160] (WSB1 Antibody) at dilution 1/25 (Original magnification: $\times 200$)



Immunohistochemistry of paraffin-embedded Human thyroid cancer tissue using [TA365160] (WSB1 Antibody) at dilution 1/25, treated with fusion protein. (Original magnification: $\times 200$)



Immunohistochemistry of paraffin-embedded Human prostate cancer tissue using [TA365160] (WSB1 Antibody) at dilution 1/25 (Original magnification: $\times 200$)



Immunohistochemistry of paraffin-embedded Human prostate cancer tissue using [TA365160] (WSB1 Antibody) at dilution 1/25, treated with fusion protein. (Original magnification: $\times 200$)